

Swiftform™

Product Guide

The following document contains important user information with regards to the Swiftform™ Formwork System.



Features & Benefits



Simple.

Swiftform is a simple precast formwork system. Comprising of just 5 simple components, swiftform system includes 150mm, 175mm & 200mm fixed height sideforms, a Titan MAG3 magnet and a universal adaptor plate.



Easier.

The epoxy coated forms all but eliminates concrete sticking, allowing for easy clean up.



Stronger.

Swiftform Sideform is manufactured from ultra lightweight, high-grade 6082 and 6005A Aluminium Alloys which provides durability and strength. It will not bend or buckle and can withstand job site use and abuse.

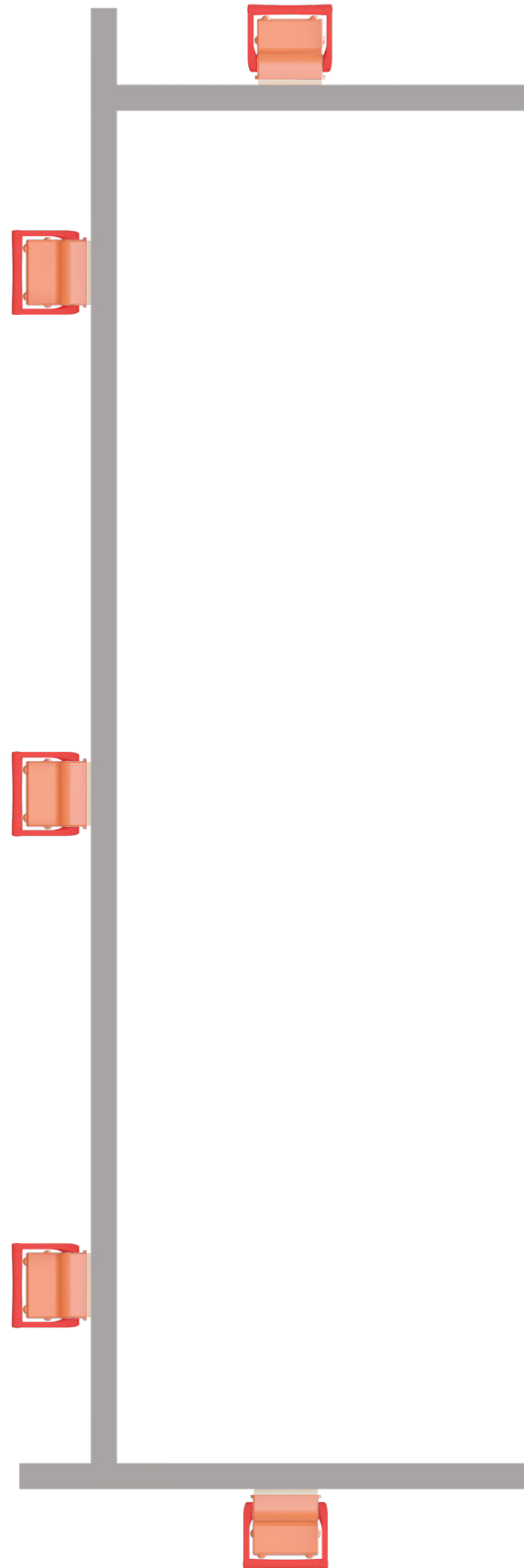
The Titan MAG3 magnet clamp is the industry's most powerful. with industry leading capacity, it means you need to use less magnets when boxing up all the while mitigating your form work from going out of square.



Safer.

The Titan Precast Magnet Clamp's de-magnetising plate safely secures the magnet to prevent it from unexpectedly engaging on the steel bed – minimizing the risk of fingers or other limbs being caught under the magnet.

Swiftform's innovative aluminium design is significantly lighter than traditional steel formwork, improving OH&S and making it much safer to use.



Titan™ III Magnet Clamp

The Titan III patented Precast Magnet is the strongest magnet for its size and is significantly smaller than other commercially available magnets:

Smaller and lighter: Weighs just 4.1kgs

Stronger: Up to 1,800kgs of pull-down force!

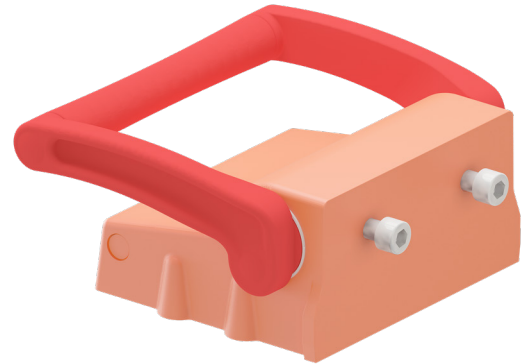
Rubber Base Skirt: Fully seals the underside of the housing to protect against dirt, metal particles and other contaminants. The Rubber Skirt also minimises the possibility of fingers or limbs being caught under the magnet.

De-magnetising Plate: Safely secures the magnet to prevent it from unexpectedly engaging against the steel bed.

Easy to Clean: Concrete does not stick to the magnet's plastic housing, making it quick and easy to clean.

Durable: The 8mm reinforced plastic housing is job site tough!

Reid™ recommends the use of water based release agents.



Part No.	Colour	Dimensions
MAG3	Orange/Red	140mmL x 155mmW x 85mmH

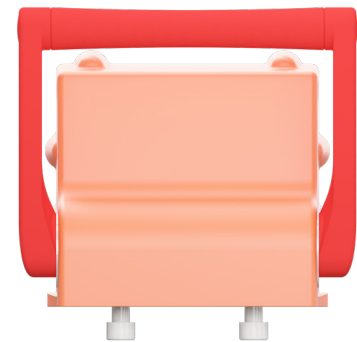
Cleaning

The Titan™ Magnet Clamp housing is made from a glass reinforced plastic which prevents concrete from sticking to it, making it easy to clean.

- The magnet housing can be cleaned by using a dry/damp cloth or a fine plastic bristle brush.
- The underside of the magnet (the magnet pack) should be cleaned of any foreign matter. This will enable the magnet to sit flush on the precast bed and perform to specification.
- **Do not** clean the Titan™ Magnet Clamp using high pressure water cleaners, acids or aggressive detergents.

Storage

When not in use, the Titan™ Magnet and sideform, like any other capital equipment, should be cleaned and stored away under cover to prevent accidental damage. The magnets can be stored on any metal surface such as columns, edges of beds, etc.



Swiftform™ Sideform



Lightweight: Swiftform Sideform is significantly lighter than steel formwork reducing any potential OH&S issues.

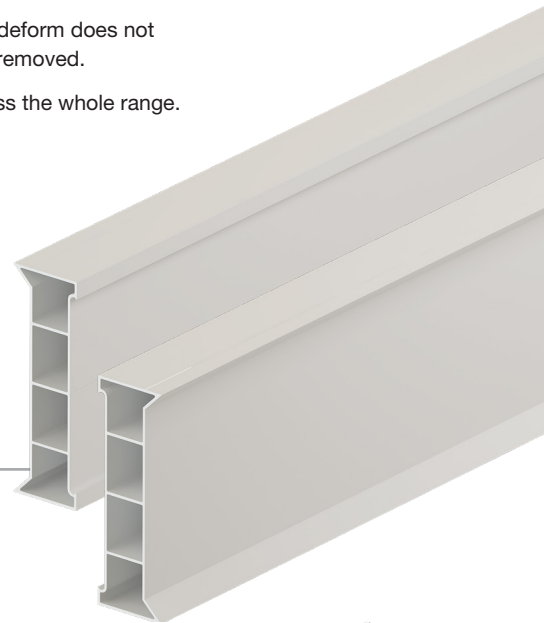
Thick Wall Sections: Sideform will not bend or buckle. Thick wall sections provide for proper screw bite when fixing fittings to the sideform.

Easy to Clean: Epoxy coated Sideform can be easily cleaned and is protected against the elements.

Magnet Securing Rail on the rear of Swiftform Sideform does not allow concrete to become wedged and is easily removed.

A single magnet adaptor plate can be used across the whole range.

Part No.	Dimensions (LxW)	Weight
SWREIDFRM150E	6m x 150mm	16kg
SWREIDFRM175E	6m x 175mm	17.6kg
SWREIDFRM200E	6m x 200mm	19.4kg

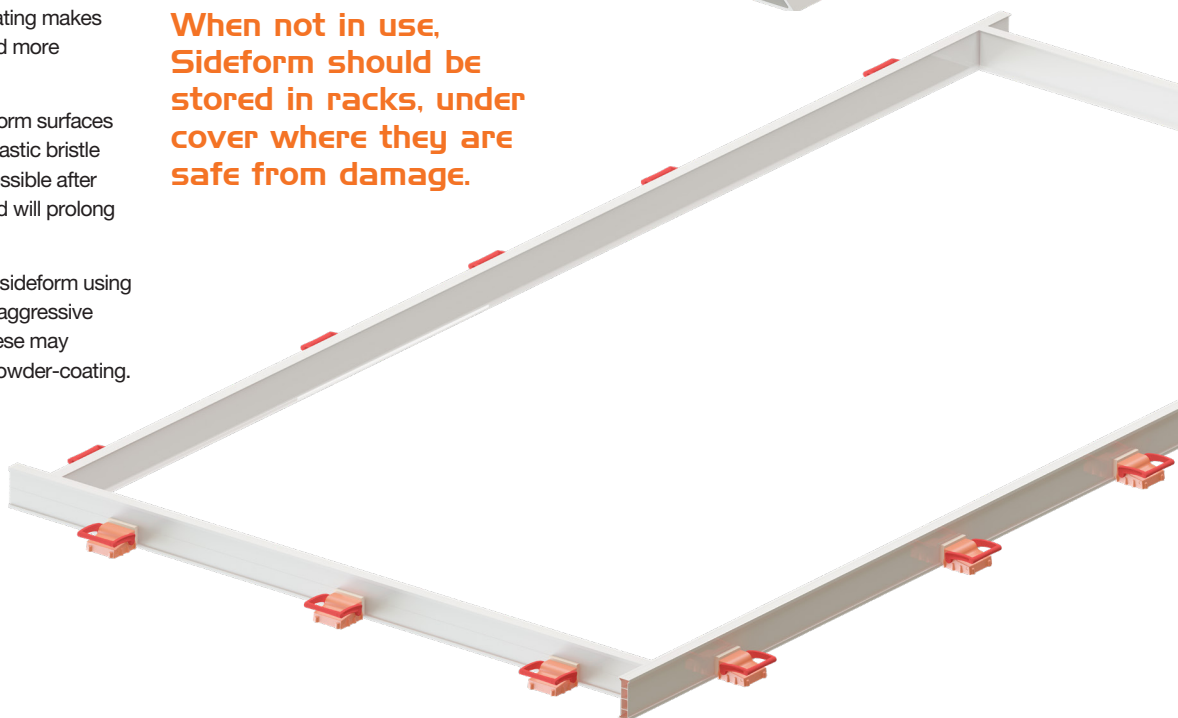


Cleaning

- The unique epoxy powder-coating makes cleaning the sideform easy and more efficient.
- Once stripped, clean the sideform surfaces using a damp cloth or a fine plastic bristle brush. Cleaning as soon as possible after stripping will make it easier and will prolong the life of the epoxy coating.
- It is important not to clean the sideform using high pressure water cleaners, aggressive detergents or chemicals as these may prematurely wear the epoxy powder-coating.

Storage

When not in use, Sideform should be stored in racks, under cover where they are safe from damage.



Swiftform™ Magnet Adapter Plates

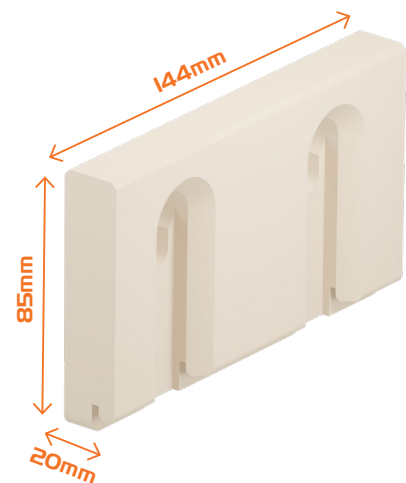


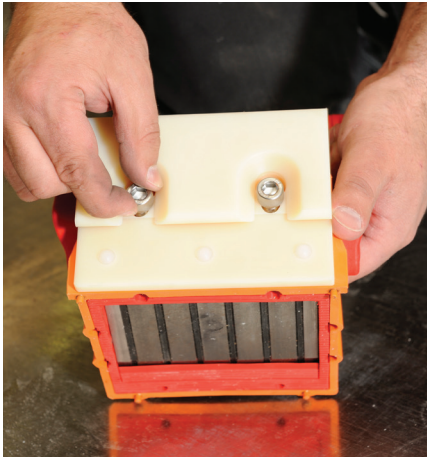
The Swiftform™ Magnet Adaptor plate is a crucial link between the MAG3 magnet and swiftform shutters. It allows the MAG3's superior performance to be used with the swiftform shutters. The single adaptor plate can be used across the whole range of swiftform shutters.

Part No.	Dimensions (LxWxH)
MAPSF	144mm x 20mm x 85mm



Swiftform™ Magnet Adaptor Plate





Preparing the Magnet Clamp

- Each Titan™ Magnet is supplied with 2 hex bolts that are used to secure the adapter plate to the magnet housing.
- Partially install the bolts to the housing (approx 3 turns).
- Slot the adapter plate over the head of the bolts. Pull the adapter plate up until the bottom of the slotted holes are hard up against the bolts.
- Tighten the bolts using an 8mm hex key (5/16"). Ensure that the back of the adapter plate is flush with the front of the magnet housing.
- DO NOT OVER TIGHTEN THE BOLTS.

The Magnet is now ready for use.






Using the Magnet Clamp

Place the Titan™ Magnet behind the sideform at the recommended spacing. Magnet spacing varies depending on the height of the sideform you are using.

Magnets should be spaced as follows:



-  100mm to 170mm high sideform
Magnets should be spaced 1.5m to 1.8m apart
-  170mm to 195mm high sideform
Magnets should be spaced 1.2m to 1.5m apart
-  200mm to 220mm high sideform
Magnets should be spaced 1.0m to 1.2m apart



- Starting from one end of the sideform, tilt the sideform forward (away from the magnet) and seat the male section of the ball lock (located on the front of the adapter plate) into the female recess ball lock rail located on the rear face of the sideform.
- At this stage, the Titan™ Magnet Clamp does not need to be engaged as it has enough initial magnetism to remain in place. If fine adjustment of position is required, the magnet housing or the sideform can be gently tapped with a rubber mallet or by foot.
- It is important not to use hammers or similar devices as both the sideform and magnet can be damaged. Once the first magnet has been positioned, continue along the full length of the sideform until all magnets are correctly located.
- Once all magnets have been positioned, engage each magnet by pushing the handle down towards the pre-cast bed.

customer service

Reid™ New Zealand

Customer Service Centre

Tel: 0800 88 22 12

Email: sales@reidanz.com

Web: www.reids.co.nz

Reid™ Construction Systems (RCS)

AUS: 1 Ramset Drive, Chirnside Park, Victoria, Australia, 3116

NZ: 23-29 Poland Road, Glenfield, Auckland 0632

Information in this document is correct at the time of printing. Readers should contact RCS or consult RCS detailed technical information to ensure product is suitable for intended use prior to purchase.

ITW Australia Pty Ltd ABN 63 004 235 063 trading as RCS

© copyright 2023. ™ Trademarks of Cetram Pty. Ltd. Used under license by RCS

Important Disclaimer: Any engineering information or advice ("Information") provided by RCS in this document is issued in accordance with a prescribed standard, published performance data or design software. It is the responsibility of the user to obtain its own independent engineering (or other) advice to assess the suitability of the Information for its own requirements. To the extent permitted by law, RCS will not be liable to the recipient or any third party for any direct or indirect loss or liability arising out of, or in connection with, the Information. None of the products listed in this document are subject to a warning or ban under the Building Act 2004.

