

BladeHD™ Rackmount

Patch Panel



BLADE HD



splicious . /spliSHæs/

1. having or providing a ridiculously large splicing area and storage in an itty-bitty space

Splicious design for high density

Front and rear entry points

Built-in cable management

72 SC Fiber for every 1U (108 LC)

4U BladeHD WITH 288 SC FIBER. YEAH, YOU READ THAT RIGHT 288 SC FIBER!



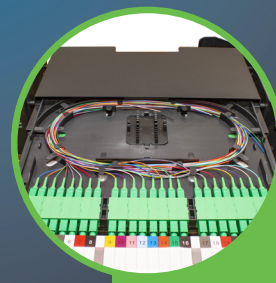
GAME CHANGING!
Front Entry



Rear Entry



Built in waterfalls



Large (splicious)
Splicing Area



Hinged front Cable Management
For easy access to each fiber

Specifications

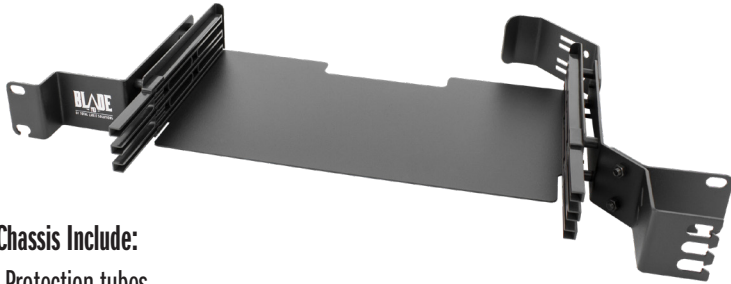
- Supports up to 72 SC fiber per 1U (3 blades/modules/cassettes)
- Frame constructed of 16 AWG steel with electrostatic polyester powder coat black paint
- Fits standard 19" rack
- Storage/Oper. Temperature: -5° C - 60° C
- Humidity: 90% at 30° C
- Built-in cable management
- Dimensions:
1U 1.75" H x 19" W x 10.6" D
4U 7" H x 19" W x 11.5" D

BladeHD Rack Mount Patch Panel

CHASSIS

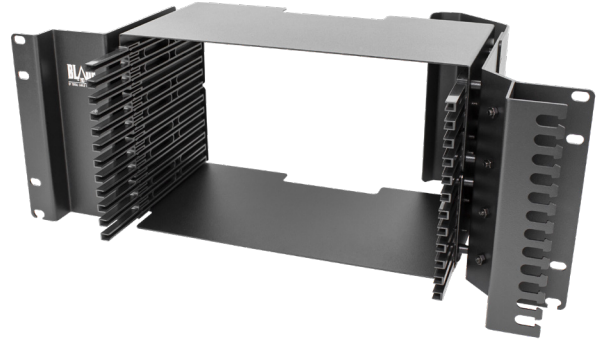
1U BladeHD Rack Mount Patch Panel

FPP-BHD-1U



4U BladeHD Rack Mount Patch Panel

FPP-BHD-4U



Chassis Include:

- Protection tubes
- Cable ties
- Rack mount nuts and bolts

MODULAR CASSETTE DESIGN SCALES EASILY FOR RIDICULOUS SC DENSITY IN A SMALL SPACE!

PASSTHROUGH BLADES/CASSETTES

SC/APC : FPP-BHD-AD-SA1-24

SC/UPC : FPP-BHD-AD-SU1-24

LC/APC : FPP-BHD-AD-LA1-36

LC/UPC : FPP-BHD-AD-LU1-36

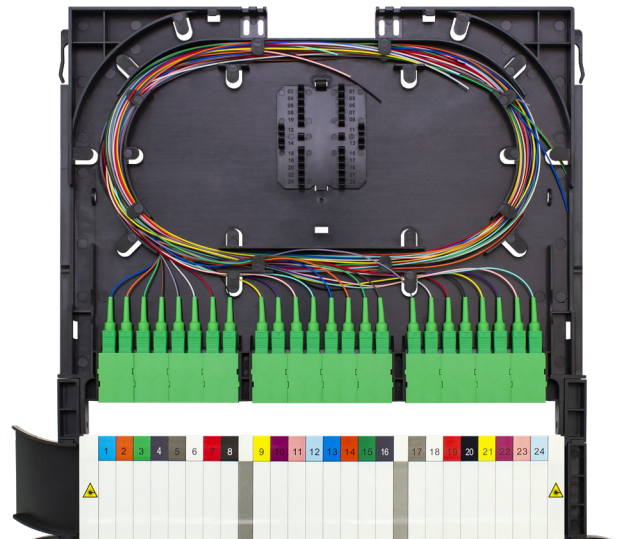
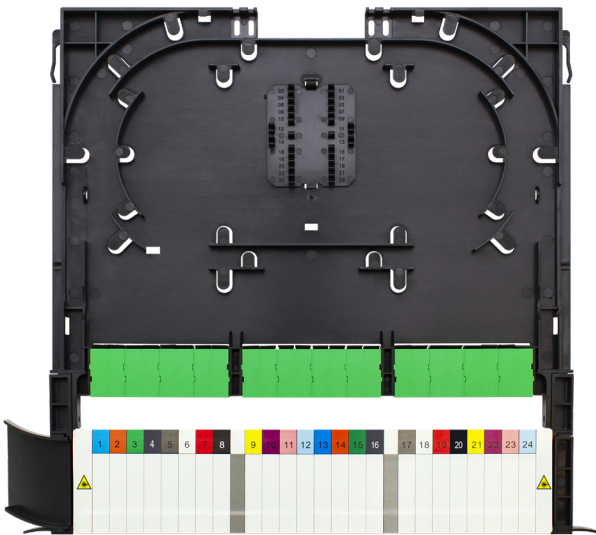
PRELOADED BLADES/CASSETTES

SC/APC : FPP-BHD-PS-SA1-24

SC/UPC : FPP-BHD-PS-SU1-24

LC/APC : FPP-BHD-PS-LA1-36

LC/UPC : FPP-BHD-PS-LU1-36



Blade/Cassettes Include:

- 24 splice sleeves (SC), if ribbon 2
- 36 splice sleeves (LC), if ribbon 3

- Cassette identification labels
- Right waterfall cable management

- Port identification labels
- Left waterfall cable management

Inventory stocked and custom built for your application right here in the U.S.