

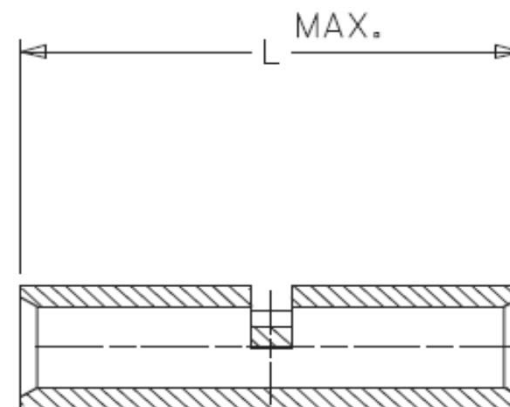
## Bare Butt Connectors

Drawn - SD

Approved - KM

Material - Copper Tube / Tin Plated

Title - Bare Butt Connectors



Part Number	Wire Range	Insulated Color	Electrical Rating Max	L	ID	OD
B22	22-18 AWG	-	105C / 600V	0.472	0.063	0.036
B16	16-14 AWG	-	105C / 600V	0.591	0.091	0.058
B12	12-10 AWG	-	105C / 600V	0.591	0.142	0.217
B8	8 AWG	-	105C / 600V	0.827	0.177	0.146