


DUAL WIRELESS
CHARGE PAD



OPERATING INSTRUCTIONS
PLEASE READ BEFORE OPERATING THIS EQUIPMENT

HALO DUAL WIRELESS CHARGE PAD

Thank you for choosing HALO!

The HALO DUAL WIRELESS CHARGE PAD lets you charge more devices with less! The convenient dual wireless charging pad lets you easily charge two Qi-enabled devices. Charging begins on contact so you'll always have a charger ready with no need to fuss over charging cables. Plus, an extra USB-A port on the back lets you charge a third device!

Please read the operating instructions carefully before using the HALO DUAL WIRELESS CHARGE PAD.

IMPORTANT SAFETY INSTRUCTIONS

SAVE THESE INSTRUCTIONS

WARNING: When using this product, basic precautions should always be followed, including the following:

- Improper use of this product may result in product damage, excess heat, toxic fumes, fire or explosion, for which damages you (“Purchaser”), and not HALO2CLOUD LLC. (HALO) (“Manufacturer”) are responsible.
- Do not store device in high-temperature environment, including heat caused by intense sunlight or other forms of heat. Do not place device in fire or other excessively hot environments. Exposure to fire or temperature above 212°F (100°C) may cause explosion.
- Do not expose the wireless charger to rain or snow.
- Do not use the wireless charger in excess of its output rating. Overloading outputs above rating may result in a risk of fire or injury to persons.
- Do not disassemble this product or attempt to re-purpose or modify it in any manner.
- Do not attempt to replace any part of this device.
- For questions or instructions for the various ways to charge this device, refer to the illustrations in this quick-start guide.
- Use of a power supply or charger not recommended by HALO may result in a risk of fire or injury to persons.
- Use only the supplied AC adapter to power the wireless charging base. The wireless charging base may not work properly when connected to any other AC adapter.
- If this device is accessible to or may be used by a minor, purchasing adult agrees to be solely responsible for providing supervision, instruction, and warnings. Purchaser agrees to defend, indemnify, and hold Manufacturer harmless for any claims or damages arising from unintended use or misuse by a minor.
- All products have gone through a thorough quality assurance inspection. If you find that your device is excessively hot, is emitting odor, is deformed, abraded, cut, or is experiencing or demonstrating an abnormal phenomenon, immediately stop all product use and contact Manufacturer.

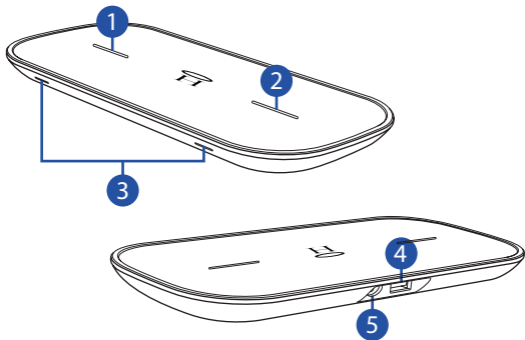
- Switch off the wireless charger when not in use. The wireless charger will automatically switch off when disconnected from its wall charger.
- To disconnect the charging pad from line voltage, pull the AC adapter from the AC outlet.
- The AC outlet shall be installed near the charging pad and shall be easily accessible.
- To comply with FCC RF exposure compliance requirements, the wireless charger must be used with a separation distance of at least 20 cm from all persons.

TABLE OF CONTENTS

Safety Precautions	3-4
Included Items	6
Operating Instructions	7
Specifications	10
Warranty and Contact Information	11

INCLUDED ITEMS

- HALO DUAL WIRELESS CHARGE PAD
- Wall Adapter

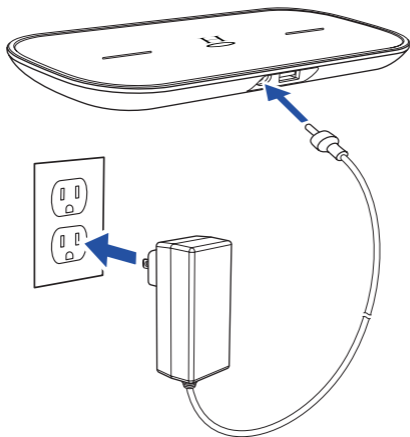


- 1 | Qi Wireless Charging Area #1
- 2 | Qi Wireless Charging Area #2
- 3 | LED Charging Indicators
- 4 | USB Output Port
- 5 | Barrel Input Port

OPERATING INSTRUCTIONS

The HALO Dual Wireless Charge Pad must always be connected to a wall outlet to charge your devices.

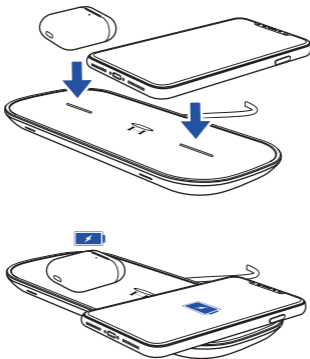
To power up the HALO Dual Wireless Charge Pad, use the provided AC wall adapter. Connect one end of wall adapter to the back of the HALO Dual Wireless Charge Pad. Plug the other end of the adapter into a wall outlet.



The HALO Dual Wireless Charge Pad is ready to charge.

CHARGING AN ELECTRONIC DEVICE USING WIRELESS CHARGING

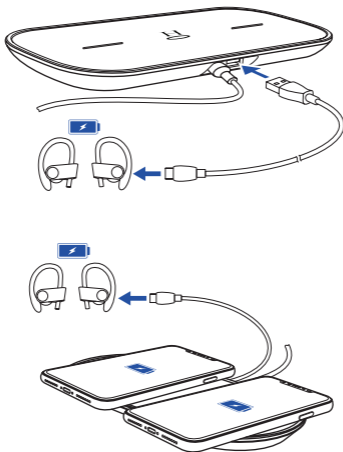
To charge a compatible device, center the device on the charging spot indicated by the line. Charging will begin after a few seconds. The LED charging indicator will illuminate to indicate charging is in progress.



If charging does not begin within 5 seconds, reposition the device until the LED light on the front of the charging spot is illuminated.

CHARGING AN ELECTRONIC DEVICE USING USB OUTPUT PORT

Use the appropriate charging cable that came with your device. Connect one end to the USB port on the back of the HALO Dual Wireless Charge Pad. Connect the other end to your device. Charging will begin immediately.



SPECIFICATIONS

Barrel Input:	19V \approx 1.58A
Qi Wireless Output (x2):	10W max each
USB-A Output:	5V \approx 1A / 5W
Product Dimensions (L x W x H):	3.54 x 7.87 x 0.43 inches
Product Weight:	4.87 oz
Wall Adapter Weight:	5.64 oz

COMPLIANCE WITH FCC REGULATION

This device complies with part 15 of the FCC Rules and RSS-Gen of IC Rules. Operation is subject to the following two conditions: (1) This device may not cause harmful interference, and (2) this device must accept any interference received, including interference that may cause undesired operation.

NOTE: This equipment has been tested and found to comply with the limits for a Class B digital device, pursuant to part 15 of the FCC Rules. These limits are designed to provide reasonable protection against harmful interference in a residential installation. This equipment generates, uses, and can radiate radio frequency energy and, if not installed and used in accordance with the instructions, may cause harmful interference to radio communications. However, there is no guarantee that interference will not occur in a particular installation.

If this equipment does cause harmful interference to radio or television reception, which can be determined by turning the equipment off and on, the user is encouraged to try to correct the interference by one or more of the following measures:

- Reorient or relocate the receiving antenna.
- Increase the separation between the equipment and receiver.
- Connect the equipment into an outlet on a circuit different from that to which the receiver is connected.
- Consult the dealer or an experienced radio/TV technician for help.

CAUTION: To comply with the limits of the Class B digital device,

pursuant to Part 15 of the FCC Rules, this device must be used with certified peripherals and shielded cables. All peripherals must be shielded and grounded. Operation with non-certified peripherals or non-shielded cables may result in interference to radio or reception.

MODIFICATION: Any changes or modifications of this device could void the warranty.

LEGAL

Manufacturer shall not in any way be liable to you or to any third party for any damages you or any third party may suffer as a result of use, intended or unintended, or misuse of this product in conjunction with any device or accessory other than the appropriate device for which this product is designed. Manufacturer will not be responsible for any damages you or any third party may suffer as a result of misuse of this product as outlined above. Purchaser agrees to defend, indemnify, and hold Manufacturer harmless for any claims or damages arising from unintended use or misuse, including use with an unintended device.

LIMITED WARRANTY

HALO2CLOUD LLC. (HALO) warrants its products to be free from defects in material and workmanship under normal use for 90 days.

For all questions about the warranty or exchange requests, please call 888-907-6274, or contact us at <https://www.zagg.com/warranty-policies>.

This Limited Warranty sets forth the full scope of HALO's obligations and liabilities with respect to the product. All implied warranties, including without limitation the implied warranties of merchantability and fitness for a particular purpose, are limited to the duration of this Limited Warranty. In no event shall HALO be liable for any incidental, special, consequential or punitive damages or any damages or losses of or to electronic equipment or products that are used with any of HALO's products.



FOR TECHNICAL SUPPORT PLEASE
CONTACT US AT:

ZAGG.COM/SUPPORT
OR
CALL US AT: **888-907-6274**

HALO
910 W LEGACY CENTER WAY
STE. 500, MIDVALE, UTAH 84047

WWW.ZAGG.COM/HALO

© 2020 ZAGG Inc | www.ZAGG.com/HALO
The HALO and H trademarks are the property of ZAGG Inc.
Qi and the Qi symbol are trademarks of the Wireless Power Consortium.
All rights reserved.
314-00862-A

ZAGG Inc | 910 W Legacy Center Way,
Ste. 500, Midvale, Utah 84047
Made in China.

