



- Creating pathways for data cables to follow within a rack or cabinet is extremely important as it provides a way of routing, organizing and protecting your connections.
- LYNN offers a variety of rack mount, wall mount and cable organizers to put your cables in their place.
- The use of appropriate cable management components prevents the “cable jungle” effect.



202212.04

CBL-MGR-1U-2

- Black 1U rackmount horizontal cable manager
- Finger duct style w/covers
- 2” depth
- Cable capacity (at 50% fill): 24 CAT6 cables, 48-28awg copper or 48 duplex fibers



OPEN ▶



CBL-MGR-1U-24

- Black 1U rackmount horizontal cable manager, finger duct style w/covers, 2” depth front, 4” depth back (reversible)
- Cable capacity (at 50% fill) on front: 24 CAT6 cables, 48-28awg copper or 48 duplex fibers
- Cable capacity (at 50% fill) on back: 48 CAT6 cables, 96-28awg copper or 96 duplex fibers



CBL-MGR-2U

- Black 2U rackmount horizontal cable manager
- Finger duct style w/covers
- 3” depth
- Cable capacity (at 50% fill): 75 CAT6 cables, 150-28awg copper or 150 duplex fibers



- Heavy gauge 1.5 mm metal with flexible, plastic D-rings
- Radius-edged D-rings to protect cable
- Cable capacity (at 50% fill): 24 CAT6 or 48 CAT6 28 AWG cables

PRO-CBL-MGR-1U-5PR



Fits any standard 19 in. rack and cabinet

PRO-CBL-MGR-1UV-4PR



Designed for 48-port angled ProFIT Patch Panel

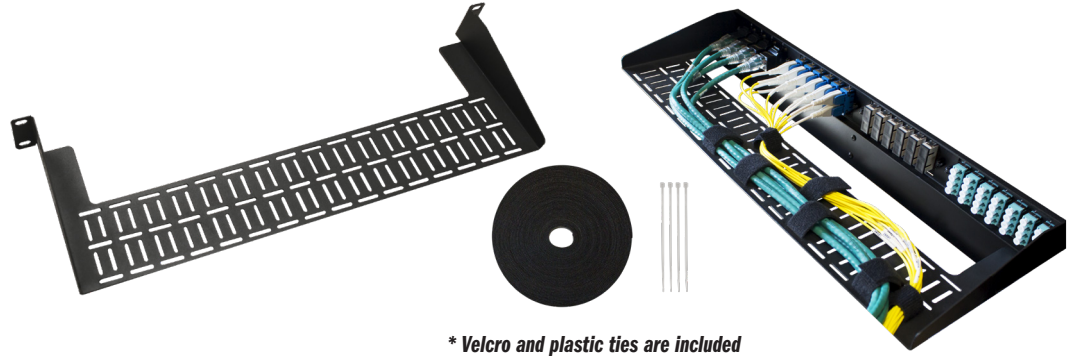
PRO-CBL-MGR-2U-5PR



- Black 2U rackmount horizontal cable manager
- Cable capacity (at 50% fill): 75 CAT6 cables, 150-28 AWG copper or 150 duplex fibers

CBL-MGR-1U-SHELF

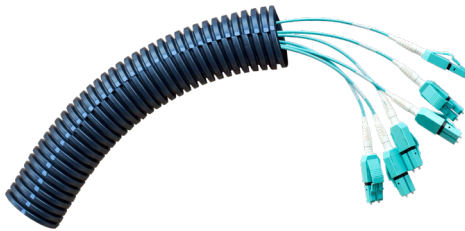
- Sturdy and reliable construction
- Versatile
- 6" depth, 19" width
- Promotes high bend radius
- 1U rackmount cable lacing shelf
- Secures rear cable connections
- Provides multiple velcro lacing positions
- Compatible with all LYNN 1U bulkheads



* Velcro and plastic ties are included

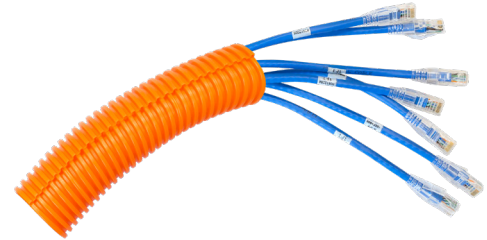
CLT-1F-D2

- Slit innerduct
- 3/4" inner diameter
- Black/vinyl
- Available pre-bundled with cables



CLT-1F-D3

- Slit innerduct
- 1.5" inner diameter
- Orange/plenum
- Available pre-bundled with cables



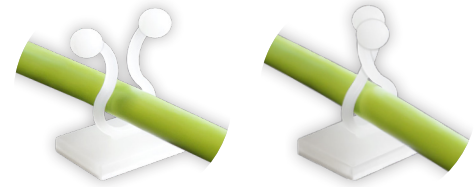
GT. 75X9000

- Black double-sided Velcro
- 75' roll
- 3/4" wide
- Cut-to-length



CBL-MGR-PTT-0.25I

- Plastic twist lock cable standoff
- 1/2" base x 1.28" depth
- Foam backed adhesive
- Place on any flat surface in hard to reach areas



MET-1U-UM

- Universal ring manager
- 3" deep x 1U
- Can be mounted in 8 different positions on any rack
- Cable capacity (at 50% fill): 30 CAT6 cables, 60-28awg copper or 60 duplex fibers



MET-1U-SM

- Side cable managers for patch panels
- 1U high x 2" wide x 3" deep
- Fits in 24" or wider cabinets
- Plastic D-rings support and secure side entry of patch cables
- Saves RU space by eliminating the need for horizontal cable managers
- Compatible with all LYNN enclosures/bulkheads



D-Rings

- Wallmount
- Die cast aluminum
- Supports easy cable pulling
- Rounded edges protect cables

DSTR-2: 2"



DSTR-3: 3"



DSTR-5: 5"



DID YOU KNOW?



Fiber Cleaners

A clean cable is a working cable!



FOC-LC-OC



FOC-SC-OC



FOC-MPO-P