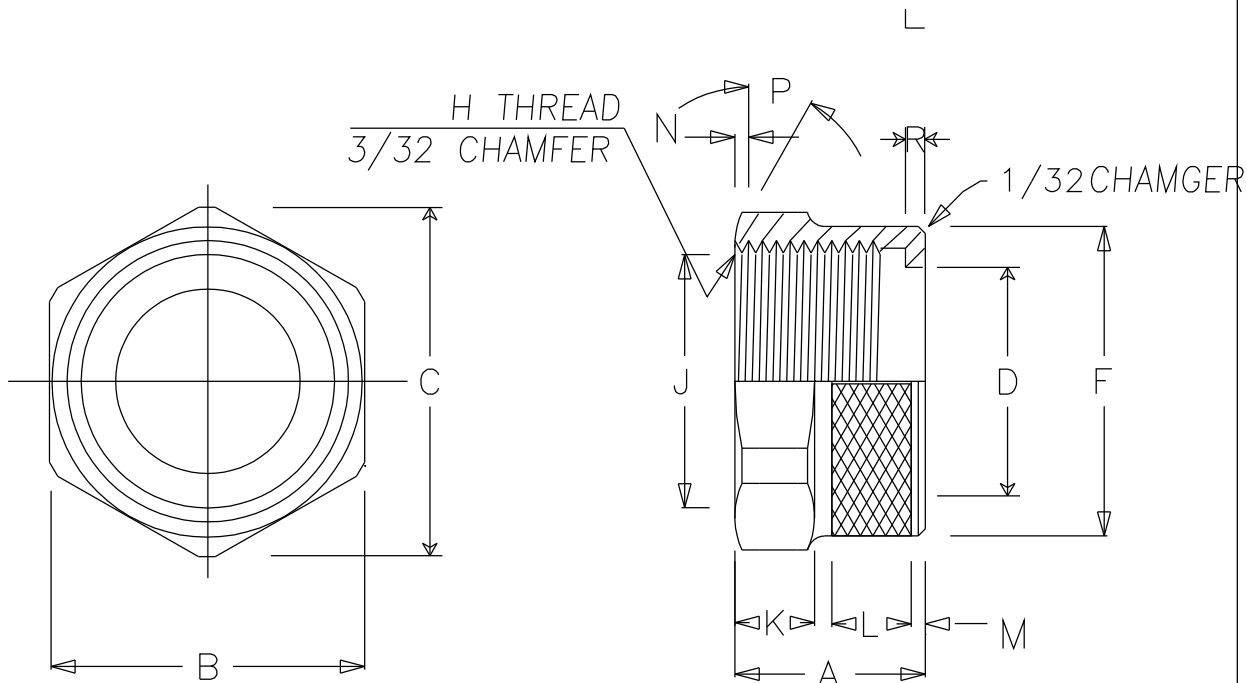


NO SHARP CORNERS - PARTICULARLY AT BORE D  
 ALL CHAMFERS ARE 45 DEGREES  
 TOLERANCES +/- .005 INCH +/- ONE DEGREE  
 KNURL = 20 PITCH, 90 DEGREE, 41 TOOTH

DIMENSIONS

A	0.940 *
B HEX	1.562
C DIA.	1.715
D BORE	1.130 *
F DIA.	1.562
H THREAD	1 3/8-16 *
J BORE	1.310 *
K	0.375
L	0.375
M	0.062
N	0.062
P	30 DEGREES
R	0.098

\* INDICATES CRITICAL INSPECTION DIMENSIONS



QUARTER SECTION

NOTE: BORE J MUST BE MAINTAINED (AFTER  
 THREADING) COMPLETELY TO SHOULDER

REV C 4-07-93 REDRAWN USING CADD  
 REV D 3-7-03 "A" DIM. .940 WAS .937

**REMKE INDUSTRIES**  
 Wheeling, Illinois 60090

SCALE: APPROX. FULL  
 MATERIAL: 6262T6511  
 FINISH: NATURAL  
 PART NAME: NUT  
 PART NUMBER: RSR-300-ND2  
 DRAWING DATE: 850508