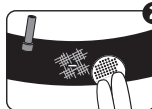


# HOW TO USE

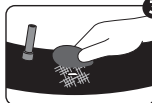
## HOW TO REPAIR A BIKE TUBE



- 1** Deflate tube and use levers to remove tube from tire and wheel.



- 2** Scuff tube hole area, wipe clean and dry.



- 3** Peel off back of patch, stick patch over hole and press hard to smooth out wrinkles.\*



- 4** Reassemble tire.

**\*NOTE:** Patch will stick and remain on the tube when the tube is **CLEAN** and **DRY**. Check the patch is smooth with **NO** wrinkles after it is applied to the tube.

## HOW TO INFLATE A BIKE TIRE



- 1** Twist CO<sub>2</sub> Inflator on the CO<sub>2</sub> Cartridge until secured.

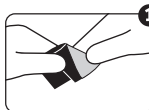


- 2** Press CO<sub>2</sub> Inflator onto valve stem and untwist the CO<sub>2</sub> Cartridge to inflate tire.

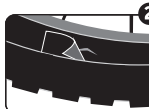


- 3** Retwist CO<sub>2</sub> Cartridge to stop inflation.

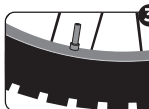
## HOW TO PROTECT A BIKE TUBE



- 1** Peel off back of Tire Shield.



- 2** Press the Tire Shield to the tire gash or tear inside the tire.



- 3** Insert tube into tire so the Tire Shield is between the tire and tube.

SEE INSTALL



ITW GLOBAL TIRE REPAIR

125 Venture Drive, Suite 210,  
San Luis Obispo, CA 93401 USA

[WWW.SLIME.COM](http://WWW.SLIME.COM)

PART# 20495

REV102721ART