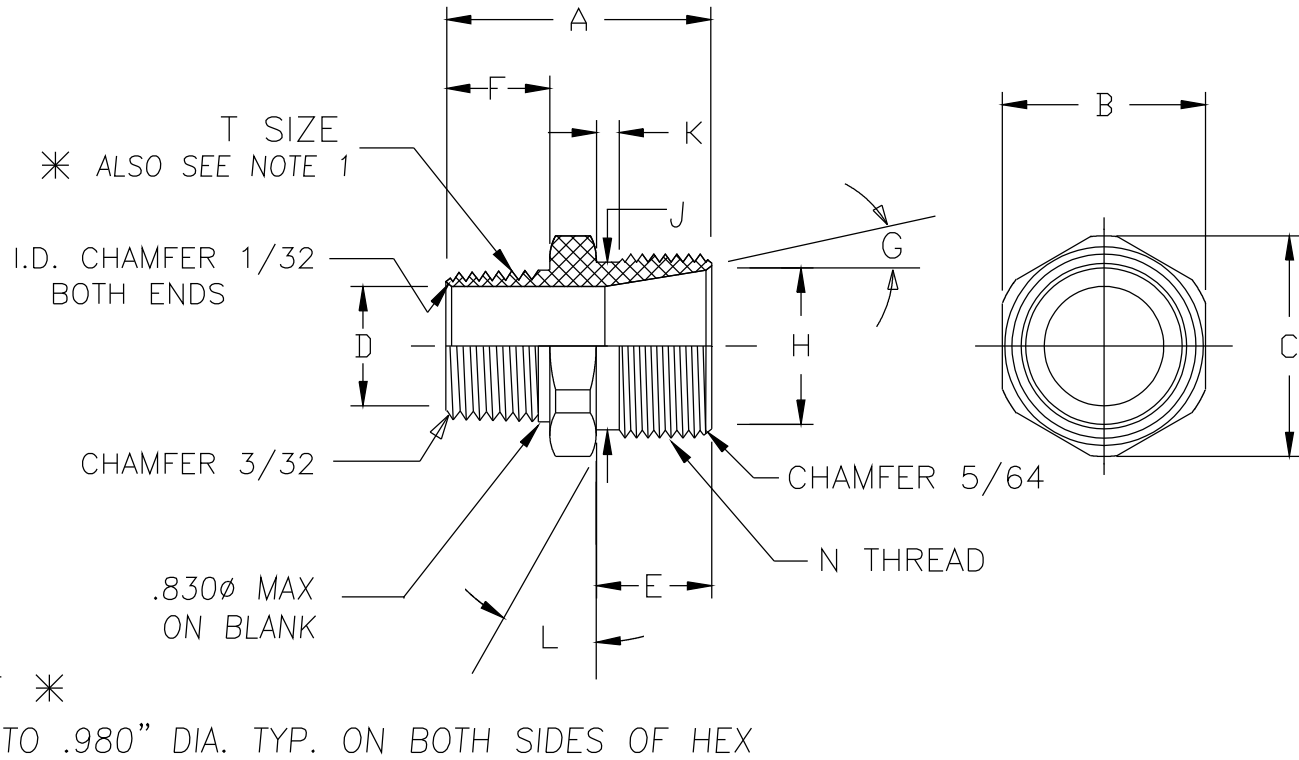


DIMENSIONS

A	1.30
B HEX	1.00"
C DIA.	1.09
D BORE	0.61
E	0.56 *
F	0.56
G	12 DEG. *
H DIA.	0.791*
J DIA.	0.900
K	.150 MAX
N	1"-16 *
T	1/2"-14 NPT *
L	30° CHAMFER TO .980" DIA. TYP. ON BOTH SIDES OF HEX



NOTES:

* 1.) MACHINE FULL NPT THREAD WITHIN .050" OF BOTTOM SIDE OF HEX.

REMKE INDUSTRIES

Wheeling, Illinois 60090

SCALE: APPROX FULL

MATERIAL: 6262T6511

FINISH: NATURAL

PART NAME: BODY

PART NUMBER: RSR-100-B

DRAWING DATE: 831003

REV.	DATE	CHANGE	
A	4/6/95	CHANGE J DIM TO .900	UNLESS OTHERWISE SPECIFIED 3-PLC. DIM. +/- .005 2-PLC. DIM. +/- .010 1-PLC. DIM. +/- .015 FRACTIONAL +/- 1/64 ANGULAR +/- 1/2°
B	4/25/95	CHANGE D DIM TO 0.617	
C	1/6/98	ADD TOLERANCE CHART	
D	3/6/98	CHANGE TO MACHINED BAR STOCK	
E	1/12/00	CHANGE DIM H TO .79	