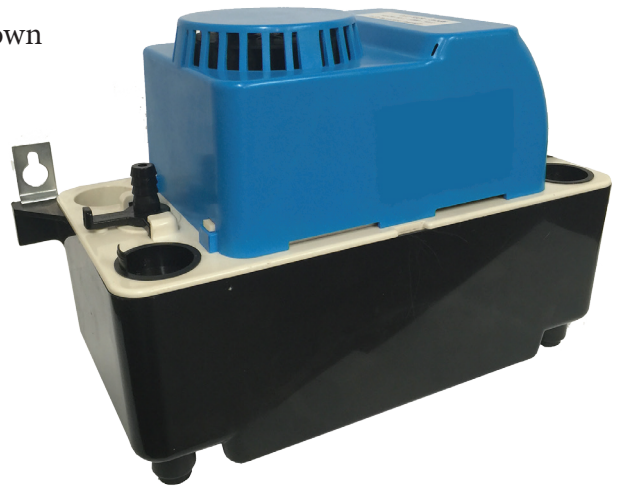


SPCP SERIES CONDENSATE PUMP

High quality pump designed to remove condensate from AC systems, condensing furnaces and boilers, ice machines, drinking fountains and coolers. These pumps incorporate an overflow switch that can be used to shut-down the system and an audible alarm.

Features / Benefits

- 22 foot of standard lift @ 10 gph
- Independent N.C. safety switch & motor switch shuts down AC system to prevent overflow
- Suitable for acidic condensate
- ¼" Quick connect terminals
- 3 terminals are provided for easy connection
- Independent N.O. audible alarm switch rated @ 80dB
- Specially designed leak free motor & safety float
- 3/8" rubber ball check valve
- Vibration absorbing feet
- Metal side mount tabs, 11-1/2" on center between tabs
- 3 inlet holes
- 6' power cord included
- Audible Alarm



Specifications

| | SPCP115 | SPCP230 |
|----------------------------|----------------------|----------------------|
| Motor Horsepower (hp) | 1/10 | 1/10 |
| Voltage (VAC) | 120 | 208/240 |
| UL® Listed | Yes | No |
| Power (W) | 80 | 75 |
| Current (A) | 1.45 | 0.72 |
| Frequency (Hz) | 60 | 50/60 |
| Motor Overload Protector | Yes | Yes |
| Whole Pump Height (inches) | 7 ¼ | 7 ¼ |
| Whole Pump Length (inches) | 11¼ | 11¼ |
| Whole Pump Width (inches) | 5 | 5 |
| Tank Size | 1/2 Gal. | 1/2 Gal. |
| Discharge | 3/8" Barb | 3/8" Barb |
| Tank Material | ABS | ABS |
| Impeller material | Glassfiber filled PP | Glassfiber filled PP |
| Float Material | Polypropylene | Polypropylene |
| Shaft Material | S.S.304 | S.S.304 |
| Max. Temp. (°F) | 110 | 110 |
| Alarm (dB) | 80 | 80 |
| Auto Off with dry contacts | Yes | Yes |
| Float Activated | Yes | Yes |

Flow Rate Capacity

| Lift (Feet) | 1 | 5 | 10 | 15 | 20 | 22 | 24 |
|-------------|----|----|----|----|----|----|----|
| GPH* | 99 | 87 | 69 | 48 | 20 | 10 | 0 |

* Flow rate is for 60 Hz. 50 Hz will be approximately 15% less.

Sequence of Operation

1. Pump motor is activated when more than 2-1/4" of water collects in tank.
2. Pump motor is off when less than 1-1/4" of water collects in tank.
3. Pump alarm on safety switch opens when more than 2-3/4" of water collects in tank.
4. Each pump cycle drives ¼ gallon of water out of the tank.