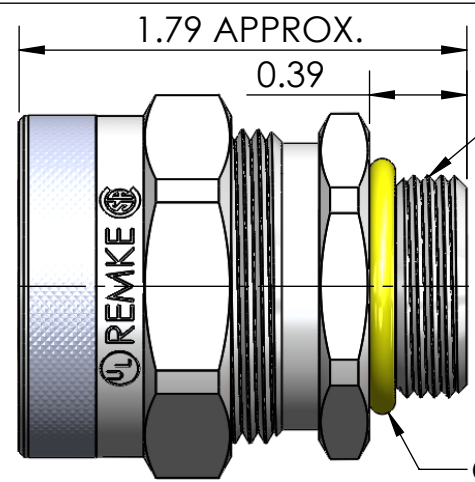


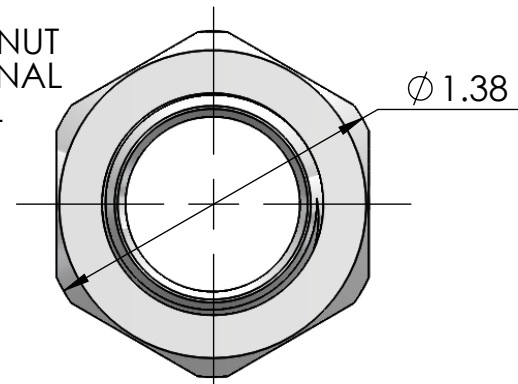
NUT



O-RING
OPTIONAL
ADD: R

PG-16

LOCK NUT
OPTIONAL
ADD: L



BODY



ITEM NO.	PART NUMBER	DESCRIPTION	MATERIAL	QTY.
1	RPG-16200-B	BODY	ALUMINUM	1
2	SRB-203 THRU SRB-213	BUSHING	NEOPRENE	1
3	SW-200	WASHER	C.R.S. ZINC PLATED	1
4	RSR-200-N	NUT	ALUMINUM	1
5	SOR-1-VNT	O-RING	BUNA-N	1
6	RLP16-BR	LOCK NUT	BRASS, NICKLE PLATED	1

PART NUMBER	SEALING RANGE	BODY BORE
RPG-16203	.125 - .188	.700
RPG-16204	.188 - .250	.700
RPG-16205	.250 - .312	.700
RPG-16206	.312 - .375	.700
RPG-16207	.375 - .437	.700
RPG-16208	.438 - .500	.700
RPG-16209	.500 - .562	.700
RPG-16210	.500 - .625	.700
RPG-16211	.562 - .688	.700
RPG-16212	.625 - .750	.700
RPG-16213	.688 - .812	.700

REV.	DATE	CHANGE	UNLESS OTHERWISE SPECIFIED:	NAME	DATE	REMKE REMKE INDUSTRIES 310 CHADDICK DR, WHEELING, IL. 60090	
A	6/10/13	DRAWING RELEASED	DIMENSIONS ARE IN INCHES TOLERANCES: FRACTIONAL ± 1/64 ANGULAR: MACH ± 1° BEND ± 1° ONE PLACE DECIMAL ± .015 TWO PLACE DECIMAL ± .010 THREE PLACE DECIMAL ± .005 INTERPRET GEOMETRIC TOLERANCING PER: MATERIAL ALUMINUM FINISH	DRAWN JCN CHECKED ENG APPR. MFG APPR. Q.A.	6/13	TITLE: RPG-16200 SERIES	
			DO NOT SCALE DRAWING	PROPRIETARY AND CONFIDENTIAL THE INFORMATION CONTAINED IN THIS DRAWING IS THE SOLE PROPERTY OF REMKE INDUSTRIES. ANY REPRODUCTION IN PART OR AS A WHOLE WITHOUT THE WRITTEN PERMISSION OF REMKE INDUSTRIES IS PROHIBITED.		SIZE A DWG. NO. RPG-16200 ASSEMBLY	SCALE: 1.3:1 SHEET 1 OF 1

A

5

4

3

2

1