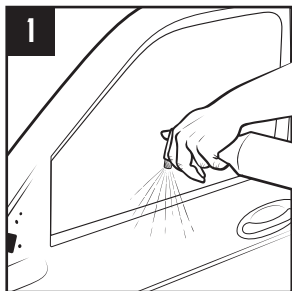
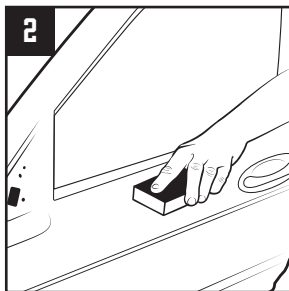


3 + 1 HIGH BUILD PRIMER SURFACER

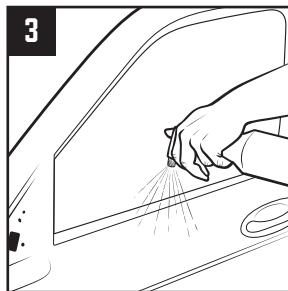
SURFACE PREPARATION – METAL, ALUMINUM, FIBERGLASS, AND SMC



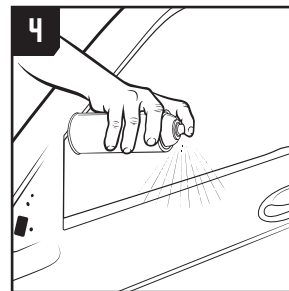
1
Clean the surface with isopropyl alcohol.



2
Sand with P180-320 sandpaper.



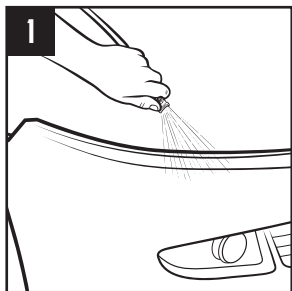
3
Blow off and re-clean with isopropyl alcohol.



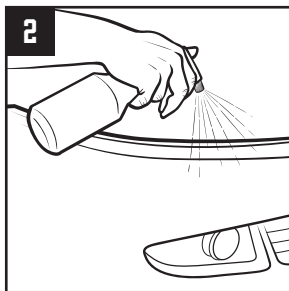
4
Apply 3-in-1 High Build Primer Surfer.

Note: For fiberglass and SMC do not oversaturate exposed fibers with isopropyl alcohol.

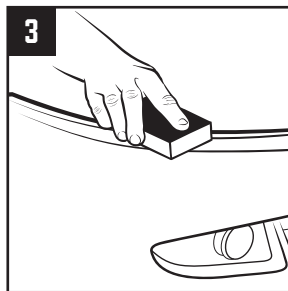
SURFACE PREPARATION – RAW PLASTIC



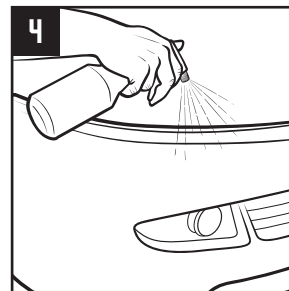
1
Clean the surface with soap and water. Dry thoroughly.



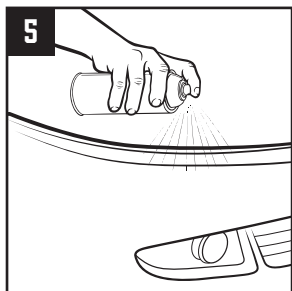
2
Clean the surface with isopropyl alcohol.



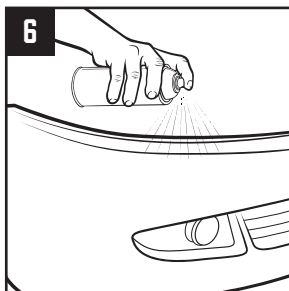
3
Sand with P240-320 sandpaper.



4
Blow off and re-clean with isopropyl alcohol.

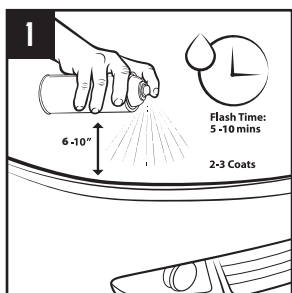


5
Apply Seymour Adhesion Promoter.

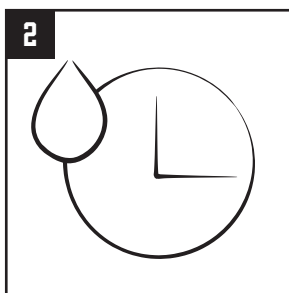


6
Apply 3-in-1 High Build Primer Surfer.

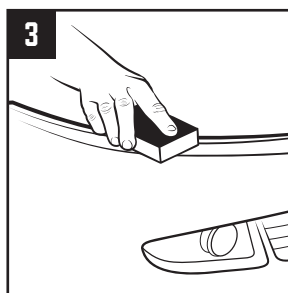
APPLICATION INSTRUCTIONS



1
Apply 2-3 coats at a distance of 6-10". Allow 5-10 minutes flash between coats.



2
Allow to dry for at least 60 minutes before sanding.



3
Sand with P320-400 sandpaper.
Can be top coated with most refinish materials.