

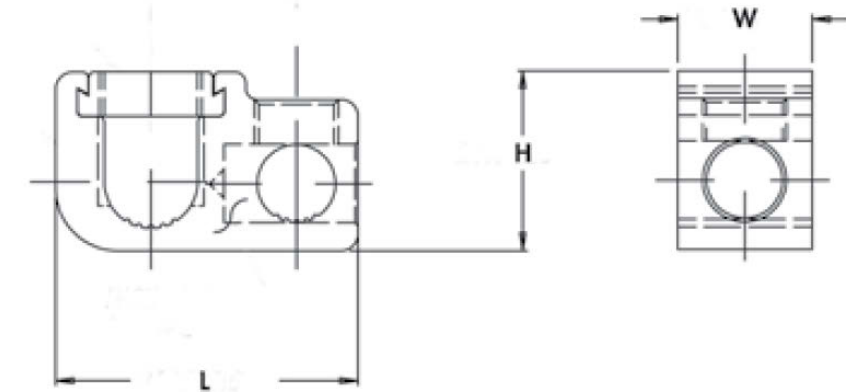
FEATURES:

1. Excellent for tapping of main conductor due to lay-in feature.
2. Perpendicular tap allows for parallel or "T" tap configuration.
3. Flexible cover allows for either parallel or "T" tap wire entry.
4. Secure snap cover eliminates need for taping.
5. • Electro-finish plated for low contact resistance.



PROGRAM:	SOLIDWORKS
UPDATED:	10/2024
SALES REV:	A
SIZE:	B (11x17)

MECHANICAL CONNECTORS: GP, GC - SERIES ALUMINUM, DUAL RATED, T-TAP CONNECTOR & COVERS



CAT. NO.	FIG. NO.	STYLE	COLOR CODE	MAIN (RUN) WIRE RANGE	TAP WIRE RANGE	MAX TORQUE VALUE (IN./LBS.)	HEX WRENCH SIZE (IN.)	HEX WRENCH SIZE (IN.)	LENGTH (L) (IN.)	WIDTH (W) (IN.)	HEIGHT (H) (IN.)	STD. CTN. QTY.
GP-2	1	Parallel "T" Tap	-	2-12 STR	4-14 STR	50	Slotted	●	1.390	0.630	0.880	25
GP-0	1	Parallel "T" Tap	-	1/0-2 AWG	1/0-14 AWG	120	0.187	●	1.750	0.750	1.000	12
GP-250-0	1	Parallel "T" Tap	-	250 MCM-1/0 AWG	1/0-14 AWG	275,120	0.187, 0.312	●	2.030	1.060	1.310	12
GP-250	1	Parallel "T" Tap	-	250 MCM-1/0 AWG	250 MCM-6 AWG	275	0.312	●	2.280	1.060	1.310	12
GP-350	1	Parallel "T" Tap	-	350 MCM-4/0 AWG	350 MCM-6 AWG	275	0.312	●	2.560	1.250	1.440	6
GP-500	1	Parallel "T" Tap	-	500-350 MCM	500-2 MCM	375	0.375	●	3.130	1.380	1.750	6
GP-750	1	Parallel "T" Tap	-	750-500 MCM	500-2 MCM	375	0.375	●	3.380	1.500	2.000	3
GC-2	2	Insulated Cover	Yellow	-	-	-	-	-	2.250	1.370	1.110	12
GC-0	2	Insulated Cover	Grey	-	-	-	-	-	2.610	2.170	1.260	6
GC-250	2	Insulated Cover	Red	-	-	-	-	-	3.440	3.180	1.630	3
GC-350	2	Insulated Cover	Yellow	-	-	-	-	-	3.760	3.290	1.760	3
GC-500	2	Insulated Cover	Blue	-	-	-	-	-	4.890	3.340	2.120	3
GC-750	2	Insulated Cover	Orange	-	-	-	-	-	4.550	3.450	2.340	3
GP-2WC	3	Parallel "T" Tap with Cover	Yellow	2-12 STR	4-14 STR	50	Slotted	●	2.250	1.370	1.110	12
GP-0WC	3	Parallel "T" Tap with Cover	Gray	1/0-2 AWG	1/0-14 AWG	120	0.187	●	2.610	2.170	1.260	10
GP-250-0WC	3	Parallel "T" Tap with Cover	Red	250 MCM-1/0 AWG	1/0-14 AWG	120, 275	0.187, 0.312	●	3.440	3.180	1.630	5
GP-250WC	3	Parallel "T" Tap with Cover	Red	250 MCM-1/0 AWG	250 MCM-6 AWG	275	0.312	●	3.440	3.180	1.630	5
GP-350WC	3	Parallel "T" Tap with Cover	Yellow	350 MCM-4/0 AWG	350 MCM-6 AWG	275	0.312	●	3.760	3.290	1.760	6
GP-500WC	3	Parallel "T" Tap with Cover	Blue	500-350 MCM	500-2 MCM	375	0.375	●	4.890	3.340	2.120	2
GP-750WC	3	Parallel "T" Tap with Cover	Orange	750-500 MCM	500-2 MCM	375	0.375	●	4.550	3.450	2.340	2

SPECIFICATIONS:

- UL Listed/cULus Listed for Wire Connector E155274.
- UL486A/B Listed. AL9CU
- CSA 701642.
- Temperature Rating: 90 °C.
- Voltage: 600V.

