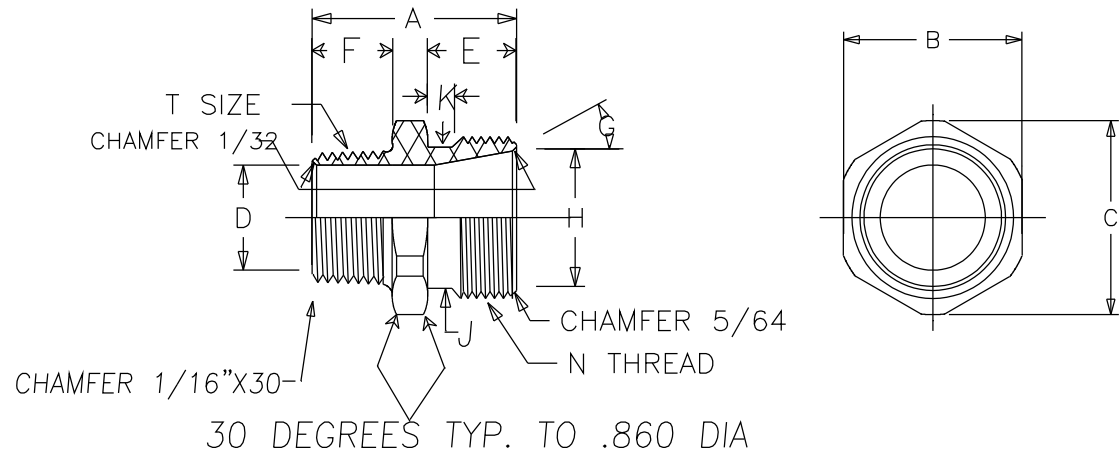


DIMENSIONS

A	1.04 *
B HEX	0.87
C DIA.	0.97
D BORE	0.47 *
E	0.44
F	0.44
G	12 DEGREES
H DIA.	0.59
J DIA>	0.63
K	0.110 MAX
L	
M	
N	3/4-20 UNEF-2A *
T	3/8"NPT *



REV.	DATE	CHANGE
B	2/9/93	REDRAWN USING CADD 6
C	1/17/97	SQUARE DIM J
D	6-9-98	CHANGE DIM G TO 12 DEGREES

UNLESS OTHERWISE SPECIFIED  
 3-PLC. DIM. +/- .005  
 2-PLC. DIM. +/- .010  
 1-PLC. DIM. +/- .015  
 FRACTIONAL +/- 1/64  
 ANGULAR +/- °1

**REMKE INDUSTRIES**

Wheeling, Illinois 60090

SCALE: APPROX FULL

MATERIAL: 6262T6511

FINISH: NATURAL

PART NAME: BODY

PART NUMBER: RSR-000-B

DRAWING DATE: 810714