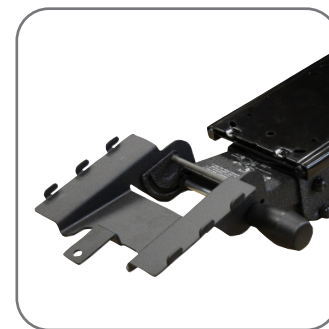
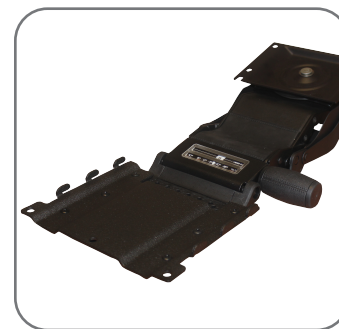


Myriad™ Articulating Arms



	FSS22 FastAction Sit/Stand	FP21 FastAction Precision	CFP17 Compact FastAction	TLF Trackless FastAction	VS17 Value Swivel
Height Adjustment: Type:	Dial tilt height adjustment provides greater ADA compliance	No knob or lever needed for height adjustment	No knob or lever needed for height adjustment	Soft touch knob dial tilt with +10° to -15° tilt angles	Single knob adjusts height and tilt
Height Adjustment Range:	14"	8"	5-7/8"	5-3/4"	5-1/2"
Tilt Adjustment:	-15°/+10° tilt adjustment with positive tilt lockout option	-15°/+10° tilt adjustment (positive lockout available)	-20°/+0° tilt adjustment (+10° with positive lockout tab removed)	+10° / -15° tilt adjustment	-15°/+10° tilt adjustment
Rear Swivel:	360° rear swivel	360° rear swivel	360° rear swivel	360° rear swivel	360° rear swivel
Mounting Clearance:	22" or deeper	21" or deeper	17" or deeper	17.5" or deeper for folding action	18" or deeper
Glide Track:	22" precise glide track	21" precise glide track	17" precise glide track	Direct mount, no track required	17" nylon glide track
Features:	Increased height range from +8.25/-5.88"	Low profile design maximizes knee space, height and tilt gauge, extends 1-1/2" above worksurface	Rises 1-7/8" below worksurface	Easy height adjustment, providing superior lock up and stability with infinite adjustment	Spring assist for tilt and height adjustment
Recyclability:	Designed for disassembly and 100% recyclability	Designed for disassembly and 100% recyclability	Designed for disassembly and 100% recyclability	Designed for disassembly and 100% recyclability	Designed for disassembly and 100% recyclability