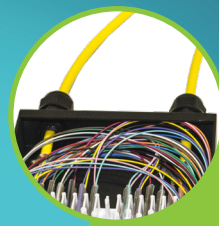
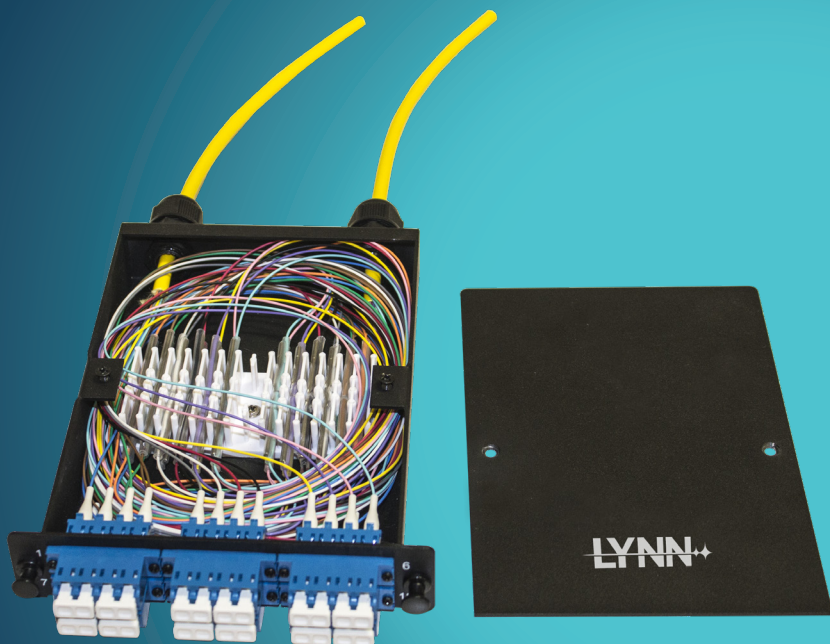




FEATURES



2 Entry Points - Allows for use as splice only or patch and splice cassette



Screw-down Splice Chip - prevents chip from moving around or becoming dislodged with heat or movement



Compression Fittings - provides a secure fit and significant strain relief



Internal Shutters Available - Help prevent contaminants, extending life of fiber backbone and cassettes

AVAILABLE
FULLY LOADED
FROM LYNN TODAY!

More Features

- Fits most LGX enclosures
- Internal shutters available
- Port numbering screen printed on both sides
- Easy entry with 2 phillips head screws

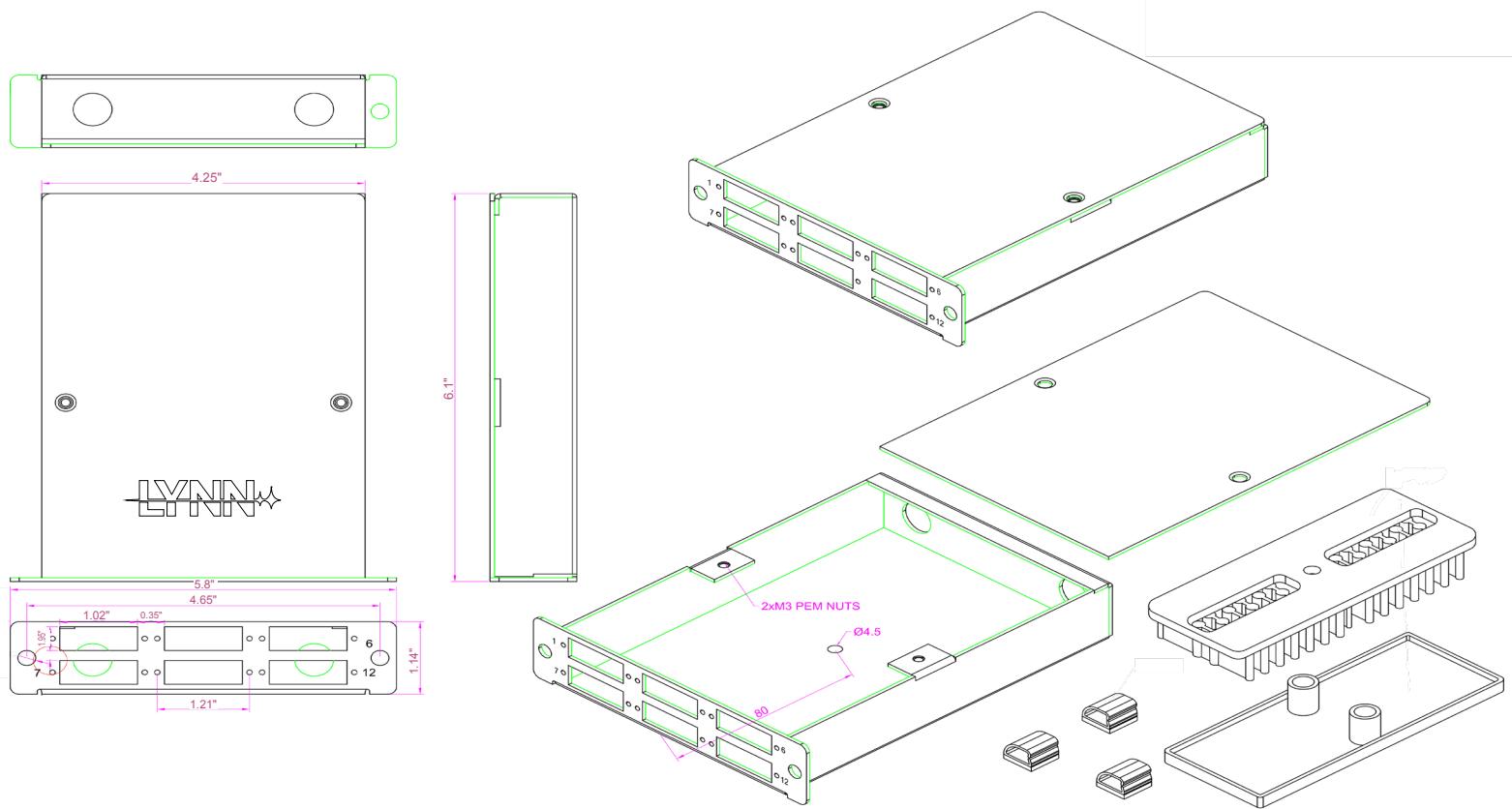
FIBER Specifications (If Loaded)

- Fiber Types: BIF- Bend Insensitive Fiber (High Bend Radius)
 - > Plus Corning 62.5/125
 - > Corning Clearcurve 50/125 OM3
 - > Corning Clearcurve 50/125 OM4
 - > Corning Clearcurve SMF-28eXB (G.657.A1)
- Batch testing by Dorc Machine
- Customization: Length, packaging, bar coding, labeling, stocking programs, color and style of cable

Specifications

- Dimensions: 5.8" W x 1.14" H x 6.1" D
- Material: 16AWG Steel
- Coating: Electrostatic polyester powder coat BLACK paint

Performance Specifications			
Fiber Type	SM		MM
Polishing	UPC	APC	PC
Insertion Loss	< 0.25dB	< 0.25dB	< 0.25dB
Return Loss	≥ 50dB	≥ 60dB	≥ 25dB
Durability	> 500 Matings		> 500 Matings
Core Diameter	9/125 μm		50/125 μm or 62.5/125 μm
Operating Temperature	Negative 20° C to Positive 70° C		
Storage Temperature	Negative 40° C to Positive 85° C		



ORDERING INFORMATION

LGX - FPP - -

1 2 3 4 5

1 CONNECTOR

F = FC
L = LC
M = MTP®
S = SC
T = ST

2 POLISH/COLOR

1 = OM1/OM2 Beige
3 = OM3/OM4 Aqua
U = SM UPC Blue
A = SM APC Green
B = Black (MTP® only)

**If ST or FC Connector:
S = Singlemode
M = Multimode

3 PACKAGE

1 = Simplex
2 = Duplex
Q = Quad

4 SHUTTERS

S = Shutters
Blank = No Shutters

5 ADAPTERS

03 = 3 Adapters
06 = 6 Adapters
08 = 8 Adapters
12 = 12 Adapters

*MTP is a registered trademark of USConneCt Lt