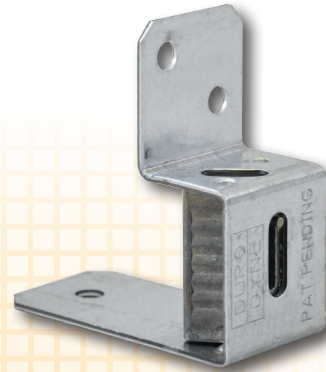




KV BRACKET

Patent #7,770,849

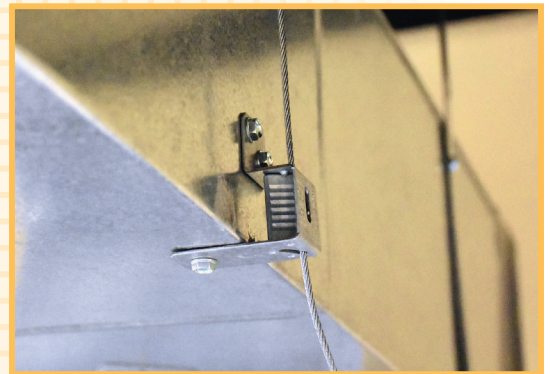
The Dyna-Tite suspension system utilizes cable locks and wire rope to secure ductwork and equipment. This method has been shown to reduce installation time and improve safety at the jobsite when compared to traditional hanging methods such as threaded rod, perforated strap, and band iron. The KV bracket enhances the Dyna-Tite suspension system by the addition of an integral bracket, which fastens the cable lock to the duct with sheet metal screws. Once the KV bracket is attached to the duct, the wire rope "drop" is passed into the entry hole at the top of the bracket, through the cable lock, and out the exit hole at the bottom. The locking teeth inside the cable lock engage the wire rope and secure the ductwork in place.



Working Load Limit: With WC2-CL6 Wire Rope: 10-75 lbs. (5-34 kg)
With WC3-CL12 Wire Rope: 25-150lbs (12-68 kg)

FEATURES

- Can be used with rectangular ductwork and equipment
- Easily attached with sheet metal screws
- Cable lock pre-assembled to bracket
- Accessible release pin for simple adjustment



Item #	Code	Description	Packaged
31075	KVFD	Zinc Plated Steel Bracket with captive WC2/WC3 cable lock for use with WC2-CL6 and WC3-CL12 Wire Rope (see working load limits above)	100 sets/ctn
30011	LC12K05WC3/KV12	5ft 1-1/2in Looped WC3-CL12 Cable w/Bracket Assembly for KV12-WC3 Lock	100 kits/ctn
30012	LC12K10WC3/KV12	10ft 1-1/2in Looped WC3-CL12 Cable w/Bracket Assembly for KV12-WC3 Lock	100 kits/ctn
30013	LC12K15WC3/KV12	15ft 1-1/2in Looped WC3-CL12 Cable w/Bracket Assembly for KV12-WC3 Lock	100 kits/ctn
30014	LC12K25WC3/KV12	25ft 1-1/2in Looped WC3-CL12 Cable w/Bracket Assembly for KV12-WC3 Lock	50 kits/ctn

The KV Bracket must be hung at a 90 degree angle to the suspension point.

***TO ENSURE SYSTEM INTEGRITY AND SAFETY, USE ONLY WITH DURO DYNE CABLE SUPPLIED IN SET.**

****ALL WARRANTIES ARE VOID IF A CABLE, OTHER THAN THE SUPPLIED DURO DYNE CABLE, IS USED.**

7/2023
BD030407



Duro Dyne Corporate Headquarters, Bay Shore, NY
 631-249-9000 • Fax: 631-249-8346
 Duro Dyne Midwest • Duro Dyne West • Duro Dyne Canada
 www.durodyne.com • E-mail: durodyne@durodyne.com