

Highly Adaptive

Provides a wide variety of configurations for your patching needs

Cost Effective

Simple rackmount design eliminates the need for individual cassettes

Hyperscale Ready

Scalable solution for port breakout, replication or pass through

Features

- Front-side: Up to (48) MTP®/MPO or LC duplex ports
- Back-side: Up to (36) MTP®/MPO or LC duplex ports
- Scalable from 48 to 1152 fibers of OM4, OM5 or SM
- Every port is numbered for easy identification
- Automatic internal shutters (LC only) prevent dust contamination
- Stable spring and screw down couplers for firm port connections
- Rear enclosure protects and secures trunk breakouts
- Removable top panel and front faceplate
- Side and rear trunk/cable entries
- Standard 19" rack mountable unit

Specifications

- Dimensions: Standard 1U height x 19" W x 8" D
- Material: 16 GA Steel, 16 GA Aluminum
- Coating: Electrostatic polyester powder coat Black paint
- Mounting hardware included
- Made in the USA
- MTP® Breakout Cassette - Low overall insertion loss (≤ 0.5 dB)

FEATURE

Side Cable Manager Option



Save valuable rack space and eliminate the need for extra cable management with our optional Side Cable Managers (add - S to the P/N for this option).

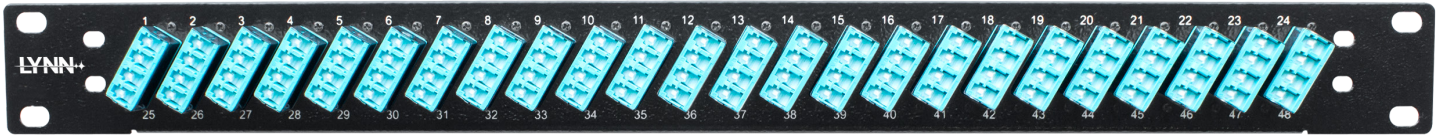
Recommended Patch Cords



Use Universal LC Elite patch cords with push-pull triggers to reduce the risk of port connection interference and make insertion/ removal of patch cords easier in high-density fiber panels.

AVAILABLE PANEL CONFIGURATIONS

48 Port Panel



MTP 12f BREAKOUT CASSETTE

PAN-48ML-OM4 48-LC dup/8-12f MTP	PAN-48ML-SM 48-LC dup/8-12f MTP
PAN-48ML-OM5 48-LC dup/8-12f MTP	PAN-48ML-SMA 48-LC dup/8-12f MTP

MTP 24f BREAKOUT CASSETTE

PAN-48NL-OM4 48-LC dup/4-24f MTP	PAN-48NL-SM 48-LC dup/4-24f MTP
PAN-48NL-OM5 48-LC dup/4-24f MTP	PAN-48NL-SMA 48-LC dup/4-24f MTP

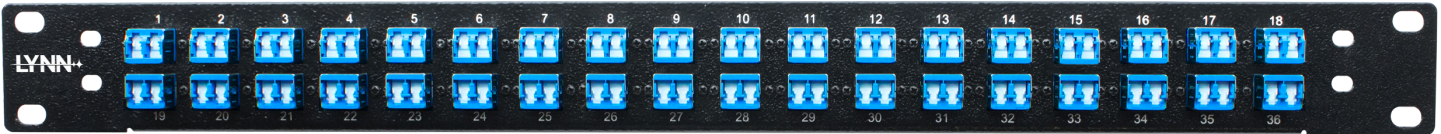
MTP to MTP PASS-THROUGH

PAN-48MM-OM4 48-MTP	PAN-48MM-SM 48-MTP
PAN-48MM-OM5 48-MTP	PAN-48MM-SMA 48-MTP

LC to LC PASS-THROUGH

PAN-48LL-OM4 48-LC dup	PAN-48LL-SM 48-LC dup
PAN-48LL-OM5 48-LC dup	PAN-48LL-SMA 48-LC dup

36 Port Panel



MTP 12f BREAKOUT CASSETTE

PAN-36ML-OM4 36-LC dup/6-12f MTP	PAN-36ML-SM 36-LC dup/6-12f MTP
PAN-36ML-OM5 36-LC dup/6-12f MTP	PAN-36ML-SMA 36-LC dup/6-12f MTP

MTP 24f BREAKOUT CASSETTE

PAN-36NL-OM4 36-LC dup/3-24f MTP	PAN-36NL-SM 36-LC dup/3-24f MTP
PAN-36NL-OM5 36-LC dup/3-24f MTP	PAN-36NL-SMA 36-LC dup/3-24f MTP

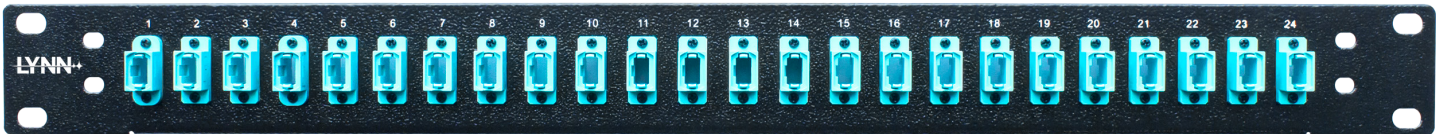
MTP to MTP PASS-THROUGH

PAN-36MM-OM4 36-MTP	PAN-36MM-SM 36-MTP
PAN-36MM-OM5 36-MTP	PAN-36MM-SMA 36-MTP

LC to LC PASS-THROUGH

PAN-36LL-OM4 36-LC dup	PAN-36LL-SM 36-LC dup
PAN-36LL-OM5 36-LC dup	PAN-36LL-SMA 36-LC dup

24 Port Panel



MTP 12f BREAKOUT CASSETTE

PAN-24ML-OM4 24-LC dup/4-12f MTP	PAN-24ML-SM 24-LC dup/4-12f MTP
PAN-24ML-OM5 24-LC dup/4-12f MTP	PAN-24ML-SMA 24-LC dup/4-12f MTP

MTP 24f BREAKOUT CASSETTE

PAN-24NL-OM4 24-LC dup/2-24f MTP	PAN-24NL-SM 24-LC dup/2-24f MTP
PAN-24NL-OM5 24-LC dup/2-24f MTP	PAN-24NL-SMA 24-LC dup/2-24f MTP

MTP to MTP PASS-THROUGH

PAN-24MM-OM4 24-MTP	PAN-24MM-SM 24-MTP
PAN-24MM-OM5 24-MTP	PAN-24MM-SMA 24-MTP

LC to LC PASS-THROUGH

PAN-24LL-OM4 24-LC dup	PAN-24LL-SM 24-LC dup
PAN-24LL-OM5 24-LC dup	PAN-24LL-SMA 24-LC dup

PERFORMANCE SPECIFICATIONS

- Insertion Loss (dB): 0.03 - 0.01(SM), 0.04 - 0.02mm
- Operation Temperature: -40 - +85
- SC and LC Choice are one-piece adapters
- All Single Mode - Zirconium Sleeves
- All Multimode - Phosphorous Bronze
- RoHS compliance 2011/65/EU
- Over 500 matings
- Meet GR-326-CORE
- Flammability: UL94 V-0 Grade

LGX Panel



- Part# PAN-LGX - 1U modular enclosure (empty)
- Accepts up to (3) LGX-size modules on the front and the back
- Easily mix-n-match port types in the same patch panel
- See LYNN LGX ADAPTER PANEL BUYING GUIDE for available modules

Rear View



- Accepts up to (3) LGX-size modules or blanking plates
- Flexible rear port locations for incoming trunks or additional patching