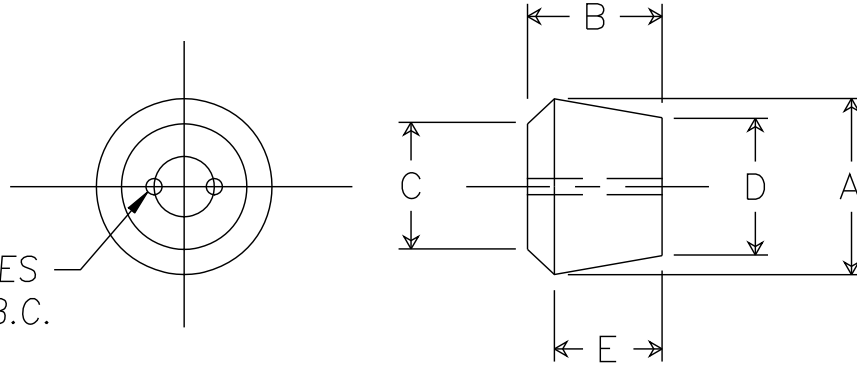


DIMENSIONS

- A .875 NOMINAL $\pm .015$ *
- B .656 $\pm .020$ *
- C .625 $\pm .015$ *
- D .687 REF.
- E .531 REF.

(2) $\phi .080$ " HOLES
LOCATED ON $.300$ " B.C.



NOTES:

- 1.) ANGULAR TOLERANCE $\pm 1/2^\circ$
- 2.) FLASH TO BE HELD TO A MINIMUM AND MAY NOT WEBB ACROSS HOLE DIA.
- 3.) ID/OD CONCENTRICITY WITHIN $.020$

REMKE INDUSTRIES
Wheeling, Illinois 60090

SCALE: APPROX FULL
 MAT'L: NEOPRENE 50-60 DUR Shore A
 FINISH: BLACK MOLDED
 PART NAME: BUSHING
 PART NO: SRB-10564-2
 DRAWING DATE: 6/30/11 C.V.

REV.	DATE	CHANGE	
A	6/30/11	TOOLING & PRODUCTION RELEASE	
			UNLESS OTHERWISE SPECIFIED
			3-PLC. DIM. $\pm .005$
			2-PLC. DIM. $\pm .010$
			1-PLC. DIM. $\pm .015$
			FRACTIONAL $\pm 1/64$
			ANGULAR ± 1