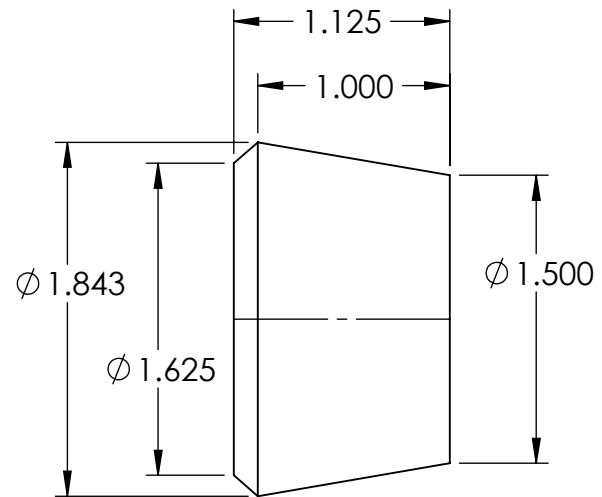


SECTION A-A



- NOTES:
1. FLASH TO BE HELD TO A MINIMUM AND MAY NOT WEB ACROSS HOLES.
 2. I.D. AND O.D. CONCENTRICITY .020.
 3. ALL OTHER DIMENSIONS $\pm .015$.
 4. MATERIAL: BLACK NEOPRENE 50-60 DUROMETER
 5. REPLACES SRB-35833C

REV.	DATE	CHANGE	UNLESS OTHERWISE SPECIFIED:	NAME	DATE	REMKE INDUSTRIES 310 CHADDICK DR, WHEELING, IL. 60090	
A	11/30/00	DRAWING RELEASED	DIMENSIONS ARE IN INCHES	DRAWN	JCN	7/15	TITLE: BUSHING
B	7/16/15	REDRAWN	TOLERANCES:	CHECKED			SIZE DWG. NO. A SBF-5003
			FRACTIONAL $\pm 1/64$	ENG APPR.			SCALE: 1:1
			ANGULAR: MACH $\pm 1^\circ$ BEND $\pm 1^\circ$	MFG APPR.			SHEET 1 OF 1
			ONE PLACE DECIMAL $\pm .015$	Q.A.			
			TWO PLACE DECIMAL $\pm .010$	PROPRIETARY AND CONFIDENTIAL THE INFORMATION CONTAINED IN THIS DRAWING IS THE SOLE PROPERTY OF REMKE INDUSTRIES. ANY REPRODUCTION IN PART OR AS A WHOLE WITHOUT THE WRITTEN PERMISSION OF REMKE INDUSTRIES IS PROHIBITED.			
			THREE PLACE DECIMAL $\pm .005$				
			INTERPRET GEOMETRIC TOLERANCING PER:				
			MATERIAL	SEE NOTE			
			FINISH				
			DO NOT SCALE DRAWING				