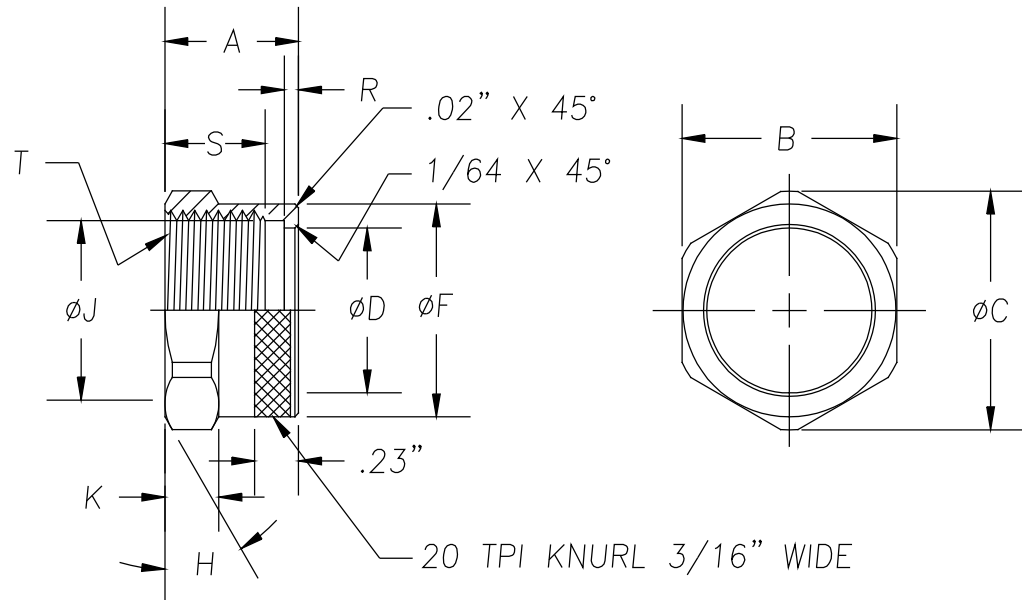
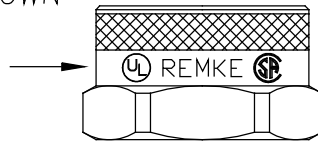


DIMENSIONS

- A .700"
- B 1-1/8" HEX
- C  $\phi$ 1.25"
- \* D  $\phi$ .864"
- F  $\phi$ 1.110" BEFORE KNURL
- H 30° CHAMF. TO DIA. 1.110"  
(TYP. BOTH SIDES OF HEX)
- \* J  $\phi$ .940"
- K .282"
- \* R .075"
- S .52" MIN. THREAD LENGTH
- \* T 1"-16 UN 2B THREAD



NOTE: IMPRINT  REMKE  AS SHOWN  
CENTERED BETWEEN HEX AND KNURL  
CHARACTER HEIGHT TO BE 7/64"



NOTES:

- 1.) PART TO BE FREE OF BURRS AND SHARP CORNERS PARTICULARLY @ BORE "D"
- 2.) \* INDICATES CRITICAL INSPECTION DIMENSIONS

REV.	DATE	CHANGE	
C	4/7/92	CHANGE TO HEX BAR STOCK	UNLESS OTHERWISE SPECIFIED 3-PLC. DIM. +/-.005 2-PLC. DIM. +/-.010 1-PLC. DIM. +/-.015 FRACTIONAL +/-.1/64 ANGULAR +/-.1°
D	10/13/97	ADD TOLERANCE CHART	
E	1/26/10	ADDED IMPRINTING INFO AND REDRAWN	

**REMKE INDUSTRIES**  
Wheeling, Illinois 60090

SCALE: FULL  
MATERIAL: 6462 T6511  
FINISH: MACHINED NATURAL  
PART NAME: NUT DROP-IN STYLE  
PART NUMBER: RSR-100-ND  
DRAWING DATE: 1/26/10 C.V.