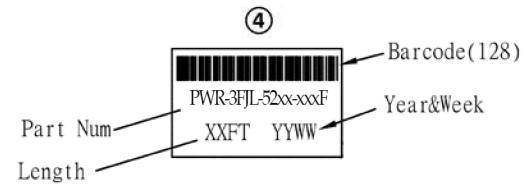
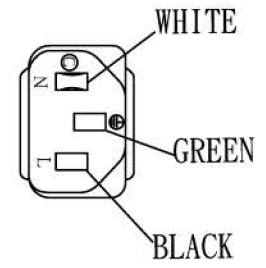
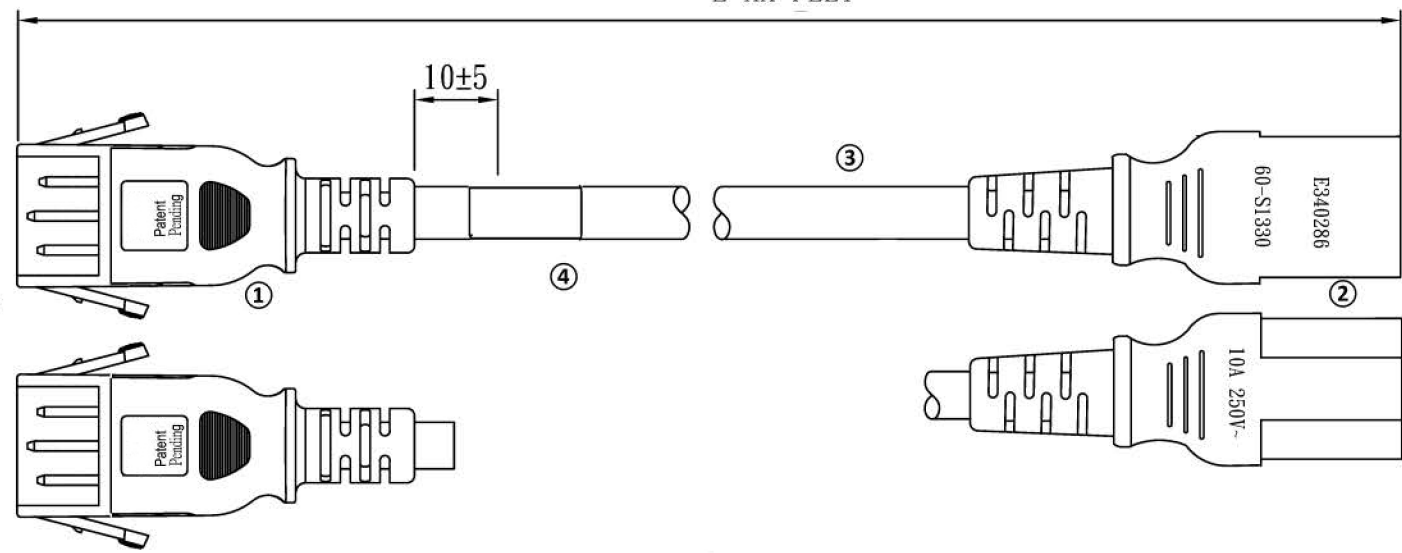
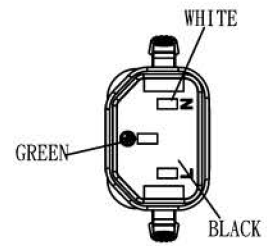


CUST P/N: P-LOCK C14 TO C13 15 AMP

ROHS COMPLIANT

ZONE		REV	DESCRIPTION	DATE	APPROVED
-	A		INITIAL DESIGN	20130630	L.Chen
-	B		US Patent No. Adding	20130729	L.Chen

L=XX FEET



ITEM	DESCRIPTION	APPROVAL	QTY
4	LABEL		1
3	WIRE SVT 14 AWG 105C 15 /300V	UL/cUL, or CAS	1
2	IEC60320 C13 CONNECTOR 10A/250V	UL/cUL	1
1	IEC60320 C14 LOCKING PLUG 15 /250V	UL/cUL	1

UNLESS OTHERWISE SPECIFIED

1) INTERPRET DRAWING LAW ASME Y14.100-2000

2) REMOVE ALL BURRS AND SHARP EDGES 0.2R MAX

3) DIMENSIONS ARE IN MILLIMETERS

4) TOLERANCES ARE:
 DECIMALS: .X +/-0.3; .XX +/-0.15;
 .XXX +/-0.005 ANGLES: +/- 1.0°

THIRD ANGLE PROJECTION	Des' d By	L. Chen
	Drawn By	Alan.M
	Rev' d By	L. Chen

LYNN

PWR-3FJL-52xx-xxxF

BK = black RD = red
 BL = blue GN = green
 xxxF = feet