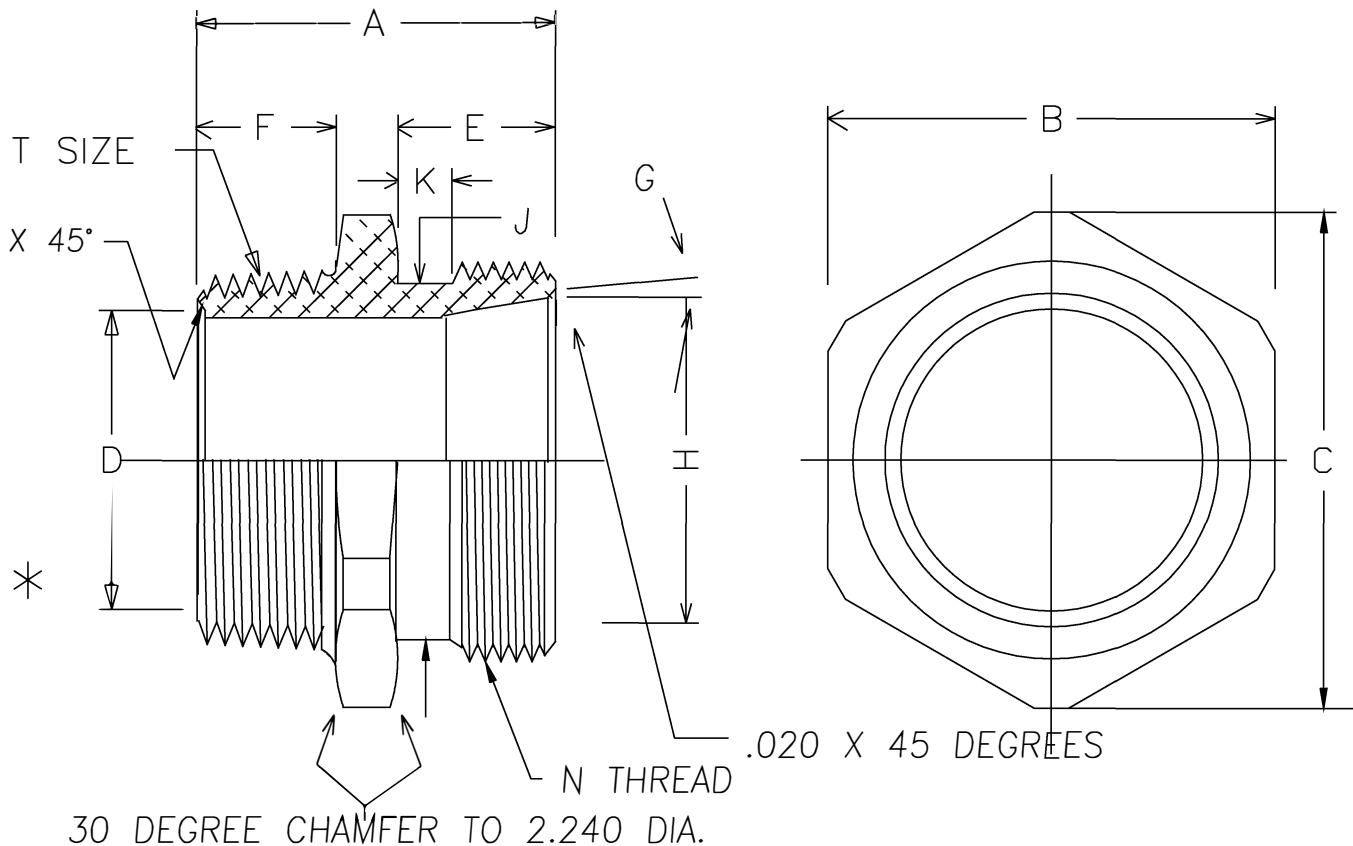


NO SHARP CORNERS – PARTICULARLY AT BORE D  
 ALL CHAMFERS ARE 45 DEGREES  
 TOLERANCES +/- .005 INCH, +/- ONE DEGREE

DIMENSIONS

A	1.820	*
B HEX	2.250	
C DIA.	2.475	
D BORE	1.438	1/32" X 45°
E	0.880	
F	0.690	*
G	10 DEGREES	
H DIA.	1.670	
J DIA>	1.880	
K	.250 MAX	
N	2"-14 UNS-2A	*
T	1 1/2" NPT	*



REV B. 2-22-96 CHANGE TO HEX BAR STOCK



SCALE: APPROX FULL  
 MATERIAL: 6262T6511 HEX ALUM  
 FINISH: NATURAL  
 PART NAME: BODY  
 PART NUMBER: RSR-500-B  
 DRAWING DATE: 801206