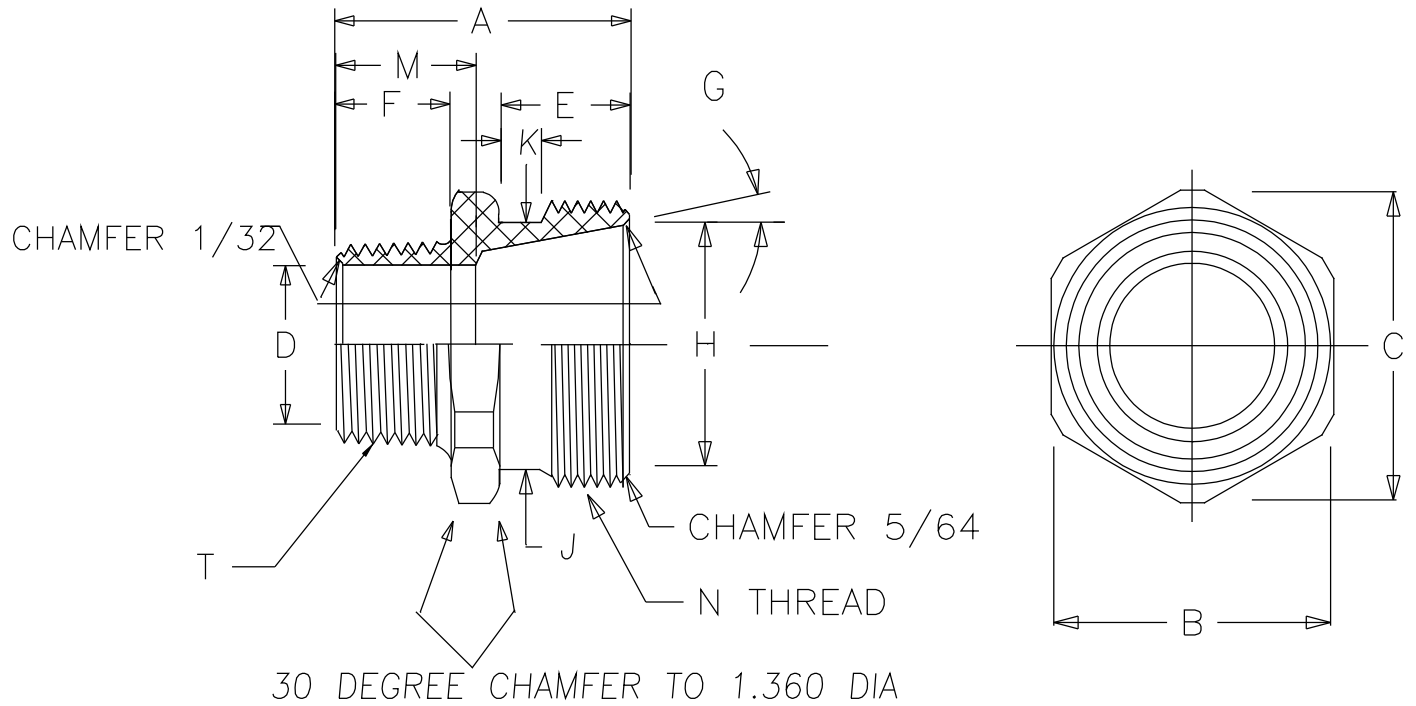


DIMENSIONS

A	1.41 *
B HEX	1.37
C DIA.	1.53
D BORE	0.81
E	0.62
F	0.57*
G	11 DEGREES
H DIA.	1.140
J DIA>	1.237
K	.250 MAX.
L	
M	0.70
N	1 3/8"-16*
P	
T	3/4" NPT*



REMKE INDUSTRIES

Wheeling, Illinois 60090

SCALE: APPROX FULL

MATERIAL: 6262T6511

FINISH: NATURAL

PART NAME: BODY

PART NUMBER: RSR-2300-B

DRAWING DATE: 801209

REV.	DATE	CHANGE	
A	12-24-82	CHANGE 1.351 DIA.	UNLESS OTHERWISE SPECIFIED 3-PLC. DIM. +/- .005 2-PLC. DIM. +/- .010 1-PLC. DIM. +/- .015 FRACTIONAL +/- 1/64 ANGULAR +/- °1
B	11-17-86	DIA. 1.055 CHANGED	
C	11-7-91	REDRAWN USING HEX BAR STOCK	
D	1-2-96	REDRAWN USING CADD 6	
E	11-21-97	CHANGE HEX BAR STOCK TO 1.37	