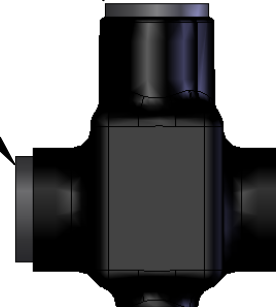


REMOVABLE CAP  
TO TIGHTEN SCREW  
(REPLACE WHEN COMPLETE)

REMOVABLE CAP  
FOR DUAL ENTRY  
(INSERT IN OTHER SIDE)

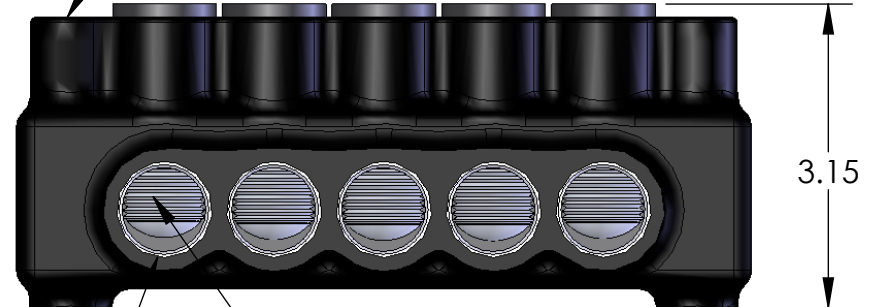
IPLMD600-5 SHOWN

PART NUMBER	NO. OF PORTS	LENGTH
IPLMD600-3	3	5.88
IPLMD600-4	4	7.18
IPLMD600-5	5	8.48
IPLMD600-6	6	9.78
IPLMD600-7	7	10.70
IPLMD600-8	8	12.38
IPLMD600-10	10	14.98
IPLMD600-12	12	17.20



WIRE ENTRY POINT  
WIRE RANGE: 600KCMIL - #6AWG  
PRE-FILLED W/ OXIDE INHIBITOR

INSULATED MOUNTING PORT ON EACH END  
FOR A 5/16 BOLT



CONTACT NSI FOR SALES @ 800.321.5847



**POLARIS**  
SALES CO. INC

PROPRIETARY AND CONFIDENTIAL

11625 PROSPEROUS DRIVE ODESSA, FL 33556

THE INFORMATION CONTAINED IN THIS DRAWING IS THE SOLE PROPERTY OF POLARIS SALES CO. INC. ANY REPRODUCTION IN PART OR AS A WHOLE WITHOUT THE WRITTEN PERMISSION OF POLARIS SALES CO. INC. IS PROHIBITED.

**TITLE:**  
INSULATED MOUNTED  
DUAL ENTRY  
600 CONNECTOR

NAME DATE  
DRAWN BY S.PARRY 06/2012

**DWG. NO.**  
IPLMD600-

**MATERIAL:** N/A

**SCALE:** N/A

**SHEET:** 1 OF 1

**NOTES:**

- CONNECTOR MANUFACTURED FROM 6061-T6 ALUMINUM ALLOY.
- UL LISTED PER UL486A/B SPECIFICATIONS FOR 600V.
- DUAL RATED FOR 75°C COPPER AND/OR ALUMINUM CONDUCTOR.
- COLD TEMPERATURE RATED TO -45°C.
- HIGH DIELECTRIC STRENGTH INSULATION IS ABRASION, CHEMICAL AND UV RESISTANT.