

**RECHARGEABLE
USB POWER BANK**

The 10,000mAh rechargeable power bank features 2 USB charging ports for USB powered devices. Use with 4-way USB charging cable to recharge the flashlights, lighter and the power bank using the solar panel.

CHARGING INSTRUCTIONS

- Plug one end of the Micro USB ends from the included 4-way charging cable into the Micro USB port on the power bank, and plug the USB end into a power source.
- The power level digital readout will illuminate to indicate the percentage of battery life.
- Charging should take 8 - 20 hours depending on the type of charger used (0.5A to 2A output).
- When the digital readout drops to zero, the power bank will turn off. Discontinue use and charge to restore capacity. The digital readout will illuminate to indicate the percentage of battery life that has been added, and the last digit will flash to indicate charging is in process. Once charging is complete, the digital readout will indicate 100, solid, to indicate charging is complete.
- It is safe to leave the product plugged in after charging is complete. It will maintain the charge level while it remains plugged in.
- When the unit is off, you can press the POWER LEVEL DISPLAY button and the digital readout will illuminate momentarily to indicate the current power level.

RECHARGING

Using the 4-way USB charging cable, plug the USB end into the power bank and the Micro USB end into the product needed charge.

THIS PRODUCT IS NOT WATERPROOF. Avoid exposure to direct rain or immersion. If the power bank becomes dirty, wipe clean with a damp cloth. Always store power bank in protective carry case when not in use. This product contains a 3.7V 10,000mAh 37Wh Lithium-Ion battery. Dispose of product in accordance with state and local regulations. Do not disassemble, puncture, or incinerate the product. Do not expose to temperatures below -20°C (-4°F) or above 60°C (140°F).



**4-WAY
USB CHARGING CABLE**

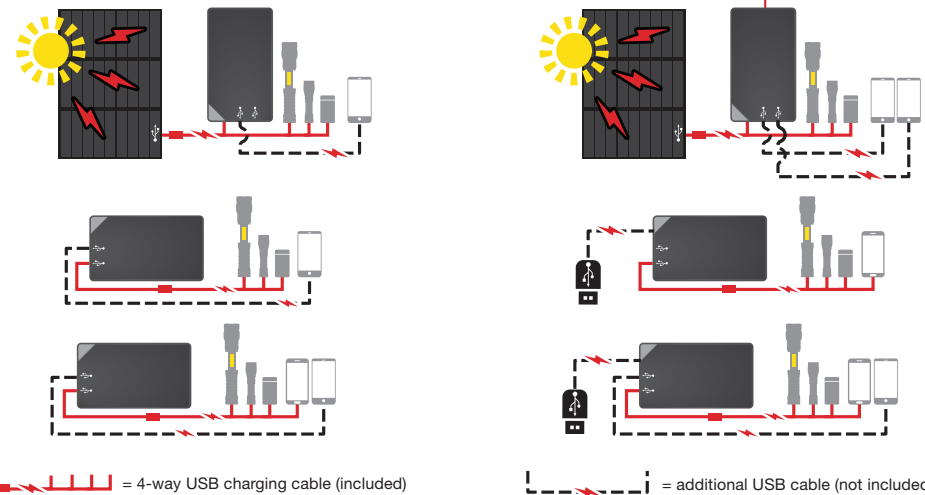
Use the 4-way USB Charging Cable features 4 Micro USB adapters to recharge all of the other EMERGENCY KIT products.

See charging configuration guide (below) for applicable uses for the 4-way charging cable.



**CHARGING
CONFIGURATIONS**

The EMERGENCY KIT is equipped to power all included devices, and then some. Use additional USB cables (not included) to power additional USB powered devices.



NEBO®

EMERGENCY KIT SOLAR + POWER + LIGHT + FIRE



2-IN-1 FLASHLIGHT + TASK LIGHT

CHARGING INSTRUCTIONS

Using the included charging cable, place the Micro USB input into the Port under the silicon cover and connect the USB input to a power source. Charging light indicator will remain **RED** until the unit is fully charged, then it will turn **BLUE**.
*Recharging may take up to 4 hours based on battery status.

LIGHTING INSTRUCTIONS

- Press button 1x to activate flashlight (top light).
- Slide open to activate work light.
- Press button 1x to activate red light.
- Press button 2x to activate red flasher.
- Slide closed to turn OFF C-O-B.

DIMMABLE BEAM

Hold button for 1.5 seconds to activate dimming function. Flashlight, C-O-B White and Red are dimmable.

- Light will dim from 100% to 10% over 3 seconds.
- Light will flash quickly when it reaches 10% or 100% to indicate it has reached the lowest or highest light output.
- Release button at any time to achieve desired brightness.
- Light will continue to dim/brighten between 100% and 10% until button is released.

MEMORY POWER SETTING

To program memory settings, start in the OFF position. Flashlight, C-O-B White and Red have this feature.

- Double-tap the button to activate Memory Power Setting. Flashlight (top) will activate.
- Follow Dimming Instructions to adjust light to desired brightness.
- Press button again to move to next setting. Light will cycle through each light mode sequentially.
- Set each light mode at desired brightness level.
- If 100% brightness is desired amongst light modes, simply press button to move to the next mode.
- Press button again to turn OFF.

To reprogram, simply repeat the previous steps.

DIRECT-TO-RED

Press and hold the button while opening the C-O-B section to activate RED directly. Press button again to cycle through remaining C-O-B light modes.

Red C-O-B is a low-signature light, which ensures stealth in the dark, enhances night vision and makes reading in little to no light possible.



400 LUMEN COMPACT FLASHLIGHT

CHARGING INSTRUCTIONS

Using the included charging cable, place the Micro USB input into the Port under the zoom head. Charging light indicator will remain **RED** until the unit is fully charged, then it will turn **BLUE**.
*Recharging may take up to 2 hours based on battery status.

LOW POWER INDICATOR

When button flashes **RED**, the battery level is at 25% or less. Steady **RED** indicates the battery level is at 10% or less (for 14500 Li-Ion battery only).

LIGHTING INSTRUCTIONS

- Press button 1x to activate HIGH mode.
- Press button 2x to activate LOW mode.
- Press button again to turn OFF.
- *Leave any mode ON for 5 seconds or longer and your next press of the button turns light OFF.

- Double press the button, from any mode, to activate STROBE mode.
- Press and hold button for 1 second, from any mode, to activate TURBO mode. TURBO mode will revert back to the prior mode after 40 seconds of use, unless pressed from OFF, it will revert to HIGH.
- *TURBO only works when using 14500 Li-Ion.

6x ZOOM

Turn head counter-clockwise for spot light, and clockwise for flood light .

BATTERY INSTALLATION

The 400 Lumen Compact Flashlight is equipped with Flex-Power Technology, which allows the light to be powered with a 14500 Li-Ion battery (included) or a single AA battery (not included).

- To access battery compartment, unscrew the end cap (where magnetic base is located) by turning counter-clockwise.
- Remove old battery, and insert new battery. Make sure that battery is aligned properly, with the negative end (-) facing the spring.
- Reattach end cap.



RECHARGEABLE PLASMA LIGHTER

GENERAL/SAFETY

- Keep the lighter out of reach of children.
- Keep the lid closed while not in use.
- RISK OF FIRE: While the plasma lighter does not use fuel, it will ignite combustible materials. When using lighter, keep away from flammable materials that you do not wish to ignite.
- When starting a fire, always work in a well ventilated area and ignite lighter away from face and clothing.
- Do not expose lighter to temperatures below -20°C (-4°F) or above 60°C (140°F).
- The lighter is equipped with a 3.7V 220mAh 0.814Wh Lithium-Ion battery. Dispose of product in accordance with state and local regulations. Do not disassemble, puncture, or incinerate the product.

CHARGING INSTRUCTIONS

- Fully charge lighter before use. Plug one of the Micro USB ends from the included 4-way charging cable into the Micro USB port on the bottom of the lighter.
- The LED around the ignition button will illuminate **BLUE** while charging and will stop illuminating when battery is full.
- It is safe to leave the lighter plugged in, when not in use. The battery level will be maintained at full even when the LED is not lit. This will not overcharge the battery.
- The lighter will not operate while charging.
- Charging should take 2-4 hours.

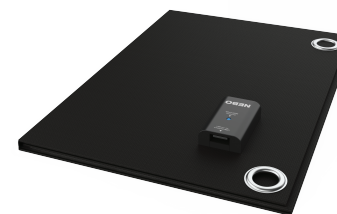
OPERATING INSTRUCTIONS

- Open the lid. The LED around the ignition button will illuminate **BLUE**.
- Press and hold the button to light the lighter. Release the button to stop ignition.
- If the ignition button is not pressed within 15 seconds, the lighter will power off. Close and reopen the lid to power the lighter on again.
- If the LED around the ignition button dims or flashes when open or when attempting ignition, discontinue use and recharge the lighter. When the power level is extremely low, the lighter will no longer ignite. Recharge to restore normal operation.
- Close the lighter when not in use.

USB SOLAR PANEL

CHARGING INSTRUCTIONS

- Open the panel and place in view of sunlight.
- The power indicator will illuminate blue when there is enough sunlight available for charging.
- Using the included charging cable, place the USB input into solar panel and attach product in need of charge.
- Refer to individual product charging instructions for charging status indication and duration.



LOW POWER INDICATOR

- When the **BLUE** LED becomes dim or turns off, this indicates that the sunlight has been blocked, has dropped to a level that is too low to support charging, or cannot support the required current for the attached device with the available sunlight. To resolve this, move the panel to a better location in view of direct sunlight. If the problem persists, try removing devices or charging one device at a time.

(Note: solar panel output will vary with the amount and strength of sunlight. In full sunlight, the full 2A output can be achieved. In overcast or cloudy conditions, output will be reduced. Some home, office, and automotive glass is tinted or treated to reduce UV or visible light transmission, which will also reduce output. If output seems reduced, try placing the panel on the outside of glass (if weather conditions permit).

THIS PRODUCT IS NOT WATERPROOF. Avoid exposure to direct rain or immersion. If the panel becomes dirty, wipe clean with a damp cloth. For best results, keep the panel clean. DO NOT BEND RIGID PORTIONS OF PANEL. Always store panel in protective carry case when not in use.

