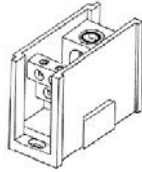


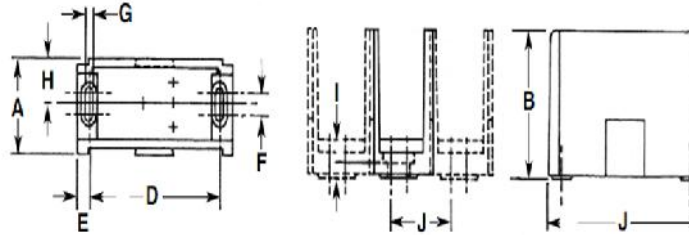


Connector Bloks™



Drawn - SD
Approved - KM

Title - Connector Bloks™



Dual Rated Connector Bloks

| Insulator Cat. No | A | B | C | D | E | F | G | H | I | J |
|-------------------|------|------|------|------|------|------|------|------|------|-----------|
| S | 1.04 | 2.34 | 2.90 | 2.25 | 0.18 | 0.35 | 0.20 | 0.46 | 0.19 | 0.63 1.25 |
| M | 1.71 | 2.62 | 4.00 | 3.50 | 0.25 | 0.37 | 0.20 | 0.79 | 0.20 | 1.25 1.87 |
| L | 2.90 | 3.25 | 5.50 | 5.00 | 0.25 | 0.50 | 0.27 | 1.38 | 0.29 | 2.25 3.25 |

| Part Number | Temp Rating | Line Side | Load Side | Amps Per Pole | Insulator Block | | | Insulator Block Size |
|-------------|-------------|------------------|----------------|---------------|-----------------|------|------|----------------------|
| | | | | | L | W | H | |
| AS-K2-H6 | 90 C | 2/0-14 AWG | 4-14 AWG | 350 | 2.90 | 1.04 | 2.34 | S |
| AM-K2-H6 | 90 C | 2/0-14 AWG | 4-14 AWG | 350 | 4.00 | 1.71 | 2.62 | M |
| AM-K2-H12 | 90 C | 2/0-14 AWG | 4-14 AWG | 350 | 4.00 | 1.71 | 2.62 | M |
| AM-K2-I6 | 90 C | 2/0-14 AWG | 2-14 AWG | 350 | 4.00 | 1.71 | 2.62 | M |
| AL-P2-H12 | 90 C | 350MCM-6 AWG | 4-14 AWG | 620 | 5.50 | 2.90 | 3.25 | L |
| AL-P2-K6 | 90 C | 350MCM-6 AWG | 2/0-14 AWG | 620 | 5.50 | 2.90 | 3.25 | L |
| AL-R2-H12 | 90 C | 500MCM-4 AWG | 4-14 AWG | 760 | 5.50 | 2.90 | 3.25 | L |
| AL-R2-K6 | 90 C | 500MCM-4 AWG | 2/0-14 AWG | 760 | 5.50 | 2.90 | 3.25 | L |
| AL-R2-M4 | 90 C | 500MCM-4 AWG | 4/0-6 AWG | 760 | 5.50 | 2.90 | 3.25 | L |