

FEATURES:

1. Heavy duty construction with corrosion-resistant terminal plates ensures dependable, easy-access multiple terminations.
2. Made from strong, glass-filled polyester.
3. Screws are #8 stud size.
4. Other sizes and styles available.
5. Accommodates wire sizes 18-10 AWG.

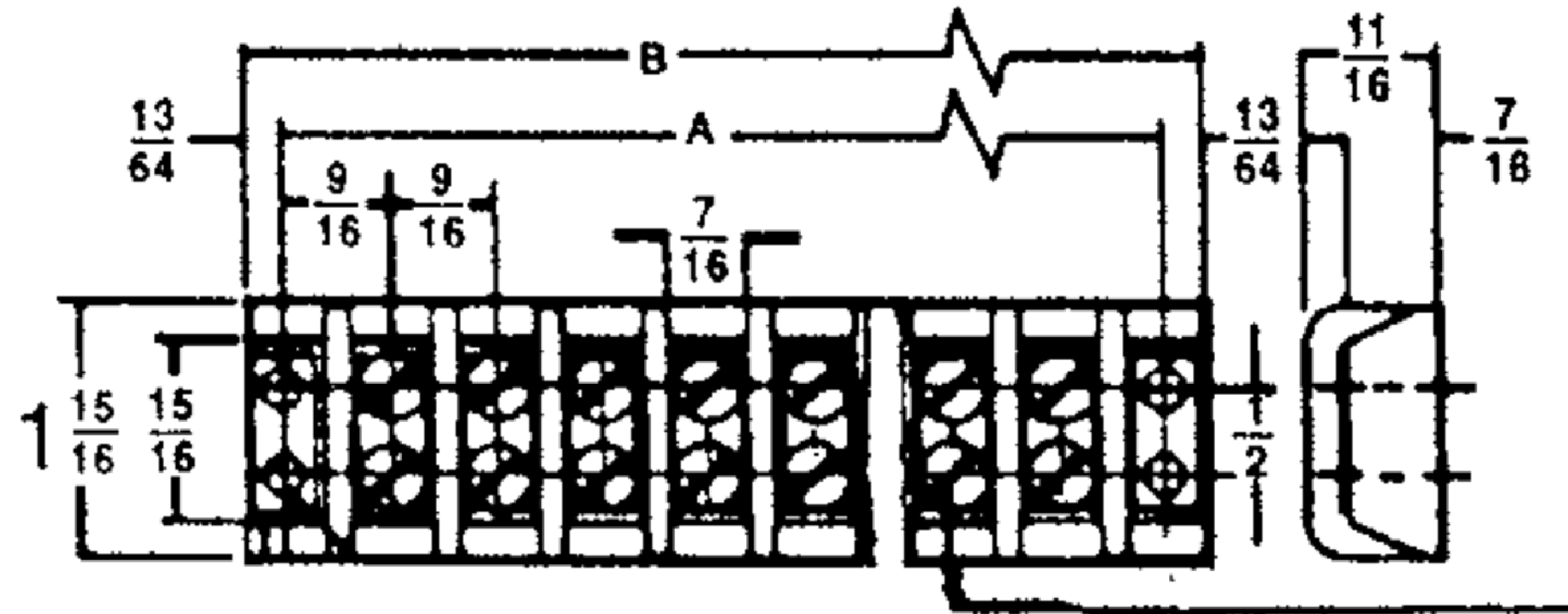
SPECIFICATIONS:

1. Temperature Rating: 208 °C.
2. Voltage: 30AMP, 600V Max.



| | |
|------------|------------|
| PROGRAM: | SOLIDWORKS |
| UPDATED: | 10/2024 |
| SALES REV: | B |
| SIZE: | C |

TB Series: Double Row 9/16" Centers



| CAT. NO. | DIMENSIONS | | STD. CTN. QTY |
|-----------|------------|-------|---------------|
| | A | B | |
| TB3096-2 | 1.688 | 2.109 | 10 |
| TB3096-4 | 2.812 | 3.250 | 10 |
| TB3096-6 | 3.938 | 4.375 | 6 |
| TB3096-8 | 5.062 | 5.500 | 4 |
| TB3096-10 | 6.203 | 6.625 | 4 |
| TB3096-12 | 7.328 | 7.750 | 3 |
| TB3096-14 | 8.453 | 8.875 | 3 |