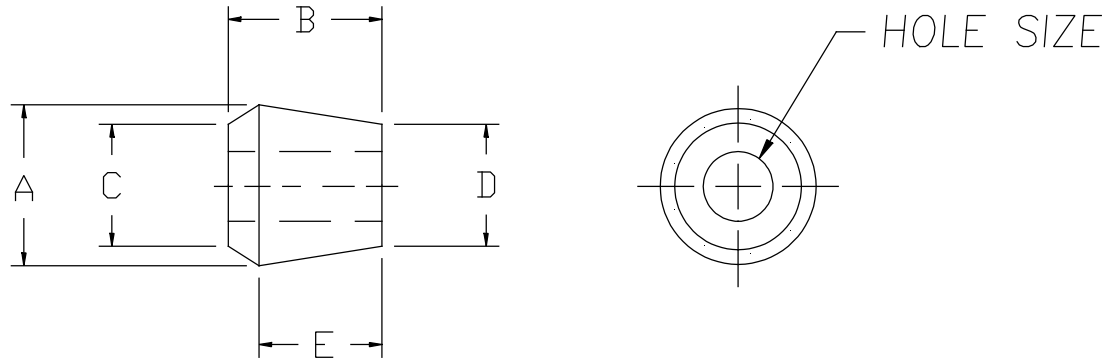


DIMENSIONS

- A .655 NOMINAL +/- .015 *
- B .562 +/- .020 *
- C .500 +/- .015 *
- D .493 REF.
- E .500 REF.



PART NUMBER HOLE SIZE +/- .010

- SRB-003 .195*
- SRB-004 .250*
- SRB-005 .312*
- SRB-006 .375*
- SRB-007 .438*

NOTES:

- 1.) ANGULAR TOLERANCE $\pm 1/2^\circ$
- 2.) FLASH TO BE HELD TO A MINIMUM AND MAY NOT WEB ACROSS HOLE DIA.
- 3.) ID/OD CONCENTRICITY WITHIN .020

* INDICATE CRITICAL INSPECTION DIMENSIONS

REV.	DATE	CHANGE	
A	4/20/00	ADDED TOLERANCES & NOTES	UNLESS OTHERWISE SPECIFIED 3-PLC. DIM. +/- .005 2-PLC. DIM. +/- .010 1-PLC. DIM. +/- .015 FRACTIONAL +/- 1/64 ANGULAR +/- °1
B	9/21/00	.195 WAS .118 (SRB-003)	
C	9/28/06	FINISH IS NOW BLACK, WAS NATURAL	

REMKE INDUSTRIES

Wheeling, Illinois 60090

SCALE: APPROX FULL

MATERIAL: NEOPRENE 50-60 DUROMETER A

FINISH: BLACK

PART NAME: BUSHING

PART NUMBER: SRB-003 THRU SRB-007

DRAWING DATE: 930205