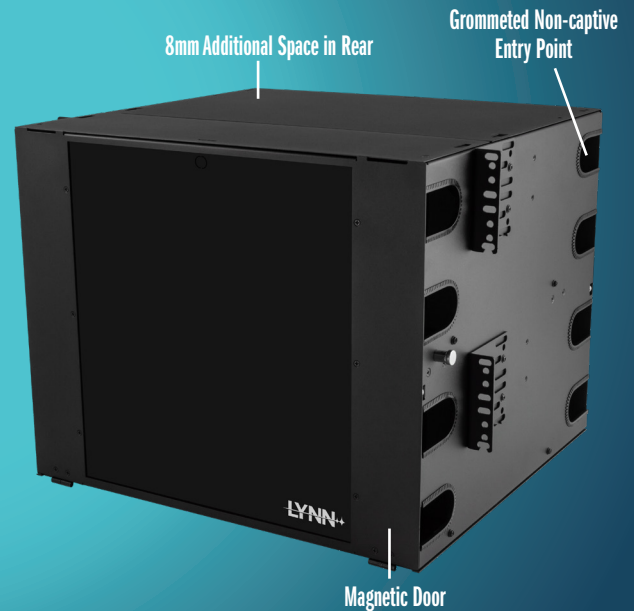


8RU Premium

Fiber Patch Panel



P/N: FPP-24-R8-07
* Available FULLY LOADED



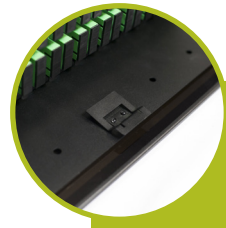
Non-captive Mounting Ears - Preinstall screws in rack, simply place rack on screws and tighten.



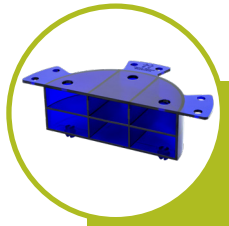
Nylon Fiber Manager Loops - Additional locations for more cable management options. Strong nylon construction with smooth rounded corners. Stress free fiber entry. Snaps into place securely, no screws. Includes 10.



Optional Locking Kit (FPP-LOCK-KIT) - Kit includes locks for front and rear. Easy to add and place key kit in knockouts.



E-Z Slide™ Tray Latch - Slides out without snags. No push/pull mechanism in the way.



Blue Half-moon Cable Managers (FPP-CBL-MGR-KIT) - No screws, snaps into place, stackable (first in industry). Includes 2.



Optional Bulk Cable Protection (FPP-BLK-PRO) - Holes designed for zip ties and Velcro®.

* All LEXAN™ SABIC Global product names are trademarks or registered trademarks of SABIC Global

8RU Premium

Fiber Patch Panel



More Features





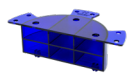
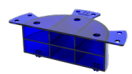
- Hinged front and rear doors
- Tinted LEXAN™ front cover
- Removable top panel and front faceplate
- Non-captive side and rear entries for trunks
- Standard 19" - 23" rack mountable unit

Specifications

- Dimensions: standard 8RU height x 19" W x 14" D
- Material: 16AWG steel
- Coating: electrostatic polyester powder coat black paint

WHAT'S INCLUDED

- 12 blue half-moon cable managers
- 8 pressure sensitive Velcro® wire mgmt. straps
- 1 ground lug kit
- 2 Velcro® splice tray tie downs (2 meters)
- 20 nylon Fiber Manager Loops
- Mounting hardware: M6 screws, M6 cage nuts
- 8 zip ties
- Port identification label

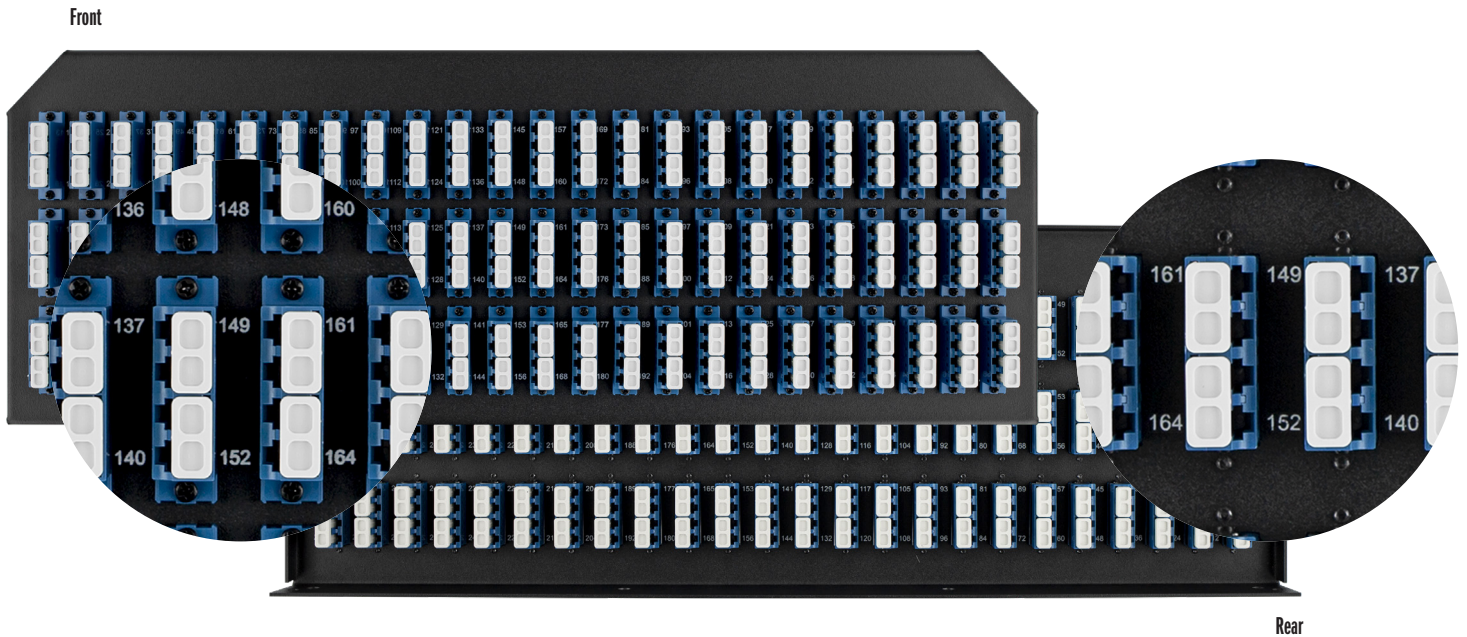
8RU Premium Patch Panel	MAX. FIBER COUNT		ADAPTER PANEL CAPACITY	SPLICE TRAY CAPACITY			
	LC	SC/ST		Plastic	Metal		
			LGX				
576	288	24		 ST-PA-24 <small>* can screw down</small> 24	 ST-M-24 24	 ST-M-24-8 24	 ST-M-36 16
				 N/A	N/A	 N/A	N/A

Premium Patch Panel Sliding Tray

-  Nylon Fiber Manager Loops
-  E-Z Slide™ Tray Latch
-  Blue Half-moon Cable Managers
-  Velcro® Tie Downs
-  Screw Down Holes for Splice Tray ST-PA-24
-  8mm Additional Space Behind Bulkhead



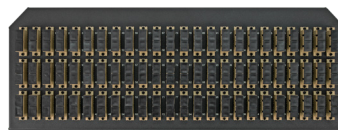
Premium Patch Panel - Bulkheads



144 Fiber SC Bulkheads



SC/AQUA MM



SC/BEIGE MM

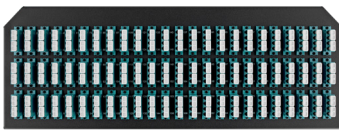


SC/UPC BLUE SM

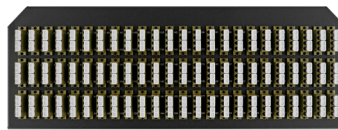


SC/APC GREEN SM

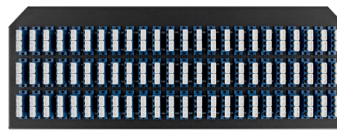
288 Fiber LC Bulkheads



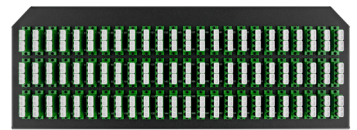
LC/AQUA MM



LC/BEIGE MM



LC/UPC BLUE SM



LC/APC GREEN SM

Non-modular

Prevents need for installing individual adapter plates

Port Numbering

Easy to read port numbering matches front and back

Roomier Port Access

Roomier spacing for easier installation changes

8RU Premium

Fiber Patch Panel

