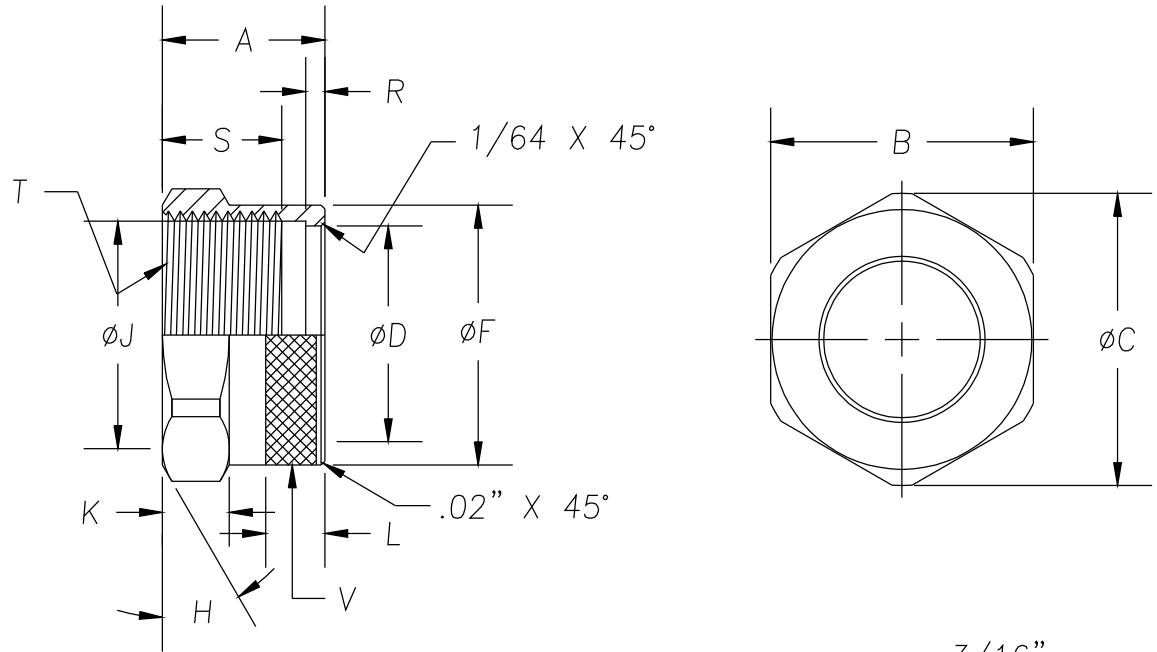
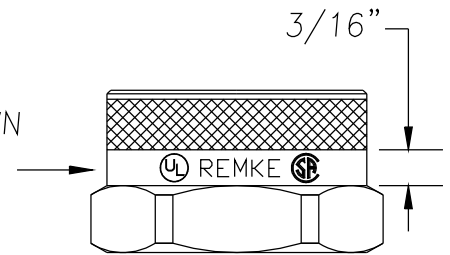


DIMENSIONS

- A .850"
- B 1-3/8" HEX
- C ϕ 1.530"
- * D ϕ 1.130"
- F ϕ 1.360" BEFORE KNURL
- H 30° CHAMF. TO DIA. 1.360"
(TYP. BOTH SIDES OF HEX)
- * J ϕ 1.190"
- K .350"
- L .31"
- * R .100"
- S .62" MIN. THREAD LENGTH
- * T 1-1/4"-16 UN-2B THREAD
- V 20 TPI KNURL 17/64" WIDE



NOTE: IMPRINT REMKE AS SHOWN
CENTERED IN 3/16" SPACE ABOVE HEX
CHARACTER HEIGHT TO BE 1/8"



NOTES:

1.) PART TO BE FREE OF BURRS AND SHARP CORNERS PARTICULARLY @ BORE "D"

* 2.) INDICATES CRITICAL INSPECTION DIMENSIONS

REV.	DATE	CHANGE	
A	4/7/93	CHANGE TO HEX BAR STOCK	UNLESS OTHERWISE SPECIFIED 3-PLC. DIM. +/-.005 2-PLC. DIM. +/-.010 1-PLC. DIM. +/-.015 FRACTIONAL +/-.1/64 ANGULAR +/-.1°
B	2/16/95	REDRAWN IN CAD & CHANGED DIM. "G"	
C	10/13/97	ADD TOLERANCE CHART	
D	5/8/08	ADDED INSPECTION NOTE	
E	2/4/10	REDRAWN & ADDED UL REMKE CSA	

REMKE INDUSTRIES
Wheeling, Illinois 60090

SCALE: FULL
MATERIAL: 6462 T6511
FINISH: MACHINED NATURAL
PART NAME: NUT
PART NUMBER: RSR-200-ND
DRAWING DATE: 2/4/10 C.V.