

## Four Channel Temperature Data Logger with Display

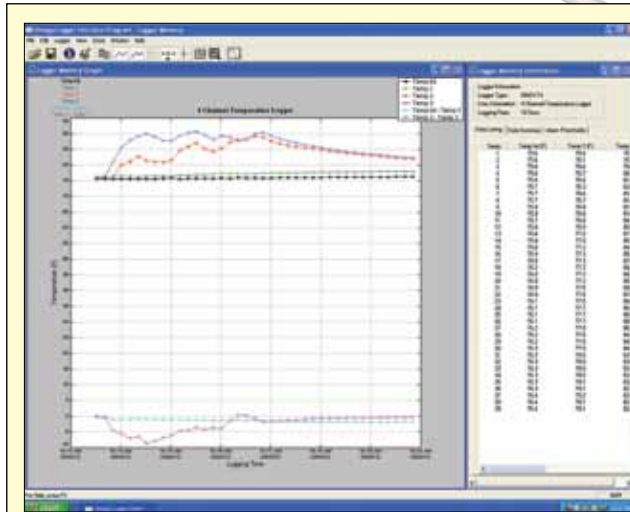


OM-DVT4



OM-DVT4 shown smaller than actual size with 3 external probes (included).

- ✓ Measures and Records Temperatures From One Internal Sensor and 3 External Probes
- ✓ Text Display: Real Time Temperature, Logging Summary, Sample Rate, Memory Used and Memory Left
- ✓ Graph Display: Shows Measurement Trends with Scrolling Feature
- ✓ Visual Over and Under Alarm Indicators
- ✓ USB Connection
- ✓ Compatible with Windows® XP SP2/Vista/7 and 8 (32-bit and 64-bit)
- ✓ Ideal for Refrigerators/Freezers, Museums, Computer Rooms, Labs

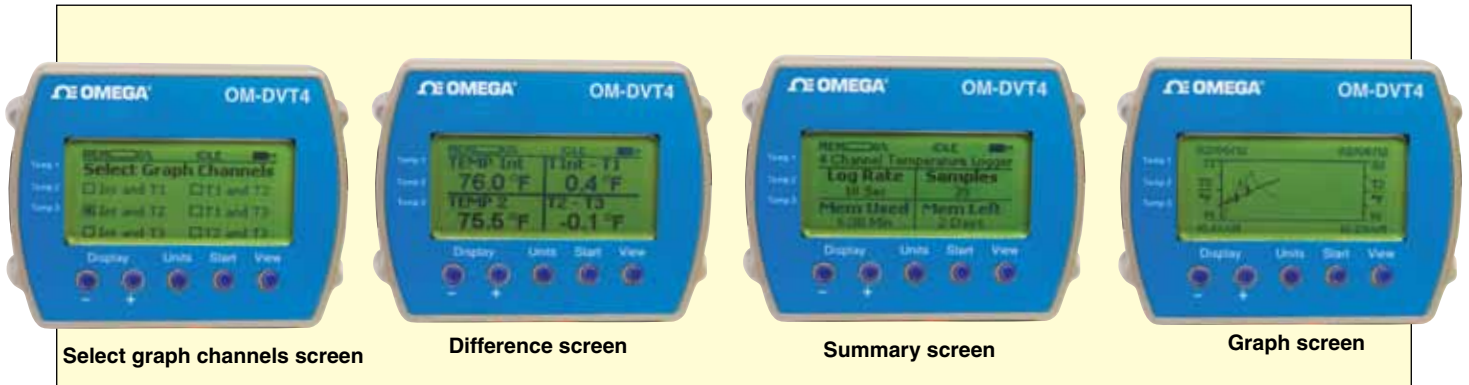


Full featured, Windows® software (included) allows the user to set up all data logging functions.

The OM-DVT4 temperature data logger with display is an easy-to-use, versatile device which can be used for a wide range of logging applications. The OM-DVT4 records and instantly displays trends for up to 4 temperatures using one internal and three external sensors. The large, clear display shows all channels simultaneously, as well as the temperature difference between channels. When you're ready, download up to 87,000 data points

to your PC for further analysis. Data logging has never been this visual! The OM-DVT4 is capable of sampling as fast as once per second or as slow as every 18 hours. A total of 87,040 temperature measurements can be stored in the data logger memory (21,760 measurements per channel). Visual over and under temperature alarm indicators are available for all four channels.

Easy-to-use Windows software is included with the OM-DVT4. The software is a full-featured program that allows you to set up all data logger functions including sampling rate, logging duration, start mode, logging mode, and high and low temperature alarm values. Once data has been logged, the program then allows you to download data from the logger, plot the data and export the data to an ASCII text or Excel file format for further analysis.



## Specifications

### DATA LOGGER

**Internal Probe Temperature Range:** -10 to 65°C  
(15 to 150°F)

**External Probe Temperature Range:** -40 to 70°C  
(-40 to 160°F)

**Temperature Accuracy:** ±0.5°C (1°F)

**Temperature Resolution:** 0.1°F or 0.1°C

**Time Accuracy:** ±100 ppm @ 75°F

**Calibration:** User single point offset calibration is available through software for all temperature channels. Calibration can be password protected.

**Sample Rate:** User selectable 1 second to 18 hour

**Sample Storage Capacity:** 21,760 points for 4 temperatures, 29,013 points for 3 temperatures, 43,520 points for 2 temperatures, 87,040 points for single temperature

**Alarms:** Visual over and under alarm indicator for all 4 channels

**Power:** Three "AA" batteries (included)

**Battery Life:** 1 year continuous use, 2 years average use. The logger automatically turns itself OFF after 1 hour, when not logging. Turn ON by pressing any button.

**Operating Temperature:** -10 to 65°C (15 to 150°F)

**Storage Temperature:** -20 to 70°C (-5 to 160°F)

**Dimensions:** 7.7 H x 10.2 W x 3.8 cm D  
(3.05 x 4 x 1.5")

**Weight:** 200 g (7.0 oz)

### EXTERNAL PROBES

**Number of Channels:** 3

**Probe Cable Length:** 4.6 m (15'), PVC insulation

**Probe Tip Material:** Nickel plated brass

**Probe Tip Dimensions:** 5 cm (2") L, 5 mm (0.2") dia

### SOFTWARE

**PC Interface:** USB port; USB cable is included

**Sampling Interval:** User selectable from 1 second to 18 hours, in 1 sec increments

**Data Security:** Unique factory set logger ID. Recording session counter. Password protected calibration.

**Operating System Compatibility:** Windows® XP SP2/ Vista/7 and 8 (32-bit and 64-bit)

**Minimum System Requirements:** 5 MB of free disk space, 800 x 600 screen resolution, 1 free USB port

**Recording Start:** On button press, immediate after setup, or at a user specified date and time

**Recording Mode Stop:** On memory full, or continuous recording with memory rollover

**Real Time Status:** Visual indication through the status LED. Software real time status.

**User Calibration:** Password protected calibration for each channel

**User Information:** Up to 30 characters

**Logger Channels:** User selectable. Disabling channels increases the storage capacity of the other channels.

**Units:** US and Metric

**Data Format:** Exportable to text or Excel files



OMEGACARE<sup>SM</sup> extended warranty program is available for models shown on this page. Ask your sales representative for full details when placing an order. OMEGACARE<sup>SM</sup> covers parts, labor and equivalent loaners.

## To Order

Model No.	Description
OM-DVT4	4-channel temperature data logger with display

Comes complete with operator's manual and Windows software on CD ROM, 3 "AA" batteries, set of 3 external temperature probes and 1.8 m (6 ft) USB interface cable.

**Ordering Example:** OM-DVT4 4 channel temperature data logger with display and OCW-1 OMEGACARE 1-year extended warranty adds 1 year to standard 1-year warranty.