

Fiber Optic Trunks

by LYNN



Spooled delivery available



Pulling Eye Option



Slim Trunks (3mm) available in 8, 12, & 24 fiber

202212.02

Plug & Play

Made-to-order for easy connection into patch panels

Ultra High Performance

Constructed with Corning® Bend Insensitive Fiber and best-in-class connectors (STANDARD)

Hyperscale-Ready

Sub-unitized to reduce snag points and overall diameter while providing better protection

* Corning® is a registered trademark of Corning Cable Systems Inc.

Features

- Pulling eye on one side (if over 300ft pulling eyes installed on both ends)
- Delivered spooled if over 100ft

Industry Standard

- TIA/EIA-568-C.3
- IEEE802.3z
- RoHS Compliant
- GR-409-CORE-12: Backbone tensile; 150lbs installation tension
- ICEA S-83-596
- CSA C22.2#232

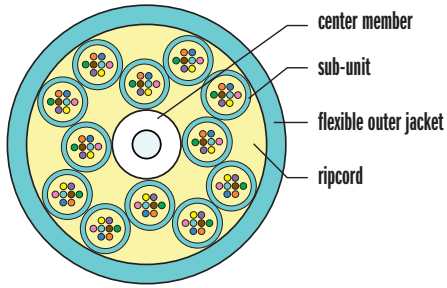
Specifications

- Fiber Types: BIF- Bend Insensitive Fiber (High Bend Radius)
 - > Corning Clearcurve 50/125 OM3, OM4, OM4+ (violet), OM5 **BIF**
 - > Corning Clearcurve SM Ultra XB (G.657.A1) **BIF**

Labeling

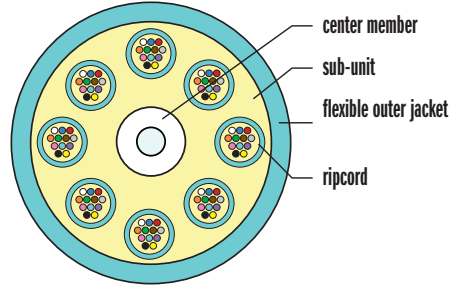
- Each breakout individually labeled and numbered
- Unique serial number and part number on each end

BASE-8



- Optimized for 8-fiber transceiver technologies
- 100% fiber utilization for 8-fiber transceiver systems

BASE-12



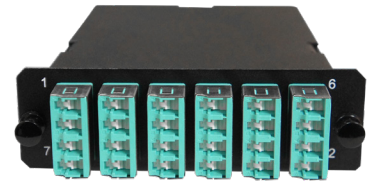
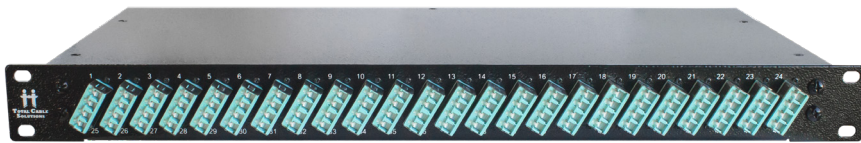
- High connector fiber density
- Larger number of fibers installed quickly

How to choose?

The usage of 40G and 100G transmission will be the key deciding factor. As a greater number of 40G and 100G circuits are deployed the benefits of matching the fiber count in the MTP backbone with the fiber count of the transceiver outweighs the density benefit of Base-12 connectivity.

PATCH PANELS

For an end-to-end structured cabling system, TCS offers a wide variety of patch panel and MTP cassette designs that plug-n-play with our fiber trunks to form a complete high-performance patching solution for today's data center networks.



TAKE IT UP A NOTCH

TCS also offers a variety of ruggedized trunk cable options perfect for outdoor use in hazardous areas.



Armored Trunks



Indoor/Outdoor Trunks

Fiber Optic Trunks

by LYNN



PERFORMANCE SPECIFICATIONS

Fiber Type	MTP® Connectors				Universal LC Elite™		SM (Non-MTP®)		MM (Non-MTP®)
	Ultra High Performance		Elite (MTP® Standard)		SM (UPC)	MM (PC)	UPC	APC	PC
Polishing	SM (APC)	MM (PC)	SM (APC)	MM (PC)	SM (UPC)	MM (PC)	UPC	APC	PC
Insertion Loss	< 0.25dB	< 0.25dB	< 0.35dB	< 0.35dB	< 0.15dB	< 0.15dB	< 0.25dB	< 0.25dB	< 0.25dB
Return Loss	± 0.55dB	±0.60dB	± 0.55dB	±0.60dB	≥50dB	≥25dB	± 0.55dB	±0.60dB	± 0.25dB
Durability	> 500 Matings		> 500 Matings		> 500 Matings		> 500 Matings		> 500 Matings
Core Diameter	9/125	50/125 or 62.5/125	9/125	50/125 or 62.5/125	9/125	50/125 or 62.5/125	9/125		50/125 or 62.5/125
Operating Temperature	Negative 20° C to Positive 70° C								
Storage Temperature	Negative 40° C to Positive 85° C								

MATERIAL SPECIFICATIONS

						Tension LBS (N)		Bending Radius (CM)	
	Fiber Count	Number of Subs	Subunit Size	OD (mm)	Weight, Approx (LBS/1KFT)	Installation	Long Term	Installation	Long Term
SUM	8	1	8	3.0	7.9	50 (220)	17 (75)	30	45
	12	1	12	3.0	7.9	50 (220)	17 (75)	30	45
	24	1	24	3.0	7.9	22 (98)	7 (30)	30	45
TRUNK*	24	2	12	7.0	32	150 (160)	45 (198)	10.5	7
	24	3	8	7.0	32	150 (160)	45 (198)	10.5	7
	32	4	8	7.0	33	150 (160)	45 (198)	10.5	7
	48	4	12	7.0	33	150 (160)	45 (198)	10.5	7
	48	6	8	8.2	43	150 (160)	45 (198)	12.3	8.2
	64	8	8	10.5	35	150 (160)	45 (198)	15.8	10.5
	72	6	12	8.2	44	150 (160)	45 (198)	12.3	8.2
	96	8	12	10.5	84	150 (160)	45 (198)	15.8	10.5
	96	12	8	10.5	46	150 (160)	45 (198)	15.8	10.5
	144	12	12	10.5	67	150 (160)	45 (198)	15.8	10.5
144	18	8	12.9	105	160 (160)	45 (198)	19.3	12.9	

* Indoor Microcore cable

ORDERING INFORMATION

T - - - -

1 2 3 4 5 6 7 8 9 10 11 12 13 14 15 16 17 18 19

<p>1 FIBER COUNT 3-Digit count (ie. 06, 08, 12, 24 etc.)</p>	<p>2 SUB-UNIT SIZE Blank = Base-12 -08 = Base-08</p>	<p>3 8 CONNECTOR BL = Blunt UE = Universal LC Elite™ L1 = LC Simplex L2 = LC Duplex LU1 = LC UPC Simplex</p>	<p>4 9 BREAKOUT TYPE S = Staggered Blank = Even</p>
<p>5 10 BREAKOUT LENGTH (in feet) 1-Digit length (ie. 3, 4, 5)</p>	<p>6 11 PULLING EYE P = Pulling Eye Blank = None</p>	<p>7 12 BREAKOUT SIZE 2 = 2mm 3 = 3mm 9 = 900µm</p>	<p>13 FIBER TYPE 3 = OM3 4 = OM4 P = OM4+</p>
<p>15 CORE TYPE M = Microcore MS = Slim Microcore (3mm Round) A = Armored</p>	<p>16 WIRING METHOD Blank = Method B (standard) A = Method A C = Method C</p>	<p>17 ORIGIN U = US Made Blank = Other</p>	<p>14 FIRE RATING P = Plenum (STANDARD) R = Riser</p>
		<p>18 LENGTH 3-Digit Length (ie. 001, 0.50, 0.25)</p>	<p>19 UNIT OF MEASURE F = Feet M = Meters</p>