



BRIDGPOR^T

MIGHTY-ALIGN[®] SLIP COUPLINGS & CONNECTORS

PRODUCT BROCHURE



EMT SLIP COUPLINGS

Used to join two lengths of EMT in tight or limited access applications. Back out center screw, slide coupling over one end of conduit then slide other conduit into place. Fully install center screw between conduits and tighten set screws.

- Use in limited space applications
- Save time joining racked runs
- Use for pre-fab construction
- NRTL Listed
- Patented design Patented. US Patent D702,542.



Steel



Zinc



File No. E9391

ZINC PLATED STEEL

CATALOG NUMBER	TRADE SIZE	UNIT QTY	STD PKG QTY
241-SLP	3/4"	25	250
242-SLP	1"	20	200
243-SLP	1 1/4"	15	90
244-SLP	1 1/2"	10	60
245-SLP	2"	5	30
246-SLP*	2 1/2"	2	10
247-SLP*	3"	2	10
248-SLP*	3 1/2"	-	6
249-SLP*	4"	-	6

ZINC DIE CAST

CATALOG NUMBER	TRADE SIZE	UNIT QTY	STD PKG QTY
241-DCSLP	3/4"	25	250
242-DCSLP	1"	25	250
243-DCSLP	1 1/4"	10	100
244-DCSLP	1 1/2"	10	100
245-DCSLP	2"	10	60
246-DCSLP*	2 1/2"	-	12
247-DCSLP*	3"	-	12
248-DCSLP*	3 1/2"	-	6
249-DCSLP*	4"	-	6



EMT SLIP CONNECTORS

Used to connect EMT to an enclosure in tight or limited access applications. Simply slide fitting onto conduit to the end stop, position EMT, and then slide the connector into the K.O. Align the end of the EMT with the sight window for proper pipe engagement, and tighten set screw.

Patented. US Patent 9,705,295.

* Also listed for Rigid Conduit

- Use in limited space applications
- Use to connect EMT between mounted enclosures or equipment
- No more wasting time with short conduit cuts
- Full length raceways improve equipment bonding integrity
- cETLus Listed
- Patented design



ZINC PLATED STEEL

CATALOG NUMBER	TRADE SIZE	UNIT QTY	STD PKG QTY
231-SLP	3/4"	10	100
232-SLP	1"	10	100
233-SLP	1 1/4"	3	30
234-SLP	1 1/2"	2	20
235-SLP	2"	2	4
246-SLP*	3"	-	1
247-SLP*	4"	-	1

No more wasting time with short conduit cuts. Simply measure between the fittings end stops for proper EMT conduit installation.



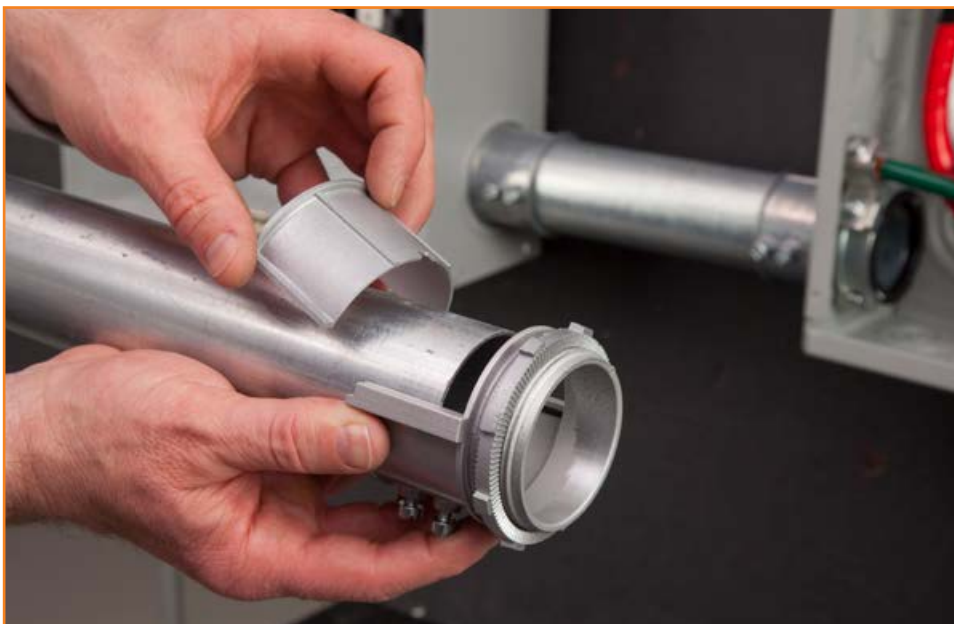
Patented. US Patent D782,621; D754,303.

* Also listed for Rigid Conduit

ZINC DIE CAST

CATALOG NUMBER	TRADE SIZE	UNIT QTY	STD PKG QTY
232-DC2SLP	1"	25	250
233-DC2SLP	1 1/4"	10	100
234-DC2SLP	1 1/2"	10	100
235-DC2SLP	2"	10	60
237-DC2SLP*	3"	1	6
239-DC2SLP*	4"	1	6

File No. E9391



*2 1/2" through 4" Listed for EMT/IMC/Rigid

PREFAB FASTER.



AC/MC/FMC

- E-Z Lock® Connectors in Zinc and Steel
- Unique Snap-in Solutions



RIGID/IMC

- Robust Zinc and Malleable Iron Fittings
- Threaded Hubs
- Mighty-Align® Raintight Three Piece Couplings



EMT

- Time-Saving EMT Fittings
- Mighty-Bite® Push-EMT® Grounding Bushings
- Concrete Tight Push-EMT® Connectors and Couplings



GROUNDING PRODUCTS

- Mighty-Bond® Enclosure and Conduit Grounding Connectors
- Mighty-Bond® Intersystem Grounding Bridges
- Grounding Locknuts



TRANSITION FITTINGS

- Mighty-Merge® Fittings – Industry's largest selection of combination couplings for easy raceway and cable transitioning



STRAPS

- Supports Multiple Sizes and Ranges
- Mighty-Hold® Universal Clamp Straps
- Mighty-Hold® Universal AC/MC Cable Straps



To order, contact your local sales representative.

nsiindustries.com/bridgeport

800.321.5847