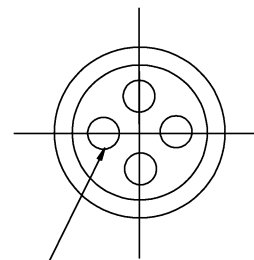
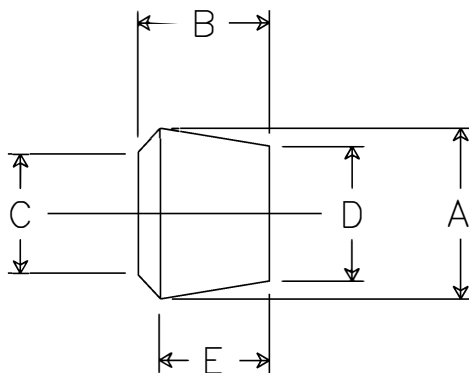


DIMENSIONS

A	.875
B	.656
C	.625
D	.687
E	.531



NOTE: FOUR HOLES .156 DIA.
EVENLY SPACED ON A .360
DIA. CIRCLE.
HOLE SIZE $\pm .010$

NOTES:

- 1.0 ANGULAR TOLERANCE $\pm 1/2$ DEGREE
- 2.) FLASH TO BE HELD TO A MINIMUM
AND MAY NOT WEBB ACROSS HOLE DIA.
- 3.) 1D/OD CONCENTRICITY WITHIN .20
- 4.) ALL OTHER DIM $\pm .015$



SCALE:	APPROX FULL
MATERIAL:	NEOPRENE 50-60 DUROMETER
FINISH:	NATURAL BLACK
PART NAME:	BUSHING
PART NUMBER:	SRB-10532-4
DRAWING DATE:	3/07/01