

TORK[®]

5404A

cUL[®] US
LISTED
469D
PHOTOCONTROLLER

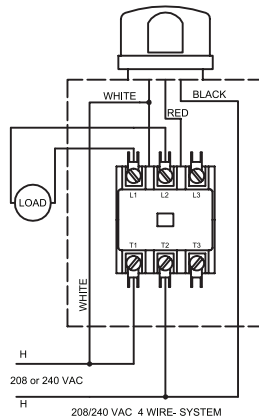
PHOTOELECTRIC CONTROL RELAY

RATING PER POLE:

40AMP 120-277VAC Resistive
40AMP 120-277VAC FLA
30AMP 120VAC Tungsten
40AMP 120-277VAC Ballast
40AMP 120-277VAC LED
3HP 120VAC Motor
7.5HP 240VAC Motor

COIL: 208-240VAC

USE ONLY 5237-UL
PHOTOCONTROL



INSTALLATION INSTRUCTIONS

WARNING: Lockout power at main panel before initial wiring or servicing of this device or any equipment connected to it. More than one disconnect point may be required.

Use copper wire only with a minimum rating of 75° C (167° F). Minimum 25 in. lbs torque required at the terminals to ensure proper connections. Connect in accordance with national and local electrical codes.

Fasten the case to mounting surface. Note the position of the arrow on the receptacle which represents photocontrol sensor direction. If necessary loosen the screws in the receptacle and turn it until the arrow is properly directed away from artificial light or any obstructions. Re-tighten screws securely. Insert photocontrol into receptacle on top of the case and turn it clockwise to lock it. Connect loads per diagram provided.

THE PHOTOCONTROL USED WITH THIS DEVICE IS QUICK-RESPONSE AND WILL TURN THE LOAD OFF AT POWER UP WHEN SUFFICIENT LIGHT IS PRESENT.

Scan with mobile device for additional information



FOR TECHNICAL SUPPORT:
SOUTIEN TECHNIQUE :
PARA COMUNICARSE CON
EL SERVICIO TÉCNICO:
888.500.4598 LI-299(F)



NSI Industries
800.321.5847
nsiindustries.com

NSi Industries, LLC
DOOR LABEL
p/n 5404A LI-299(F)
3.5" x 7.5"
1/0 (BLACK)
01/2025