

FEATURES:
COPPER SINGLE LUGS - CU - EXTRUDED STYLES

1. Solid one-piece copper connector made from extruded copper for superior mechanical strength and excellent electrical performance.
2. Steel screw
3. For use with copper wire only.

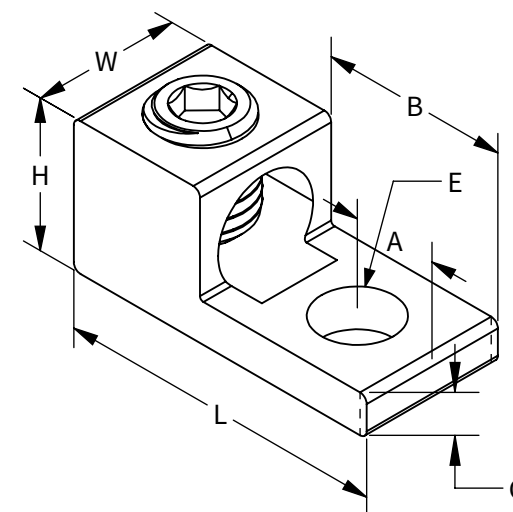
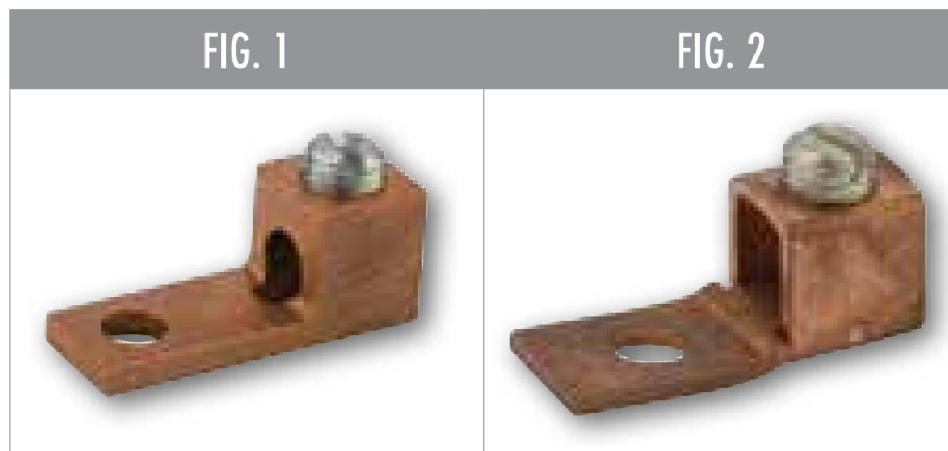
COPPER SINGLE LUGS - CU - TUBULAR STYLES

1. Copper connector made from tubular copper.
2. Steel screw
3. For use with copper wire only.



PROGRAM:	SOLIDWORKS
UPDATED:	10/2024
SALES REV:	A
SIZE:	B (11x17)

TC Series: Copper Single Lugs Extruded & Tubular



SPECIFICATIONS

1. UL Listed E155274
2. UL486A Listed for Wire Connector.
3. Temperature Rating: 90 °C. 9CU.
4. Voltage: 600V max

CAT. NO.	FIG. NO.	WIRE RANGE	MAX TORQUE VALUE (IN./LBS.)	HEX WRENCH SIZE	MTG. BOLT SIZE	LENGTH (L)	HEIGHT (H)	WIDTH (W)	MTG. HOLE DIA. (E)	TANG LENGTH (B)	END OF CONN. TO CENTER HOLE (A)	TANG THICKNESS (C)	STD. CTN. QTY.
6TC	1	6-14 AWG	25	Slotted	3/16	1.020	0.400	0.375	0.193	0.650	0.187	0.115	100
4TC	1	4-14 AWG	25	Slotted	1/4	1.075	0.440	0.450	0.265	0.747	0.275	0.100	100
2TC	1	2-14 AWG	30	Slotted	1/4	1.125	0.484	0.458	0.265	0.650	0.325	0.125	100
0TC	1	1/0-14 AWG	40	Slotted	1/4	1.277	0.680	0.548	0.265	0.677	0.337	0.125	50
4/0TC	1	4/0-2 AWG	200	5/16"	3/8	1.950	0.950	0.812	0.390	1.075	0.406	0.218	25
6TC-1	2	6-14 AWG	25	Slotted	3/16	0.995	0.778	0.345	0.203	0.620	0.226	0.610	100
4TC-1	2	4-14 AWG	45	Slotted	1/4	1.255	1.255	0.453	0.258	0.755	0.500	0.750	100

