

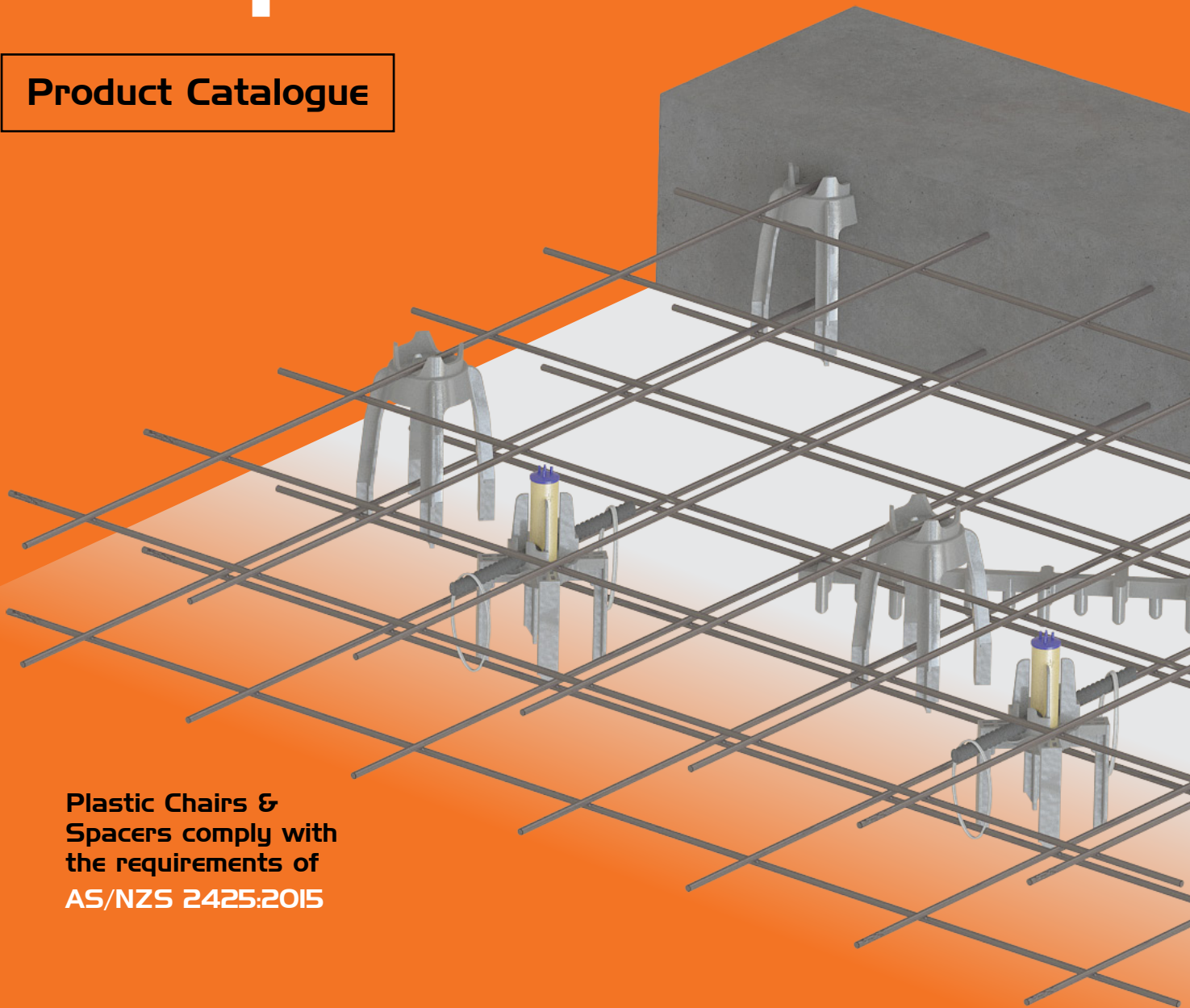


August | 2022

AUS

Plastic Chairs & Spacers

Product Catalogue



Plastic Chairs &
Spacers comply with
the requirements of
AS/NZS 2425:2015

Plastic Chairs & Spacers



Top Deck Chair

AS/NZS 2425:2015 Compliant

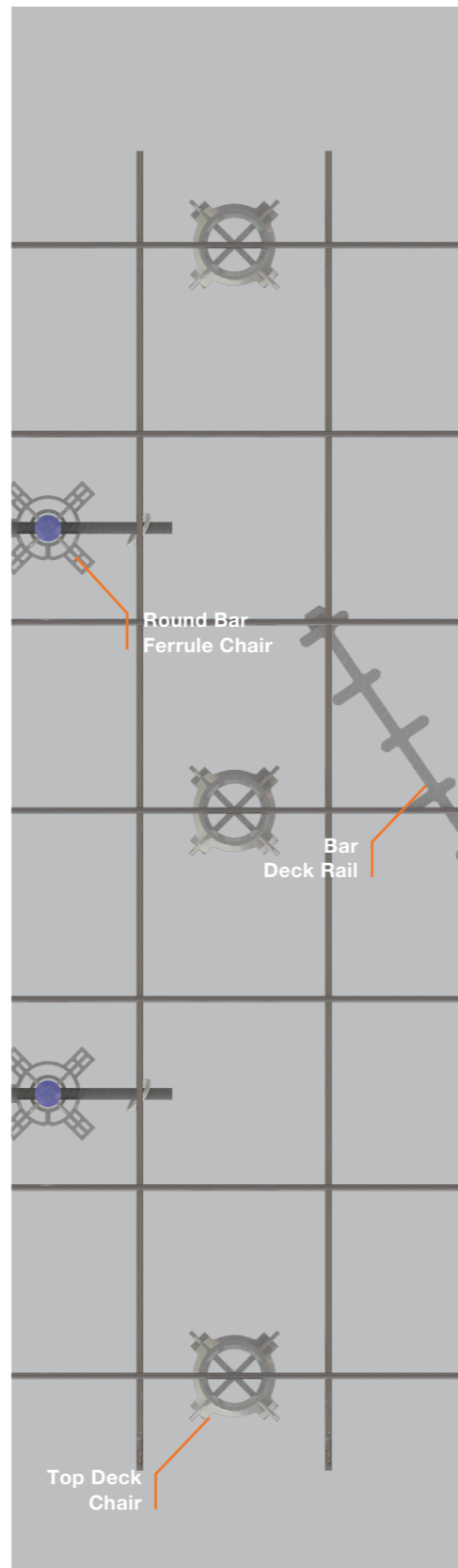


Ramsetreid is firmly focused on providing innovative reinforcing support solutions through our core brands Reid™ and Danley™.

Reid and Danley's comprehensive range of chair and spacer products provide a reinforcing support solution to suit every application.

Plastic Chairs & Spacers Features:

- Proudly Australian Made**
- manufactured in our ISO 9001 Accredited Facility.
- Complies with AS/NZS 2425:2015**
- a mandatory standard that covers minimum durability requirements for chairs and spacers used in concrete construction.
- Locally tested**
- every batch is load tested to AS/NZS 2425:2015 in our production facility in Melbourne.
- Stable and secure**
- reliable positioning and support for steel reinforcement.
- Superior strength**
- durable products designed to withstand heavy loads.
- Engineered for the task**
- suits every application, in a range of heights for a variety of panel thicknesses.

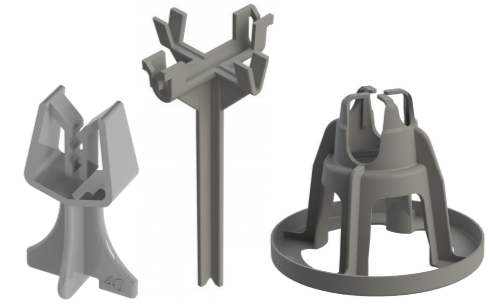


Compliance AS/NZS 2425:2015

What is AS/NZS 2425:2015?

AS/NZS 2425:2015 bar chairs in reinforced concrete - product requirements and test methods is a mandatory standard that covers minimum durability requirements for chairs and spacers used in concrete construction.

All plastic chairs and spacers used in reinforced concrete construction **MUST** comply with the requirements of AS/NZS 2425:2015.



AS/NZS 2425:2015 Compliant



Are you using AS/NZS 2425:2015 compliant bar chairs & spacers? What is at risk?

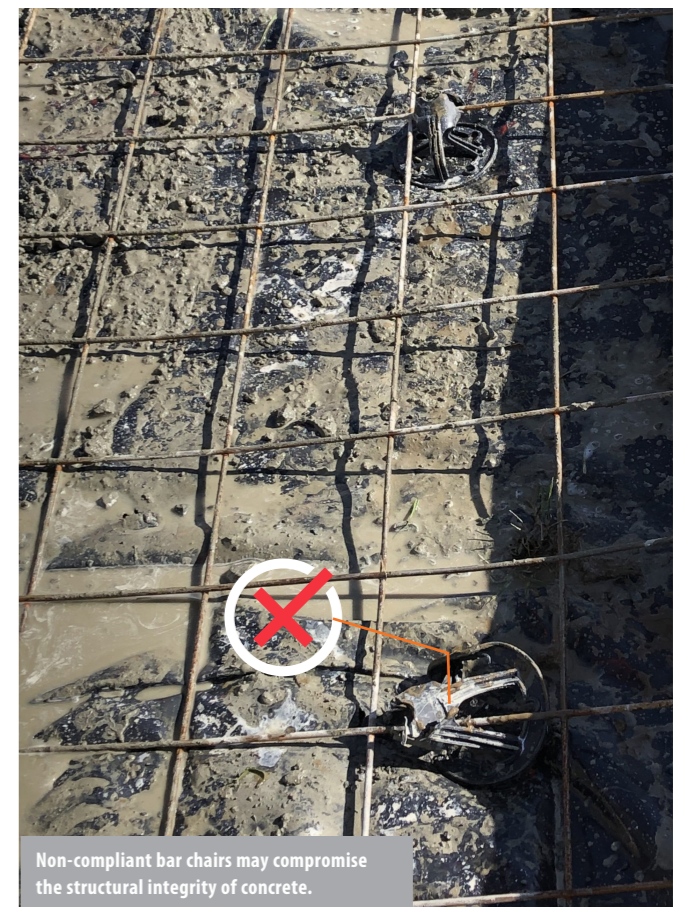
- Unsatisfactory manufacture and application of bar chairs and spacers can lead to the misplacement of steel reinforcement.
- This in turn, may compromise structural strength and reduce the durability of reinforced concrete.
- Asset Owners, Engineers, Suppliers and Building Surveyors are responsible for ensuring that compliant products are manufactured, specified and installed on construction projects.



Australian & New Zealand Standard AS/NZS 2425:2015 is now mandatory. Do your bar chairs and spacers comply?

Table 1: Ramsetreid Product which comply with AS/NZS 2425:2015

Brand	Product
	<ul style="list-style-type: none"> • Mesh Chairs • Fast Clip Bar Chairs • Panel Chairs • Top & Bottom Deck Chairs • Threaded Insert Chairs • Deck Rail
	<ul style="list-style-type: none"> • Combination Bar Chairs • SOG Chairs • PodRail • PodStar Spacer • Trench Mesh Supports • Heavy Duty Clip on Chairs



Non-compliant bar chairs may compromise the structural integrity of concrete.

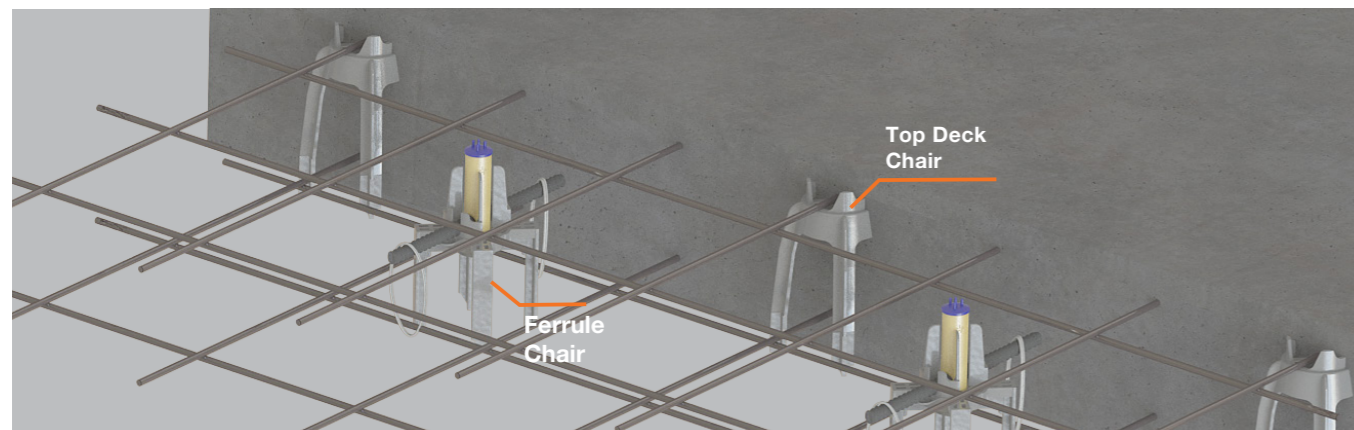
Compliance AS/NZS 2425:2015

How do we comply?

As a trusted and leading supplier of plastic chairs & spacers, ramsetreid complies with the testing requirements of AS/NZS 2425:2015

Table 2: AS/NZS 2425:2015 Compliance Details

Clause	Requirement	Compliant
4.1, Table 1	Test chairs & spacers to strength grade categories of 60kg, 120kg, 200kg and >300kg.	✓
4.1, Table 1	Under pre-load: Chairs <75mm to deflect ±1mm. Chairs ≥75mm to deflect ±2mm.	✓
4.1, Table 1	Deflection under load ±3mm.	✓
4.1, Table 1	After applied load, the final recovered position of the test specimens must be <2.0mm.	✓
6.2	Conduct ongoing batch testing.	✓
6.3	All test results are to be recorded and retained for a minimum duration of 2 years.	✓
6.3 (c)	Pre-load test specimens to 20kg.	✓
6.3 (d)	Apply load to test samples for a minimum duration of 1 minute.	✓



Our Plastic Chairs & Spacers comply with **AS/NZS 2425:2015** ✓

Our Range



reid Plastic Chairs & Spacers range:



Mesh Chair
The mesh chair is designed to clip easily to the intersection of the mesh, providing greater strength and stability. Mesh chairs can be used with extensions for added height if required.



Fast Clip Bar Chairs
Fast Clip Bar Chairs accommodate bar sizes from 4mm to 20mm. Each chair is identified by cover and can be used with extensions for added height and stability if required.



Panel Bar Chairs
Designed to support single layered mesh. The easy push on clip mechanism allows the chair to swing into a vertical position when lowering the mesh into the form and suits all mesh sizes including N12 bars. Dimples located at the base of the legs ensures minimal exposure.



Top Deck Chair
The dual height top deck chair has been designed to support both top mesh and top reinforcing bars in suspended decks, thick tilt-up panels and any tall spacer applications, where strength and stability is critical.



Bar Deck Rail
The Deck Rail is a continuous plastic spacer for formwork applications, with sets of vertical legs at 75mm centres and another central leg in between the sets to provide stability and strength.



Bottom Deck Spacer
Has been designed to support both mesh and large bars in suspended decks, precast beams, panels, and tilt-up applications. As an alternative to wire chairs and concrete spacers, the Bottom Deck Spacers are lightweight, offer dual combination heights and will not rust.

There are more products featured in this catalogue than listed above, please review the full catalogue to view our complete range.

DANLEY Plastic Chairs & Spacers range:



Combination Bar Chairs
Combination Bar Chairs are used to set the reinforcing bar and mesh to the correct position within the concrete cover. Ideal for use in applications including polystyrene pod slabs, slab-on-ground and swimming pools.



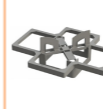
SOG Chairs
The SOG (Slab-On-Ground) Bar Chairs are used to set the reinforcing bar and mesh to the correct position in deep slab residential, commercial and civil applications including roadways.



PodRail™
Provides support for mesh in typical residential foam pod slabs and cannot be matched by any other type of spacer. Its unique flatness gives it the ability to resist sinking into pods and always provides the designed cover to mesh utilising just two PodRails per pod. Fast and easy to install.



Combination SOG Clip-On Bar Chair
The BCSOG5065C Clip-on Bar Chair is also suited for use in foundations, swimming pools and vertical spray-crete applications as the chair stays secured to the mesh and won't slip or dislodge.



PodStar Spacer
The PodStar™ acts as a spacer keeping the foam pods at a designed 110mm spacing forming internal beams of uniformed width. The reinforcing bars can be placed in these beams and are held in a central position by the PodStar™.



Trench Mesh Supports
Trench Mesh Supports are designed to suit typical trench mesh and reinforcement bar sizes used in edge beams. Trench Mesh Supports are stable and provide excellent support to mesh resulting in uniform concrete cover.

There are more products featured in this catalogue than listed above, please review the full catalogue to view our complete range.

Reid™ Plastic Chairs & Spacers

Reid™ Mesh Chairs

The mesh chair is designed to clip easily to the intersection of the mesh, providing greater strength and stability. Mesh chairs can be used with extensions for added height if required.

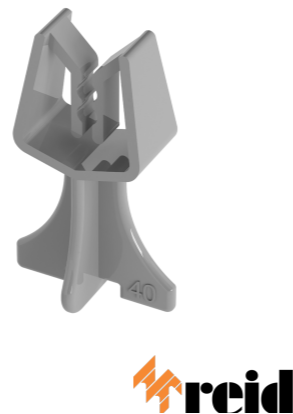
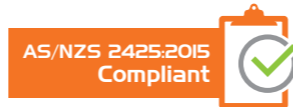
Part	Description	Pack Qty
MESH20	Clip on Mesh Chair 20mm	100
MESH25	Clip on Mesh Chair 25mm	100
MESH30	Clip on Mesh Chair 30mm	100
MESH35	Clip on Mesh Chair 35mm	100
MESH40	Clip on Mesh Chair 40mm	100
MESH50	Clip on Mesh Chair 50mm	100
MESH60	Clip on Mesh Chair 60mm	100
MESH65	Clip on Mesh Chair 65mm	100
MESH75	Clip on Mesh Chair 75mm	100
MESH90	Clip on Mesh Chair 90mm	100



Reid™ Fast Clip Bar Chairs

Fast Clip Bar Chairs accommodate bar sizes from 4mm to 20mm. Each chair is identified by cover and can be used with extensions for added height and stability if required.

Part	Description	Pack Qty
FCB20	Fast Clip Bar Chair 20mm	100
FCB25	Fast Clip Bar Chair 25mm	100
FCB30	Fast Clip Bar Chair 30mm	100
FCB35	Fast Clip Bar Chair 35mm	100
FCB40	Fast Clip Bar Chair 40mm	100
FCB50	Fast Clip Bar Chair 50mm	100
FCB60	Fast Clip Bar Chair 60mm	100
FCB65	Fast Clip Bar Chair 65mm	100
FCB75	Fast Clip Bar Chair 75mm	100



Reid™ Panel Bar Chairs

Designed to support single layered mesh. The easy push on clip mechanism allows the chair to swing into a vertical position when lowering the mesh into the form and suits all mesh sizes including N12 bars. Dimples located at the base of the legs ensures minimum exposure.

Part	Description	Pack Qty
BCPANEL3040	Bar Chair Panel 30/40mm	100
BCPANEL5060	Bar Chair Panel 50/60mm	100
BCPANEL6575	Bar Chair Panel 65/75mm	100
BCPANEL90100	Bar Chair Panel 90/100mm	100



Reid™ Top Deck Chairs

The Top Deck Chair supports both top mesh and top reinforcing bars in suspended decks, thick precast elements and tilt-up panels where stability is critical. Unlike wire alternatives, the Top Deck Chair offers a combination of heights, will not rust, will not spread under normal construction loads and can still be handled in extreme heat. Top Deck Chair features a cross bar between the dual supports which provides for the wire-tying of reo, if required.

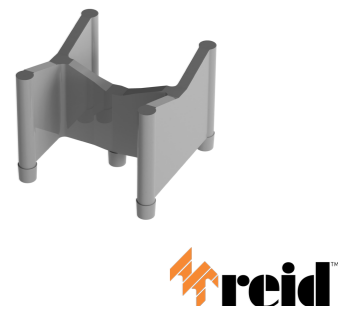
Part	Description	Pack Qty
BPDST6575	Top Deck Chair 65/75mm	50
BPDST090100	Top Deck Chair 90/100mm	50
BPDST110120	Top Deck Chair 110/120mm	50
BPDST130140	Top Deck Chair 130/140mm	50
BPDST150160	Top Deck Chair 150/160mm	50
BPDST170180	Top Deck Chair 170/180mm	50
BPDST190200	Top Deck Chair 190/200mm	50
BCBASE130	Deck Chair Base 130mm Diameter	100



Reid™ Bottom Deck Spacers

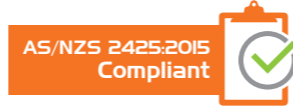
The Bottom Deck Spacer has been designed to support both mesh and large bars in suspended decks, precast beams, panels, and tilt-up applications. As an alternative to wire chairs and concrete spacers, the Bottom Deck Spacers are lightweight, offer dual/combination heights and will not rust. Strong and stable, the spacers have 5 small dimples that provide minimum visibility or exposure. The dimples also allow for tie wire to be placed under the spacer for fixing reo, if required. The cradle accommodates a wide range of bar diameters and saves steel-fixing time in horizontal applications. Easy placement of bar on the cradle reduces fatigue during installation.

Part	Description	Pack Qty
BPDS2530	Bottom Deck Spacer 25&30mm	100
BPDS3540	Bottom Deck Spacer 35&40mm	100
BPDS4550	Bottom Deck Spacer 45&50mm	100



ReidBar™ Threaded Insert Chair

Designed to enable ReidBar inserts to be easily used for near face applications in precast elements. Used in conjunction with the appropriate nail plate, the Threaded Insert Chair is fully adjustable to suit 125, 150, 175, and 200mm panel thicknesses and can be trimmed for intermediate thicknesses.



Part	Description	Pack Qty
TICHAIR	Threaded Insert Chair	90

NOTE:
 1: The chair will take all inserts from RB12 to RBA20.
 2: Use appropriate size nail plate to attach insert into chair.
 3: Can be used for all metric and coil thread inserts with appropriate nailing plate.

Reid™ Deck Rail

The Reid™ Deck Rail is a continuous plastic spacer for formwork applications. In addition to the sets of vertical legs at 75mm centres, centrally positioned support legs provide the Deck Rail with the stability and strength required on construction sites.

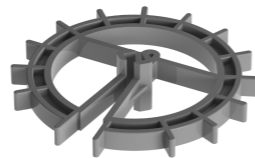


Part	Description	Pack Qty
BDR025	Deck Rail 25mm High	25
BDR030	Deck Rail 30mm High	25
BDR035	Deck Rail 35mm High	25
BDR040	Deck Rail 40mm High	25
BDR045	Deck Rail 45mm High	25
BDR050	Deck Rail 50mm High	25
BDR065	Deck Rail 65mm High	25
BDR075	Deck Rail 75mm High	25
BDR100	Deck Rail 100mm High	25
BDRBASE	Deck Rail Base 740mm x 90mm	50

Reid™ Circular Spacers

The unique design offers accurate cover for 360 degrees. It will not twist when in position due to the in-built sleeves which adjust to hold the bar firmly. As the size of the bar increases the cover remains the same.

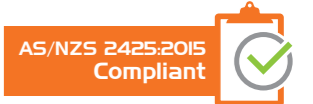
Part	Description	Pack Qty
CA20CR6	Circular Spacer 20mm (3-6mm wire)	100
CB15CR12	Circular Spacer 15mm (8-12mm wire)	100
CB20CR12	Circular Spacer 20mm (8-12mm wire)	100
CB25CR12	Circular Spacer 25mm (8-12mm wire)	100
CB30CR12	Circular Spacer 30mm (8-12mm wire)	100
CB40CR12	Circular Spacer 40mm (8-12mm wire)	100
CB50CR12	Circular Spacer 50mm (8-12mm wire)	100
CB65CR12	Circular Spacer 65mm (8-12mm wire)	100
CB75CR12	Circular Spacer 75mm (8-12mm wire)	100
CC30CR20	Circular Spacer 30mm (16-20mm Bar)	100



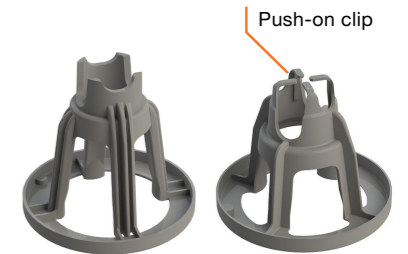
Danley™ Plastic Chairs & Spacers

Danley™ Combination Chairs

Combination Bar Chairs are used to set the reinforcing bar and mesh to the correct position within the concrete cover. The easy to use, push-on clip mechanism allows the bar chair to swing into a vertical position as the mesh is being positioned or moved on site.

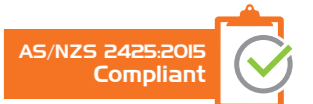


Part	Description	Pack Qty
BC2540	Combination Bar Chair 25/40mm	100
BC5065	Combination Bar Chair 50/65mm	100
BC5065C	Combination Bar Chair 50/65mm	100
BC7590	Combination Bar Chair 75/90mm	100
BC85100	Combination Bar Chair 85/100mm	100



Danley™ Tall Combination Chairs

Tall Combination Bar Chairs are used to set the reinforcing bar and mesh to the correct position within the concrete cover for heavy duty, slab-on-ground applications.



Part	Description	Pack Qty
BC105110	Tall Combination Bar Chair 105/110	100
BC115120	Tall Combination Bar Chair 115/120	100
BC125130	Tall Combination Bar Chair 125/130	100
BC135140	Tall Combination Bar Chair 135/140	100
BC145150	Tall Combination Bar Chair 145/150	100
BC155160	Tall Combination Bar Chair 155/160	100
BC165170	Tall Combination Bar Chair 165/170	50



Danley™ SOG Bar Chairs

The Danley™ SOG (Slab-On-Ground) Bar Chairs are used to set the reinforcing bar and mesh to the correct position in deeper slabs cast for residential, commercial and civil slab-on-ground applications.



Part	Description	Pack Qty
BSOG100C	SOG Chair 100mm Clip-On	100
BSOG110C	SOG Chair 110mm Clip-On	100
BSOG110DC	SOG Chair 110mm Double Clip-On	100
BSOG120C	SOG Chair 120mm Clip-On	100
BSOG127DC	SOG Chair 127mm Double Clip-On	100
BSOG130C	SOG Chair 130mm Clip-On	100
BSOG140C	SOG Chair 140mm Clip-On	100
BSOG150C	SOG Chair 150mm Clip-On	100

Danley™ Combination SOG Clip-On Bar Chair

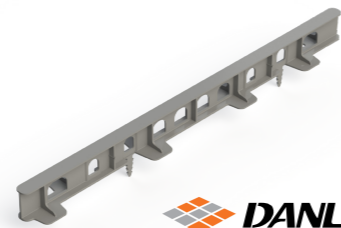
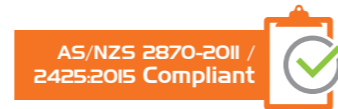
The Danley™ SOG (Slab-On-Ground) Clip-On Bar Chairs are used to set the reinforcing bar and mesh to the correct position in deeper slabs cast for residential, commercial and civil slab-on-ground applications.



Part	Description	Pack Qty
BCSOG5065C	Bar Chair SOG Clip-On 50/64	100

Danley™ PodRail™

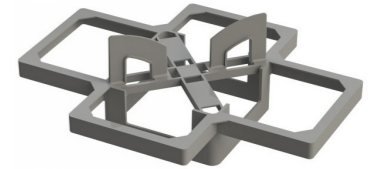
The Danley™ PodRail™ provides support for mesh in typical residential foam pod slabs. Its unique flatness & rigidity gives it the ability to resist sinking into pods. Using just 2 PodRails per pod, the Podrail is fast and easy to install, saving time and reducing fatigue during set up.



Part	Description	Pack Qty
BPODR40S	Pod Rail 40mm with spikes	20

Danley™ PodStar™ Spacer

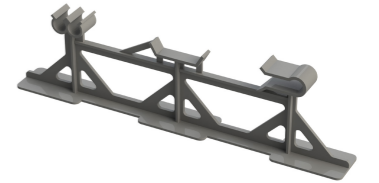
The PodStar™ acts as a spacer keeping the foam pods at a designed 110mm spacing forming internal beams of uniformed width.



Part	Description	Pack Qty
BPODEX105	Pod Star Extension	100

Danley™ Trench Mesh Supports

Danley™ Trench Mesh Supports are designed to suit typical trench mesh and reinforcement bar sizes used in edge beams.



Part	Description	Pack Qty
BCTMSEB300	Trench Mesh Support Edge Beam Spacer 300mm	25
BCTMS016	Trench Mesh Supports for 16mm Bar	25
BCTMSEB300	Trench Mesh Support Edge Beam Spacer 300mm	25

Danley™ BarGuard™

The Danley™ BarGuard™ reduces the chance of cuts and abrasions from exposed reinforcing bars up to 36mm in diameter. They are also able to fit over star pickets and most stakes on safety barriers.



Part	Description	Pack Qty
BARGY100	Bar Guard Safety Cap Yellow (100)	100

Notes



Customer Service

Reid™ New Zealand

Tel: 0800 88 22 12

Email: sales@ramsetreid.co.nz

Web: www.reids.co.nz

Reid™ Australia

Customer Service Centre

Tel: 1300 780 250

Email: sales@reidanz.com

Web: reid.com.au

Reid™ Construction Systems (RCS)

AUS: 1 Ramset Drive, Chirnside Park, Victoria, Australia, 3116

NZ: 23-29 Poland Road, Glenfield, Auckland 0632

© Copyright June 2022. ITW Australia Pty. Ltd. ABN 63 004 235 063 trading as RCS.

In the interests of product improvement, RCS reserves the right to alter product specifications as required. Information included in this product catalogue is correct at time of printing. For further technical information go to www.reidconstructionssystem.com or contact RCS on the numbers indicated above.

Important Disclaimer: Any technical opinions, advice or data (together, the "Information") provided by RCS (a division of ITW Australia Pty Ltd) ("ITW") in this document is provided in good faith and to the best of ITW's knowledge, ITW makes no representation as to the accuracy or authenticity of the Information and reliance on any Information provided is entirely at the recipient's own risk. It is the responsibility of the recipient take all necessary precautions in verifying the accuracy of the Information and in assessing whether the Information is appropriate for its own requirements, including seeking its own independent engineering (or other) advice on the Information as appropriate. To the extent permitted by law, ITW will not be liable to the recipient or any third party for any direct or indirect loss or liability arising out of, or in connection with, the Information whether arising in contract, tort, under any statute or otherwise. This disclaimer also applies to Information provided by the employees, contractors or agents of ITW whether or not they are acting in their capacity as employees, contractors or agents of ITW.

