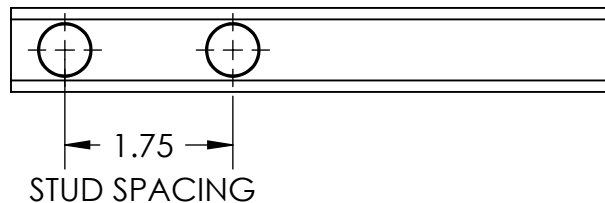
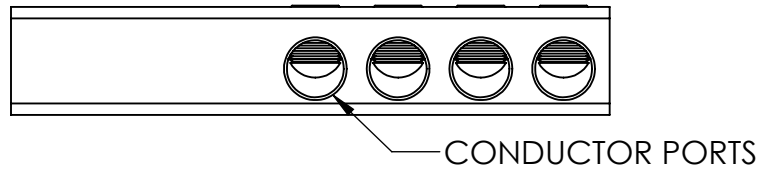
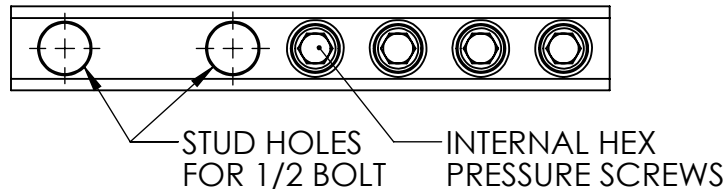
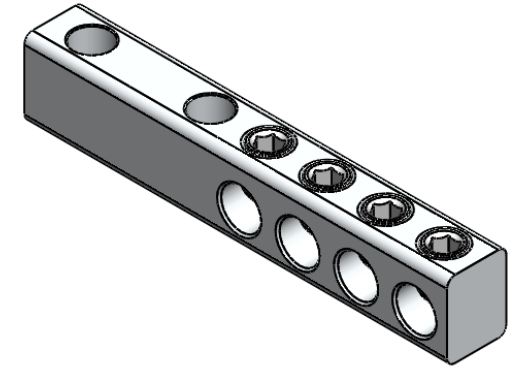


PART	# OF CONDUCTORS	WIRE RANGE	HEX SIZE	L	H	W
STL250-4	4	250KCMIL - 6 AWG	5/16	6.24	1.125	.875
STL250-6	6	250KCMIL - 6 AWG	5/16	7.96	1.125	.875
STL250-8	8	250KCMIL - 6 AWG	5/16	9.68	1.125	.875
STL350-4	4	350KCMIL - 6 AWG	5/16	6.96	1.44	1.00
STL350-6	6	350KCMIL - 6 AWG	5/16	9.06	1.44	1.00
STL350-8	8	350KCMIL - 6 AWG	5/16	11.16	1.44	1.00
STL500-4	4	500KCMIL - 4 AWG	5/16	7.50	1.63	1.13
STL500-6	6	500KCMIL - 4 AWG	5/16	9.74	1.63	1.13
STL500-8	8	500KCMIL - 4 AWG	5/16	12.03	1.63	1.13
STL750-4	4	750 - 250KCMIL	3/8	8.57	2.00	1.44
STL750-6	6	750 - 250KCMIL	3/8	11.42	2.00	1.44
STL750-8	8	750 - 250KCMIL	3/8	14.28	2.00	1.44



- NOTE:
1. TIN PLATED 6061-T6511 ALUMINUM ALLOY.
 2. TWO MOUNTING HOLES ENSURE SECURE CONNECTION.
 3. RATED 600 VOLTS.

CONTACT NSI FOR SALES @ 800.321.5847

		POLARIS SALES CO. INC	
PROPRIETARY AND CONFIDENTIAL		11625 PROSPEROUS DRIVE ODESSA, FL 33556	
THE INFORMATION CONTAINED IN THIS DRAWING IS THE SOLE PROPERTY OF POLARIS SALES CO. INC. ANY REPRODUCTION IN PART OR AS A WHOLE WITHOUT THE WRITTEN PERMISSION OF POLARIS SALES CO. INC. IS PROHIBITED.		TITLE: TRANSFORMER LUGS STL SERIES	
NAME S.PARRY		DATE 9/25/2012	
DWG. NO. STL_-		SCALE: 1:1	
MATERIAL: 6061-T6511 ALUMINUM		SHEET: 1 OF 1	