

4

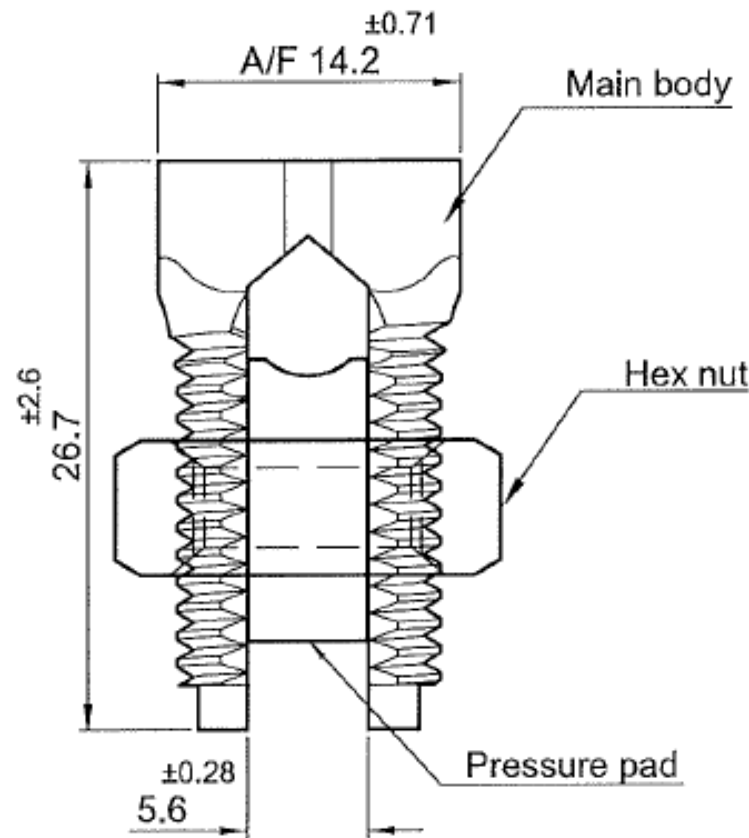
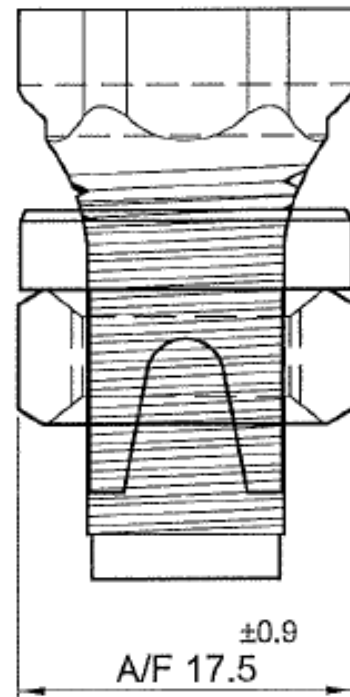
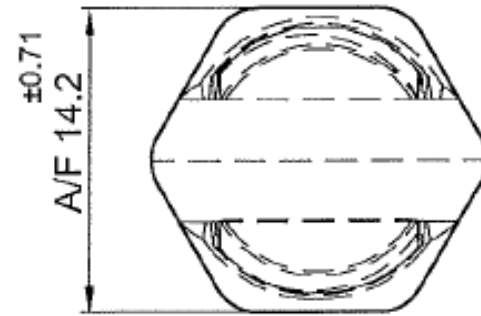
3

2

1

REV	DATE	REVISION	BY	ECN	C'K'D
A	04/29/2021	NEW RELEASE	GW		DR

Stamping Details



- NOTES:
1. RECOMMENDED TORQUE: 165 IN-LBF (18.6 N-M)
 2. WIRE RANGE OF EQUAL MAIN AND TAP (MIN 8 SOL/STR), (MAX 4 STR) AND MIN TAP WITH ONE MAX MAIN (16 SOL/STR)
 3. ALL TRANSITIONS MUST BE SMOOTH WITH NO SHARP EDGES

PROPRIETARY AND CONFIDENTIAL		NAME	DATE		
<small>THE INFORMATION CONTAINED IN THIS DRAWING IS THE SOLE PROPERTY OF NSI Industries. ANY REPRODUCTION IN PART OR AS A WHOLE WITHOUT THE WRITTEN PERMISSION OF NSI Industries IS PROHIBITED.</small> <small>DIM. UNLESS OTHERWISE NOTED, ARE IN INCHES. DECIMAL .XX ± .015 DECIMAL .XXX ± .005 FRACTION ± 1/64 ANGLES ± 1 DEG DO NOT SCALE DRAWINGS</small>		DRAWN	GW		04/21
		CHECKED	DR		04/21
		ENG APPR.	SSM		04/21
		MFG APPR.			
		Q.A.			
MATERIAL ETP COPPER FINISH NATURAL DIMENSIONS ARE IN MM		COMMENTS: TO ORDER NSI PRODUCTS CALL UNITED STATES (704) 439-2420 FOR PRODUCT INFO: www.nsiindustries.com		TITLE: SPLIT BOLT	
SIZE B	DWG. NO.	MODEL. NO. N-4	REV A		
SCALE: 1:1		SW 2019	SHEET 1 OF 1		

4

3

2

1